

Datasheet for ABIN2854843

anti-MMP12 antibody**3** Images[Go to Product page](#)

Overview

Quantity:	100 µL
Target:	MMP12
Reactivity:	Human
Host:	Rabbit
Clonality:	Polyclonal
Conjugate:	This MMP12 antibody is un-conjugated
Application:	Western Blotting (WB), Immunocytochemistry (ICC), Immunohistochemistry (Paraffin-embedded Sections) (IHC (p)), Immunofluorescence (IF)

Product Details

Immunogen:	Carrier-protein conjugated synthetic peptide encompassing a sequence within the center region of human MMP12. The exact sequence is proprietary.
Isotype:	IgG
Cross-Reactivity:	Human, Rat
Characteristics:	Rabbit Polyclonal antibody to MMP12 (matrix metalloproteinase 12 (macrophage elastase)) MMP12 antibody [N3C1], Internal
Purification:	Purified by antigen-affinity chromatography.

Target Details

Target:	MMP12
Alternative Name:	matrix metalloproteinase 12 (MMP12 Products)

Target Details

Background: Proteins of the matrix metalloproteinase (MMP) family are involved in the breakdown of extracellular matrix in normal physiological processes, such as embryonic development, reproduction, and tissue remodeling, as well as in disease processes, such as arthritis and metastasis. Most MMP's are secreted as inactive proproteins which are activated when cleaved by extracellular proteinases. It is thought that the protein encoded by this gene is cleaved at both ends to yield the active enzyme, but this processing has not been fully described. The enzyme degrades soluble and insoluble elastin. It may play a role in aneurysm formation and studies in mice suggest a role in the development of emphysema. The gene is part of a cluster of MMP genes which localize to chromosome 11q22.3.

Cellular Localization: Secreted , extracellular space , extracellular matrix

Molecular Weight: 54 kDa

Gene ID: 4321

UniProt: [P39900](#)

Application Details

Application Notes: WB: 1:500-1:3000. ICC/IF: 1:100-1:1000. IHC-P: 1:100-1:1000. Optimal dilutions/concentrations should be determined by the researcher. Not tested in other applications.

Comment: Validation: Orthogonal

Restrictions: For Research Use only

Handling

Format: Liquid

Concentration: 1 mg/mL

Buffer: 0.1M Tris-Glycine (pH 7), 10 % Glycerol, 0.01 % Thimerosal

Preservative: Thimerosal (Merthiolate)

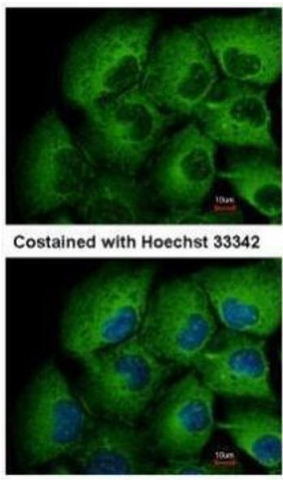
Precaution of Use: This product contains Thimerosal (Merthiolate): a POISONOUS AND HAZARDOUS SUBSTANCE which should be handled by trained staff only.

Storage: 4 °C,-20 °C

Storage Comment: Store as concentrated solution. Centrifuge briefly prior to opening vial. For short-term storage (1-2 weeks), store at 4°C. For long-term storage, aliquot and store at -20°C or below. Avoid

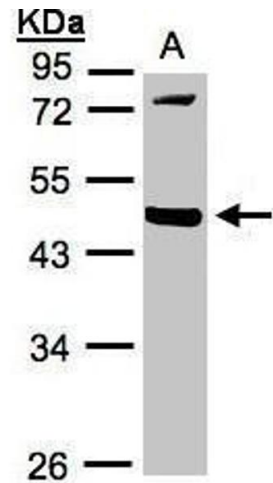
multiple freeze-thaw cycles.

Images



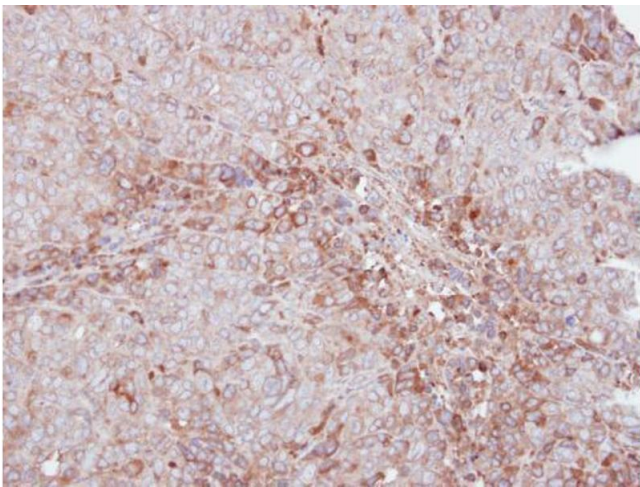
Immunofluorescence

Image 1. ICC/IF Image Immunofluorescence analysis of methanol-fixed H1299, using MMP12, antibody at 1:500 dilution.



Western Blotting

Image 2. WB Image Sample(30 ug whole cell lysate) A:293T 10% SDS PAGE antibody diluted at 1:1000



Immunohistochemistry

Image 3. IHC-P Image Immunohistochemical analysis of paraffin-embedded DLD1 xenograft, using MMP12, antibody at 1:500 dilution.