

Datasheet for ABIN2854848  
**anti-EGFR antibody (N-Term)**



[Go to Product page](#)

5 Images

## Overview

Quantity:	100 µL
Target:	EGFR
Binding Specificity:	N-Term
Reactivity:	Human
Host:	Rabbit
Clonality:	Polyclonal
Conjugate:	This EGFR antibody is un-conjugated
Application:	Western Blotting (WB), Immunohistochemistry (Paraffin-embedded Sections) (IHC (p))

## Product Details

Immunogen:	Carrier-protein conjugated synthetic peptide encompassing a sequence within the N-terminus region of human EGFR. The exact sequence is proprietary.
Isotype:	IgG
Cross-Reactivity:	Human
Characteristics:	Rabbit Polyclonal antibody to EGFR (epidermal growth factor receptor (erythroblastic leukemia viral (v-erb-b) oncogene homolog, avian)) EGFR antibody [N1], N-term
Purification:	Purified by antigen-affinity chromatography.
Grade:	KO Validated

### Target Details

Target:	EGFR
Alternative Name:	epidermal growth factor receptor ( <a href="#">EGFR Products</a> )
Background:	<p>The protein encoded by this gene is a transmembrane glycoprotein that is a member of the protein kinase superfamily. This protein is a receptor for members of the epidermal growth factor family. EGFR is a cell surface protein that binds to epidermal growth factor. Binding of the protein to a ligand induces receptor dimerization and tyrosine autophosphorylation and leads to cell proliferation. Mutations in this gene are associated with lung cancer.</p> <p>Cellular Localization: Cell membrane, Single-pass type I membrane protein , Isoform 2: Secreted</p>
Molecular Weight:	134 kDa
Gene ID:	1956
UniProt:	<a href="#">P00533</a>
Pathways:	<a href="#">NF-kappaB Signaling</a> , <a href="#">RTK Signaling</a> , <a href="#">Fc-epsilon Receptor Signaling Pathway</a> , <a href="#">EGFR Signaling Pathway</a> , <a href="#">Neurotrophin Signaling Pathway</a> , <a href="#">Stem Cell Maintenance</a> , <a href="#">Hepatitis C</a> , <a href="#">Positive Regulation of Response to DNA Damage Stimulus</a> , <a href="#">Interaction of EGFR with phospholipase C-gamma</a> , <a href="#">Thromboxane A2 Receptor Signaling</a> , <a href="#">EGFR Downregulation</a> , <a href="#">S100 Proteins</a>

### Application Details

Application Notes:	WB: 1:500-1:3000. IHC-P: 1:100-1:1000. Optimal dilutions/concentrations should be determined by the researcher. Not tested in other applications.
Comment:	Positive Control: A431 , A549 , H1299 , HCT116 Validation: KO/KD, Orthogonal
Restrictions:	For Research Use only

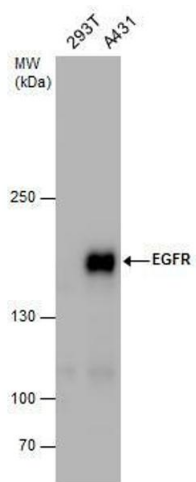
### Handling

Format:	Liquid
Concentration:	1 mg/mL
Buffer:	0.1M Tris-Glycine ( pH 7), 10 % Glycerol, 0.01 % Thimerosal
Preservative:	Thimerosal (Merthiolate)
Precaution of Use:	This product contains Thimerosal (Merthiolate): a POISONOUS AND HAZARDOUS SUBSTANCE which should be handled by trained staff only.

Handling

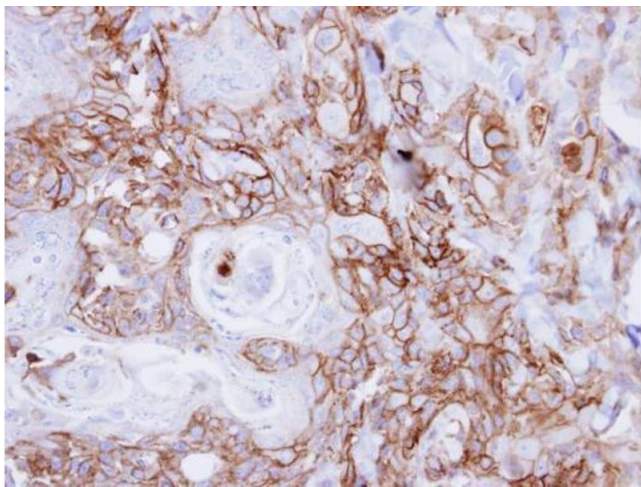
Storage:	4 °C,-20 °C
Storage Comment:	Store as concentrated solution. Centrifuge briefly prior to opening vial. For short-term storage (1-2 weeks), store at 4°C. For long-term storage, aliquot and store at -20°C or below. Avoid multiple freeze-thaw cycles.

Images



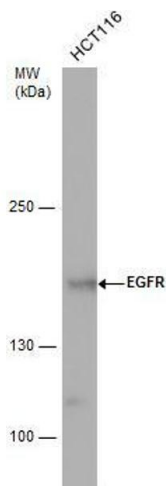
Western Blotting

**Image 1.** WB Image EGFR antibody detects EGFR protein by western blot analysis. Whole cell extracts (30 µg) was separated by 5% SDS-PAGE, and the membrane was blotted with EGFR antibody , at a dilution of 1:1000.



Immunohistochemistry

**Image 2.** IHC-P Image Immunohistochemical analysis of paraffin-embedded CA922 xenograft, using EGFR, antibody at 1:500 dilution.



Western Blotting

**Image 3.** WB Image EGFR antibody detects EGFR protein by western blot analysis. Whole cell extracts (30 µg) was separated by 5% SDS-PAGE, and the membrane was blotted with EGFR antibody , diluted by 1:1000.

## Images

---

Please check the [product details page](#) for more images. Overall 5 images are available for ABIN2854848.