

Datasheet for ABIN2854855
anti-SYK antibody (Internal Region)



[Go to Product page](#)

9 Images

Overview

Quantity:	100 µL
Target:	SYK
Binding Specificity:	Internal Region
Reactivity:	Human, Mouse, Rat
Host:	Rabbit
Clonality:	Polyclonal
Conjugate:	This SYK antibody is un-conjugated
Application:	Western Blotting (WB), Immunofluorescence (IF), Immunohistochemistry (Paraffin-embedded Sections) (IHC (p)), Immunoprecipitation (IP), Immunocytochemistry (ICC)

Product Details

Immunogen:	Recombinant protein encompassing a sequence within the center region of human SYK. The exact sequence is proprietary.
Isotype:	IgG
Cross-Reactivity:	Cow (Bovine)
Cross-Reactivity (Details):	Bovine (80 %)
Characteristics:	Rabbit Polyclonal antibody to SYK (spleen tyrosine kinase) SYK antibody [N2C2], Internal
Purification:	Purified by antigen-affinity chromatography.

Target Details

Target:	SYK
Alternative Name:	SYK (SYK Products)
Background:	<p>This gene encodes a member of the family of non-receptor type Tyr protein kinases. This protein is widely expressed in hematopoietic cells and is involved in coupling activated immunoreceptors to downstream signaling events that mediate diverse cellular responses, including proliferation, differentiation, and phagocytosis. It is thought to be a modulator of epithelial cell growth and a potential tumour suppressor in human breast carcinomas.</p> <p>Alternatively spliced transcript variants encoding different isoforms have been found for this gene.</p>
Molecular Weight:	72 kDa
Gene ID:	6850
Pathways:	Fc-epsilon Receptor Signaling Pathway , Regulation of Leukocyte Mediated Immunity , Positive Regulation of Immune Effector Process , Thromboxane A2 Receptor Signaling , BCR Signaling

Application Details

Application Notes:	<p>Suggested dilution Reference ICC/IF 1:100-1:1000* IHC (Formalin-fixed paraffin-embedded sections) 1:100-1:1000* Immunoprecipitation 1:100-1:500* Western blot 1:500-1:3000* Not tested in other applications. *Optimal dilutions/concentrations should be determined by the researcher.Suggested dilutionReferenceICC/IF1:100-1:1000* IHC (Formalin-fixed paraffin-embedded sections)1:100-1:1000* Immunoprecipitation1:100-1:500* Western blot1:500-1:3000*</p>
Comment:	Positive Control: A431 , Raji , BMDM , mouse spleen
Restrictions:	For Research Use only

Handling

Format:	Liquid
Concentration:	0.85 mg/mL
Buffer:	1XPBS, 20 % Glycerol (pH 7). 0.025 % ProClin 300 was added as a preservative.
Preservative:	ProClin
Precaution of Use:	This product contains ProClin: a POISONOUS AND HAZARDOUS SUBSTANCE which should be

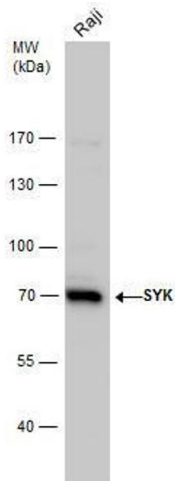
Handling

handled by trained staff only.

Storage: -20 °C

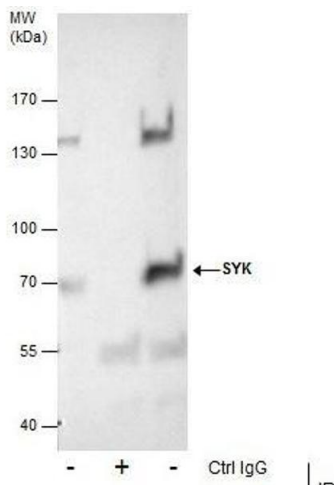
Storage Comment: Keep as concentrated solution. Aliquot and store at -20°C or below. Avoid multiple freeze-thaw cycles.

Images



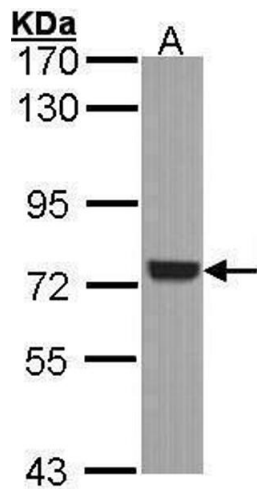
Western Blotting

Image 1. WB Image SYK antibody detects SYK protein by western blot analysis. Whole cell extracts (30 µg) was separated by 7.5% SDS-PAGE, and the membrane was blotted with SYK antibody, diluted by 1:2000.



Immunoprecipitation

Image 2. IP Image Immunoprecipitation of SYK protein from A431 whole cell extracts using 5 µg of SYK antibody [N2C2], Western blot analysis was performed using SYK antibody [N2C2], EasyBlot anti-Rabbit IgG was used as a secondary reagent.



Western Blotting

Image 3. WB Image Sample (30 ug of whole cell lysate) A:
A431 , 7.5% SDS PAGE antibody diluted at 1:1000

Please check the [product details page](#) for more images. Overall 9 images are available for ABIN2854855.