

Datasheet for ABIN2854856
anti-RRM1 antibody (Center)

5 Images

[Go to Product page](#)

Overview

Quantity:	100 µL
Target:	RRM1
Binding Specificity:	Center
Reactivity:	Human
Host:	Rabbit
Clonality:	Polyclonal
Conjugate:	This RRM1 antibody is un-conjugated
Application:	Western Blotting (WB), Immunofluorescence (IF), Immunohistochemistry (Paraffin-embedded Sections) (IHC (p)), Immunocytochemistry (ICC)

Product Details

Immunogen:	Recombinant protein encompassing a sequence within the center region of human RRM1. The exact sequence is proprietary.
Isotype:	IgG
Cross-Reactivity:	Human, Mouse
Characteristics:	Rabbit Polyclonal antibody to RRM1 (ribonucleotide reductase M1) RRM1 antibody
Purification:	Purified by antigen-affinity chromatography.

Target Details

Target:	RRM1
---------	------

Target Details

Alternative Name:	ribonucleotide reductase M1 (RRM1 Products)
Background:	<p>This gene encodes one of two non-identical subunits that constitute ribonucleoside-diphosphate reductase, an enzyme essential for the production of deoxyribonucleotides prior to DNA synthesis in S phase of dividing cells. It is one of several genes located in the imprinted gene domain of 11p15.5, an important tumor-suppressor gene region. Alterations in this region have been associated with the Beckwith-Wiedemann syndrome, Wilms tumor, rhabdomyosarcoma, adrenocortical carcinoma, and lung, ovarian, and breast cancer. This gene may play a role in malignancies and disease that involve this region.</p> <p>Cellular Localization: Cytoplasm</p>
Molecular Weight:	90 kDa
Gene ID:	6240
UniProt:	P23921
Pathways:	Positive Regulation of Endopeptidase Activity

Application Details

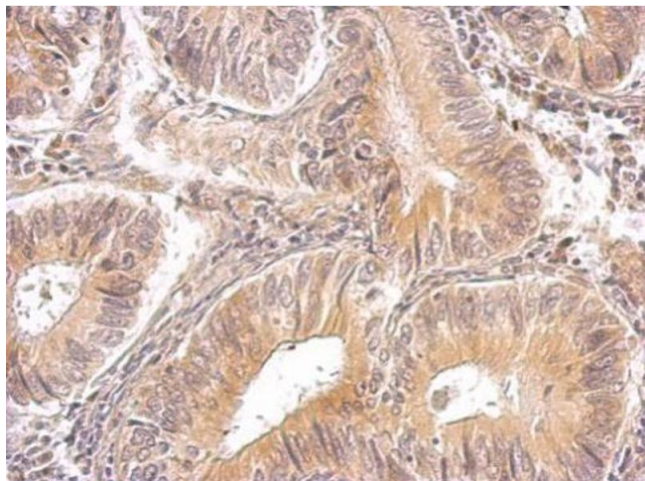
Application Notes:	WB: 1:500-1:3000. ICC/IF: 1:100-1:1000. IHC-P: 1:100-1:1000. Optimal dilutions/concentrations should be determined by the researcher. Not tested in other applications.
Comment:	Positive Control: NIH-3T3 , Raw264.7 , C2C12
Restrictions:	For Research Use only

Handling

Format:	Liquid
Concentration:	0.49 mg/mL
Buffer:	1XPBS (pH 7), 20 % Glycerol, 0.025 % ProClin 300
Preservative:	ProClin
Precaution of Use:	This product contains ProClin: a POISONOUS AND HAZARDOUS SUBSTANCE which should be handled by trained staff only.
Storage:	4 °C,-20 °C
Storage Comment:	Store as concentrated solution. Centrifuge briefly prior to opening vial. For short-term storage

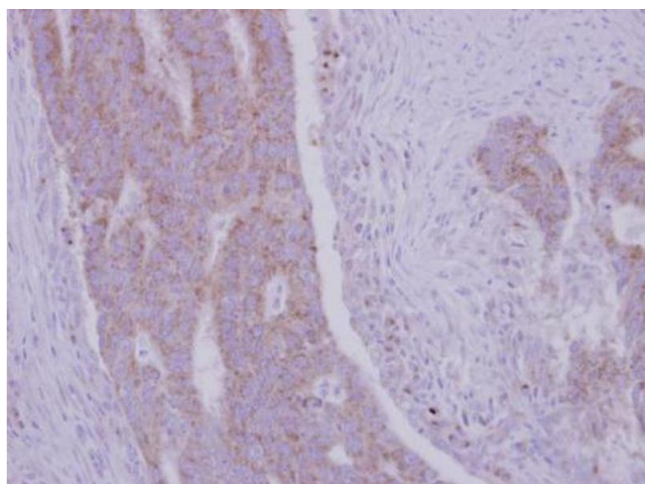
(1-2 weeks), store at 4°C. For long-term storage, aliquot and store at -20°C or below. Avoid multiple freeze-thaw cycles.

Images



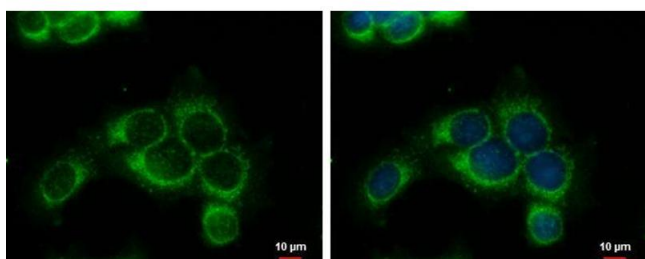
Immunohistochemistry

Image 1. IHC-P Image RRM1 antibody detects RRM1 protein on human gastric cancer by immunohistochemical analysis. Sample: Paraffin-embedded gastric cancer. RRM1 antibody, dilution: 1:500.



Immunohistochemistry

Image 2. IHC-P Image Immunohistochemical analysis of paraffin-embedded human colon carcinoma, using RRM1, antibody at 1:500 dilution.



Immunofluorescence

Image 3. ICC/IF Image RRM1 antibody detects RRM1 protein at cytoplasm by immunofluorescent analysis. Sample: MCF-7 cells were fixed in ice-cold MeOH for 5 min. Green: RRM1 protein stained by RRM1 antibody, diluted at 1:1000. Blue: Hoechst 33342 staining.

Please check the [product details page](#) for more images. Overall 5 images are available for ABIN2854856.