

Datasheet for ABIN2854858
anti-RAC1 antibody (Center)

5 Images

2 Publications

[Go to Product page](#)

Overview

| | |
|----------------------|--|
| Quantity: | 100 µL |
| Target: | RAC1 |
| Binding Specificity: | Center |
| Reactivity: | Human, Mouse |
| Host: | Rabbit |
| Clonality: | Polyclonal |
| Conjugate: | This RAC1 antibody is un-conjugated |
| Application: | Western Blotting (WB), Immunohistochemistry (Paraffin-embedded Sections) (IHC (p)) |

Product Details

| | |
|-----------------------------|---|
| Immunogen: | Recombinant protein encompassing a sequence within the center region of human RAC1. The exact sequence is proprietary. |
| Isotype: | IgG |
| Cross-Reactivity: | Chicken, Dog (Canine), Pig (Porcine), Rat (Rattus), Xenopus laevis, Cow (Bovine), Xenopus tropicalis |
| Cross-Reactivity (Details): | Chicken (90 %), Dog (90 %), Pig (90 %), Rat (90 %), Xenopus laevis (90 %), Bovine (90 %), Xenopus tropicalis (90 %) |
| Characteristics: | Rabbit Polyclonal antibody to RAC1 (ras-related C3 botulinum toxin substrate 1 (rho family, small GTP binding protein Rac1)) RAC1 antibody |
| Purification: | Purified by antigen-affinity chromatography. |

Target Details

| | |
|-------------------|--|
| Target: | RAC1 |
| Abstract: | RAC1 Products |
| Background: | <p>The protein encoded by this gene is a GTPase which belongs to the RAS superfamily of small GTP-binding proteins. Members of this superfamily appear to regulate a diverse array of cellular events, including the control of cell growth, cytoskeletal reorganization, and the activation of protein kinases. Two transcript variants encoding different isoforms have been found for this gene.</p> <p>Cellular Localization: Cell membrane, Lipid-anchor, Cytoplasmic side (By similarity) , Melanosome</p> |
| Molecular Weight: | 21 kDa |
| Gene ID: | 5879 |
| Pathways: | WNT Signaling , Regulation of Actin Filament Polymerization , Cell-Cell Junction Organization , Thromboxane A2 Receptor Signaling , VEGF Signaling |

Application Details

| | |
|--------------------|--|
| Application Notes: | Suggested dilution Reference IHC (Formalin-fixed paraffin-embedded sections) 1:100-1:1000* Western blot 1:500-1:3000* Not tested in other applications. *Optimal dilutions/concentrations should be determined by the researcher.Suggested dilutionReferenceIHC (Formalin-fixed paraffin-embedded sections)1:100-1:1000* Western blot1:500-1:3000* |
| Comment: | Positive Control: 293T , A431 , HeLa , HepG2 , Molt-4 , Raji , mouse liver |
| Restrictions: | For Research Use only |

Handling

| | |
|--------------------|--|
| Format: | Liquid |
| Concentration: | 1 mg/mL |
| Buffer: | 0.1M Tris, 0.1M Glycine, 10 % Glycerol (pH 7). 0.01 % Thimerosal was added as a preservative. |
| Preservative: | Thimerosal (Merthiolate) |
| Precaution of Use: | This product contains Thimerosal (Merthiolate): a POISONOUS AND HAZARDOUS SUBSTANCE which should be handled by trained staff only. |
| Storage: | -20 °C |

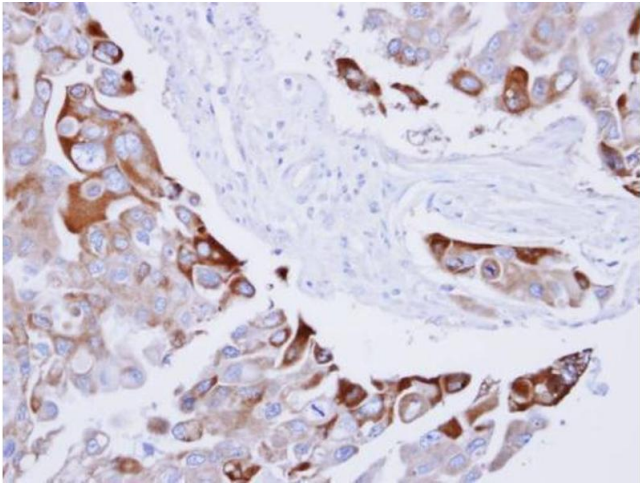
Handling

Storage Comment: Keep as concentrated solution. Aliquot and store at -20°C or below. Avoid multiple freeze-thaw cycles.

Publications

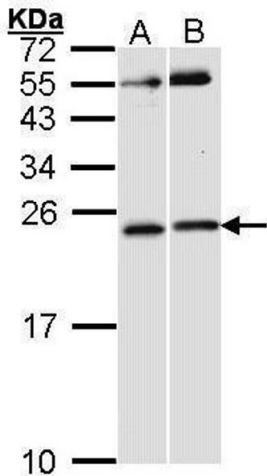
Product cited in: Hinderer, Sudrow, Schneider, Holeiter, Layland, Seifert, Schenke-Layland: "Surface functionalization of electrospun scaffolds using recombinant human decorin attracts circulating endothelial progenitor cells." in: **Scientific reports**, Vol. 8, Issue 1, pp. 110, (2018) ([PubMed](#)).

Images



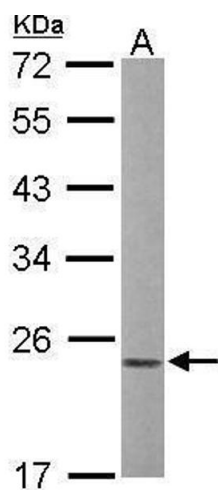
Immunohistochemistry

Image 1. IHC-P Image Immunohistochemical analysis of paraffin-embedded H441 xenograft , using RAC1, antibody at 1:100 dilution.



Western Blotting

Image 2. WB Image Sample (30 ug of whole cell lysate) A: HeLa B: Raji 12% SDS PAGE antibody diluted at 1:1000



Western Blotting

Image 3. WB Image Sample (50 ug of whole cell lysate) A:
mouse liver 12% SDS PAGE antibody diluted at 1:1000

Please check the [product details page](#) for more images. Overall 5 images are available for ABIN2854858.