

Datasheet for ABIN2854868
anti-Granulin antibody (Center)



[Go to Product page](#)

4 Images

Overview

Quantity:	100 µL
Target:	Granulin (GRN)
Binding Specificity:	Center
Reactivity:	Human, Mouse, Rat
Host:	Rabbit
Clonality:	Polyclonal
Conjugate:	This Granulin antibody is un-conjugated
Application:	Western Blotting (WB), Immunocytochemistry (ICC), Immunofluorescence (IF), Immunohistochemistry (Paraffin-embedded Sections) (IHC (p))

Product Details

Immunogen:	Recombinant protein encompassing a sequence within the center region of human Granulins. The exact sequence is proprietary.
Isotype:	IgG
Characteristics:	Rabbit Polyclonal antibody to Granulins (granulin) Granulins antibody
Purification:	Purified by antigen-affinity chromatography.

Target Details

Target:	Granulin (GRN)
Alternative Name:	Granulins (GRN Products)

Target Details

Target Type:	Viral Protein
Background:	<p>Granulins are a family of secreted, glycosylated peptides that are cleaved from a single precursor protein with 7.5 repeats of a highly conserved 12-cysteine granulin/epithelin motif. The 88 kDa precursor protein, progranulin, is also called proepithelin and PC cell-derived growth factor. Cleavage of the signal peptide produces mature granulin which can be further cleaved into a variety of active, 6 kDa peptides. These smaller cleavage products are named granulin A, granulin B, granulin C, etc. Epithelins 1 and 2 are synonymous with granulins A and B, respectively. Both the peptides and intact granulin protein regulate cell growth. However, different members of the granulin protein family may act as inhibitors, stimulators, or have dual actions on cell growth. Granulin family members are important in normal development, wound healing, and tumorigenesis.</p> <p>Cellular Localization: Secreted</p>
Molecular Weight:	64 kDa
Gene ID:	2896

Application Details

Application Notes:	<p>Suggested dilution Reference ICC/IF 1:100-1:1000* IHC (Formalin-fixed paraffin-embedded sections) 1:100-1:1000* Western blot 1:500-1:3000* Not tested in other applications. *Optimal dilutions/concentrations should be determined by the researcher.Suggested dilutionReferenceICC/IF1:100-1:1000* IHC (Formalin-fixed paraffin-embedded sections)1:100-1:1000* Western blot1:500-1:3000*</p>
Comment:	Positive Control: HepG2 , mouse kidney , rat kidney
Restrictions:	For Research Use only

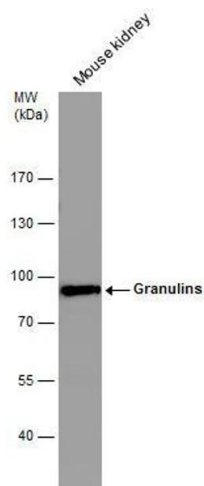
Handling

Format:	Liquid
Concentration:	0.48 mg/mL
Buffer:	1XPBS, 10 % Glycerol (pH 7). 0.01 % Thimerosal was added as a preservative.
Preservative:	Thimerosal (Merthiolate)
Precaution of Use:	This product contains Thimerosal (Merthiolate): a POISONOUS AND HAZARDOUS SUBSTANCE which should be handled by trained staff only.

Handling

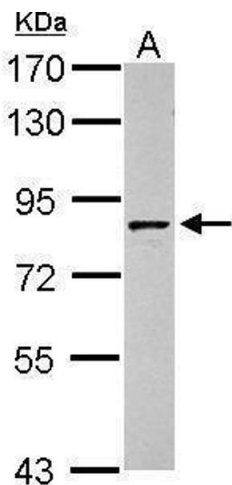
Storage:	-20 °C
Storage Comment:	Keep as concentrated solution. Aliquot and store at -20°C or below. Avoid multiple freeze-thaw cycles.

Images



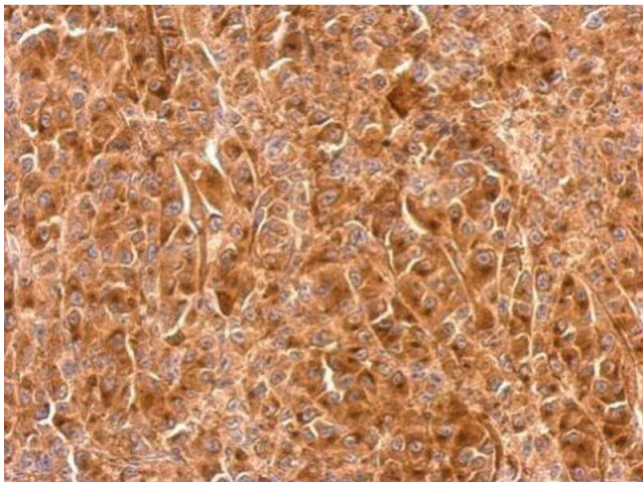
Western Blotting

Image 1. WB Image Mouse tissue extract (50 µg) was separated by 7.5% SDS-PAGE, and the membrane was blotted with Granulins antibody , diluted at 1:1000.



Western Blotting

Image 2. WB Image Sample (30 ug of whole cell lysate) A: HepG2 7.5% SDS PAGE antibody diluted at 1:1000



Immunohistochemistry

Image 3. IHC-P Image Granulins antibody detects GRN protein at cytosol on HBL435 xenograft by immunohistochemical analysis. Sample: Paraffin-embedded HBL435 xenograft. Granulins antibody , dilution: 1:500.

Please check the [product details page](#) for more images. Overall 4 images are available for ABIN2854868.