

Datasheet for ABIN2854870
anti-ALPL antibody (Center)[Go to Product page](#)

2 Images

1 Publication

Overview

Quantity:	100 µL
Target:	ALPL
Binding Specificity:	Center
Reactivity:	Human, Mouse, Sheep
Host:	Rabbit
Clonality:	Polyclonal
Conjugate:	This ALPL antibody is un-conjugated
Application:	Western Blotting (WB), Immunohistochemistry (IHC), Immunohistochemistry (Paraffin-embedded Sections) (IHC (p))

Product Details

Immunogen:	Recombinant protein encompassing a sequence within the center region of human Alkaline Phosphatase (Tissue Non-Specific). The exact sequence is proprietary.
Isotype:	IgG
Cross-Reactivity:	Mouse (Murine), Cat (Feline), Dog (Canine), Rat (Rattus), Cow (Bovine)
Cross-Reactivity (Details):	Mouse (91 %), Cat (90 %), Dog (89 %), Rat (91 %), Bovine (89 %)
Characteristics:	Rabbit polyclonal antibody to alkaline phosphatase (liver/bone/kidney) (alkaline phosphatase, liver/bone/kidney) Alkaline Phosphatase (Tissue Non-Specific) antibody
Purification:	Purified by antigen-affinity chromatography.

Target Details

Target:	ALPL
Alternative Name:	Alkaline Phosphatase (Liver/bone/kidney) (ALPL Products)
Background:	<p>There are at least four distinct but related alkaline phosphatases: intestinal, placental, placental-like, and liver/bone/kidney (tissue non-specific). The first three are located together on chromosome 2, while the tissue non-specific form is located on chromosome 1. The product of this gene is a membrane bound glycosylated enzyme that is not expressed in any particular tissue and is, therefore, referred to as the tissue-nonspecific form of the enzyme. The exact physiological function of the alkaline phosphatases is not known. A proposed function of this form of the enzyme is matrix mineralization, however, mice that lack a functional form of this enzyme show normal skeletal development. This enzyme has been linked directly to hypophosphatasia, a disorder that is characterized by hypercalcemia and includes skeletal defects. The character of this disorder can vary, however, depending on the specific mutation since this determines age of onset and severity of symptoms. Alternatively spliced transcript variants, which encode the same protein, have been identified for this gene.</p> <p>Cellular Localization: Cell membrane, Lipid-anchor , GPI-anchor</p>
Molecular Weight:	57 kDa
Gene ID:	249

Application Details

Application Notes:	<p>Suggested dilution Reference Immunohistochemistry Assay-dependent dilution IHC (Formalin-fixed paraffin-embedded sections) 1:100-1:1000* Western blot 1:500-1:3000* Not tested in other applications. *Optimal dilutions/concentrations should be determined by the researcher.Suggested dilutionReferenceImmunohistochemistryAssay-dependent dilution IHC (Formalin-fixed paraffin-embedded sections)1:100-1:1000* Western blot1:500-1:3000*</p>
Comment:	Positive Control: HeLa , HepG2 , Molt-4 , Raji
Restrictions:	For Research Use only

Handling

Format:	Liquid
Concentration:	0.48 mg/mL
Buffer:	0.1M Tris, 0.1M Glycine, 10 % Glycerol (pH 7). 0.01 % Thimerosal was added as a preservative.

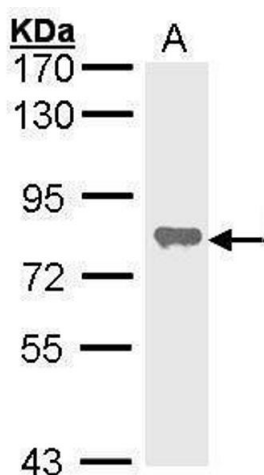
Handling

Preservative:	Thimerosal (Merthiolate)
Precaution of Use:	This product contains Thimerosal (Merthiolate): a POISONOUS AND HAZARDOUS SUBSTANCE which should be handled by trained staff only.
Storage:	-20 °C
Storage Comment:	Keep as concentrated solution. Aliquot and store at -20°C or below. Avoid multiple freeze-thaw cycles.

Publications

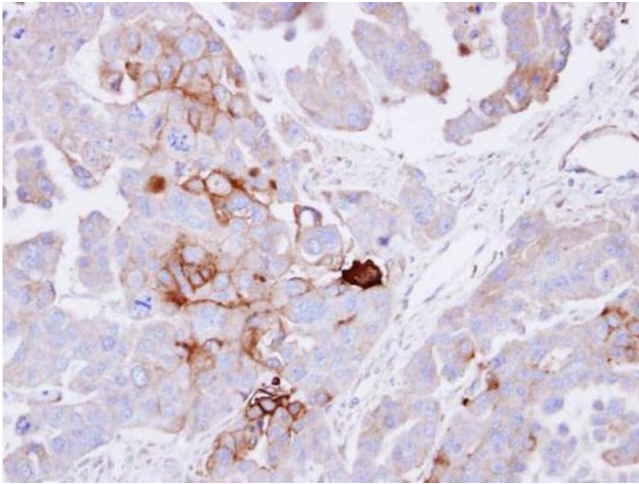
Product cited in: Galmozzi, Kok, Kim, Montenegro-Burke, Lee, Spreafico, Mosure, Albert, Cintron-Colon, Godio, Webb, Conti, Solt, Kojetin, Parker, Peluso, Pru, Siuzdak, Cravatt, Saez: "PGRMC2 is an intracellular haem chaperone critical for adipocyte function." in: **Nature**, Vol. 576, Issue 7785, pp. 138-142, (2020) ([PubMed](#)).

Validation report #104339 for Multiplex Immunohistochemistry (mIHC)



Western Blotting

Image 1. WB Image Sample (30 ug of whole cell lysate) A: HeLa 7.5% SDS PAGE antibody diluted at 1:1000



Immunohistochemistry

Image 2. IHC-P Image Immunohistochemical analysis of paraffin-embedded OVCAR3 xenograft , using alkaline phosphatase (liver/bone/kidney), antibody at 1:100 dilution.