

Datasheet for ABIN2854879

anti-TTLL1 antibody**3** Images[Go to Product page](#)

Overview

Quantity:	100 µL
Target:	TTLL1
Reactivity:	Human
Host:	Rabbit
Clonality:	Polyclonal
Conjugate:	This TTLL1 antibody is un-conjugated
Application:	Western Blotting (WB), Immunofluorescence (IF), Immunocytochemistry (ICC)

Product Details

Immunogen:	Recombinant protein encompassing a sequence within the center region of human TTLL1. The exact sequence is proprietary.
Isotype:	IgG
Cross-Reactivity:	Human, Mouse
Characteristics:	Rabbit Polyclonal antibody to TTLL1 (tubulin tyrosine ligase-like family, member 1) TTLL1 antibody [N1C3]
Purification:	Purified by antigen-affinity chromatography.

Target Details

Target:	TTLL1
Alternative Name:	tubulin tyrosine ligase like 1 (TTLL1 Products)

Target Details

Background: Catalytic subunit of the neuronal tubulin polyglutamylase complex. Modifies alpha- and beta-tubulin, generating side chains of glutamate on the gamma-carboxyl groups of specific glutamate residues within the C-terminal tail of alpha- and beta-tubulin.

Molecular Weight: 49 kDa

Gene ID: 25809

UniProt: [O95922](#)

Application Details

Application Notes: WB: 1:500-1:3000. ICC/IF: 1:100-1:1000. Optimal dilutions/concentrations should be determined by the researcher. Not tested in other applications.

Comment: Positive Control: NIH-3T3 , Molt-4

Restrictions: For Research Use only

Handling

Format: Liquid

Concentration: 1 mg/mL

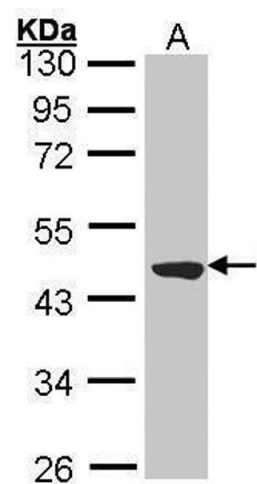
Buffer: 1XPBS (pH 7), 20 % Glycerol, 0.01 % Thimerosal

Preservative: Thimerosal (Merthiolate)

Precaution of Use: This product contains Thimerosal (Merthiolate): a POISONOUS AND HAZARDOUS SUBSTANCE which should be handled by trained staff only.

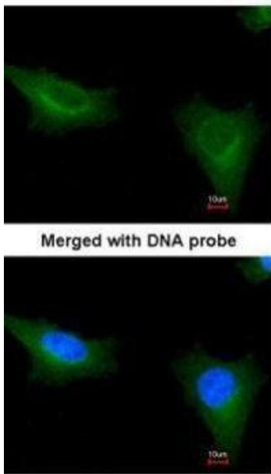
Storage: 4 °C, -20 °C

Storage Comment: Store as concentrated solution. Centrifuge briefly prior to opening vial. For short-term storage (1-2 weeks), store at 4°C. For long-term storage, aliquot and store at -20°C or below. Avoid multiple freeze-thaw cycles.



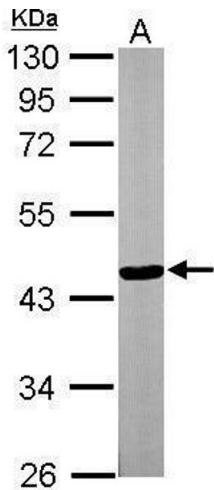
Western Blotting

Image 1. WB Image Sample (30 ug of whole cell lysate) A: Molt-4 , 10% SDS PAGE antibody diluted at 1:2000



Immunofluorescence

Image 2. ICC/IF Image Immunofluorescence analysis of paraformaldehyde-fixed HeLa, using TTL1, antibody at 1:200 dilution.



Western Blotting

Image 3. WB Image Sample (30 ug of whole cell lysate) A: NIH-3T3 10% SDS PAGE antibody diluted at 1:3000