

Datasheet for ABIN2854882
anti-MAPT antibody



[Go to Product page](#)

3 Images

Overview

Quantity:	100 µL
Target:	MAPT
Reactivity:	Human
Host:	Rabbit
Clonality:	Polyclonal
Conjugate:	This MAPT antibody is un-conjugated
Application:	Western Blotting (WB), Immunofluorescence (IF), Immunohistochemistry (Paraffin-embedded Sections) (IHC (p)), Immunocytochemistry (ICC)

Product Details

Immunogen:	Recombinant protein encompassing a sequence within the center region of human Tau. The exact sequence is proprietary.
Isotype:	IgG
Cross-Reactivity:	Human, Mouse, Rat
Characteristics:	Rabbit Polyclonal antibody to Tau (microtubule-associated protein tau) Tau antibody
Purification:	Purified by antigen-affinity chromatography.
Grade:	KO Validated

Target Details

Target:	MAPT
---------	------

Target Details

Alternative Name:	microtubule associated protein tau (MAPT Products)
Background:	<p>This gene encodes the microtubule-associated protein tau (MAPT) whose transcript undergoes complex, regulated alternative splicing, giving rise to several mRNA species. MAPT transcripts are differentially expressed in the nervous system, depending on stage of neuronal maturation and neuron type. MAPT gene mutations have been associated with several neurodegenerative disorders such as Alzheimer's disease, Pick's disease, frontotemporal dementia, cortico-basal degeneration and progressive supranuclear palsy.</p> <p>Cellular Localization: Cytoplasm , cytosol , Cell membrane, Peripheral membrane protein, Cytoplasmic side , cytoskeleton , Cell projection , axon</p>
Molecular Weight:	79 kDa
Gene ID:	4137
UniProt:	P10636
Pathways:	MAPK Signaling , Microtubule Dynamics , M Phase , Regulation of Cell Size

Application Details

Application Notes:	WB: 1:500-1:3000. IHC-P: 1:100-1:1000. Optimal dilutions/concentrations should be determined by the researcher. Not tested in other applications.
Comment:	<p>Positive Control: IMR32 , SK-N-AS , mouse brain , SK-N-SH</p> <p>Validation: Comparison, KO/KD, Orthogonal</p>
Restrictions:	For Research Use only

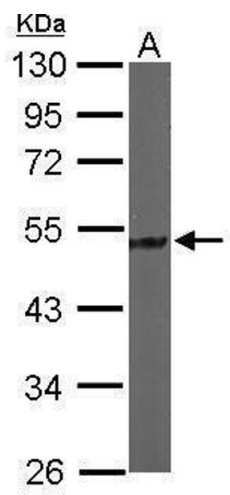
Handling

Format:	Liquid
Concentration:	0.34 mg/mL
Buffer:	1XPBS (pH 7), 1 % BSA, 20 % Glycerol, 0.025 % ProClin 300
Preservative:	ProClin
Precaution of Use:	This product contains ProClin: a POISONOUS AND HAZARDOUS SUBSTANCE which should be handled by trained staff only.
Storage:	4 °C, -20 °C

Handling

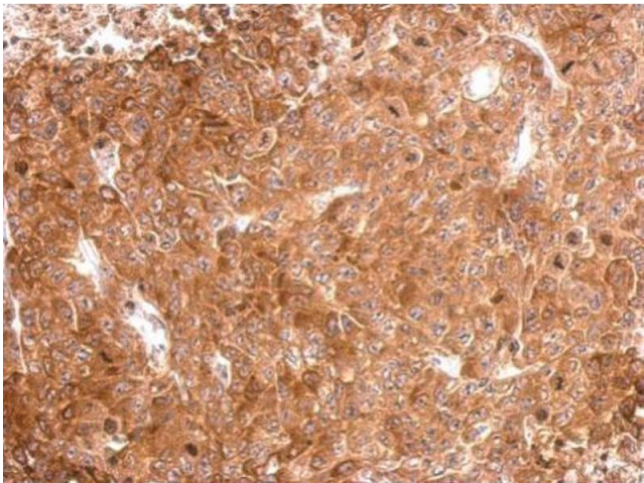
Storage Comment: Store as concentrated solution. Centrifuge briefly prior to opening vial. For short-term storage (1-2 weeks), store at 4°C. For long-term storage, aliquot and store at -20°C or below. Avoid multiple freeze-thaw cycles.

Images



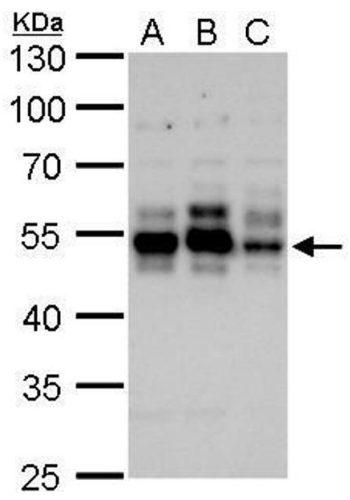
Western Blotting

Image 1. WB Image Sample (50 ug of whole cell lysate) A: Mouse brain 10% SDS PAGE antibody diluted at 1:3000



Immunohistochemistry

Image 2. IHC-P Image Tau antibody detects MAPT protein at cytosol on D54MG xenograft by immunohistochemical analysis. Sample: Paraffin-embedded D54MG xenograft. Tau antibody , dilution: 1:500.



Western Blotting

Image 3. WB Image Tau antibody detects Tau protein by Western blot analysis. A. 30 µg SK-N-SH whole cell lysate/extract B. 30 µg IMR32 whole cell lysate/extract C. 30 µg SK-N-AS whole cell lysate/extract 10 % SDS-PAGE Tau antibody , dilution: 1:500