

Datasheet for ABIN2854883

anti-BMP4 antibody

9 Images

2 Publications

[Go to Product page](#)

Overview

Quantity:	100 µL
Target:	BMP4
Reactivity:	Human
Host:	Rabbit
Clonality:	Polyclonal
Conjugate:	This BMP4 antibody is un-conjugated
Application:	Western Blotting (WB), Immunocytochemistry (ICC), Immunofluorescence (IF), Immunohistochemistry (Paraffin-embedded Sections) (IHC (p))

Product Details

Immunogen:	Recombinant protein encompassing a sequence within the center region of human BMP4. The exact sequence is proprietary.
Isotype:	IgG
Specificity:	This antibody is able to recognize full length BMP4 protein (~55 kDa) and N-terminal propeptide BMP4 protein (~40 kDa) but unable to detect mature form.
Cross-Reactivity:	Human, Mouse
Characteristics:	Rabbit Polyclonal antibody to BMP4 (bone morphogenetic protein 4) BMP4 antibody
Purification:	Purified by antigen-affinity chromatography.

Target Details

Target:	BMP4
Alternative Name:	bone morphogenetic protein 4 (BMP4 Products)
Background:	<p>The protein encoded by this gene is a member of the bone morphogenetic protein family which is part of the transforming growth factor-beta superfamily. The superfamily includes large families of growth and differentiation factors. Bone morphogenetic proteins were originally identified by an ability of demineralized bone extract to induce endochondral osteogenesis in vivo in an extraskeletal site. This particular family member plays an important role in the onset of endochondral bone formation in humans, and a reduction in expression has been associated with a variety of bone diseases, including the heritable disorder Fibrodysplasia Ossificans Progressiva. Alternative splicing in the 5' untranslated region of this gene has been described and three variants are described, all encoding an identical protein.</p> <p>Cellular Localization: Secreted , extracellular space , extracellular matrix</p>
Molecular Weight:	47 kDa
Gene ID:	652
UniProt:	P12644
Pathways:	Steroid Hormone Mediated Signaling Pathway , Regulation of Muscle Cell Differentiation , Tube Formation , Skeletal Muscle Fiber Development

Application Details

Application Notes:	WB: 1:500-1:3000. ICC/IF: 1:100-1:1000. IHC-P: 1:100-1:1000. Optimal dilutions/concentrations should be determined by the researcher. Not tested in other applications.
Comment:	Positive Control: NIH-3T3 , JC , HepG2 conditioned medium Validation: Orthogonal
Restrictions:	For Research Use only

Handling

Format:	Liquid
Concentration:	0.36 mg/mL
Buffer:	1XPBS (pH 7), 1 % BSA, 20 % Glycerol, 0.025 % ProClin 300
Preservative:	ProClin

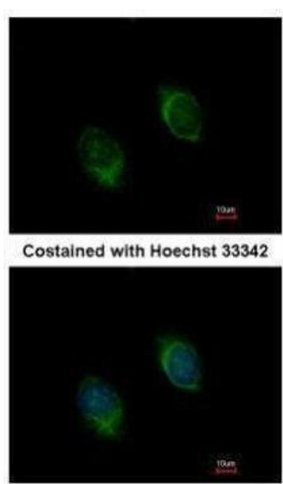
Handling

Precaution of Use:	This product contains ProClin: a POISONOUS AND HAZARDOUS SUBSTANCE which should be handled by trained staff only.
Storage:	4 °C, -20 °C
Storage Comment:	Store as concentrated solution. Centrifuge briefly prior to opening vial. For short-term storage (1-2 weeks), store at 4°C. For long-term storage, aliquot and store at -20°C or below. Avoid multiple freeze-thaw cycles.

Publications

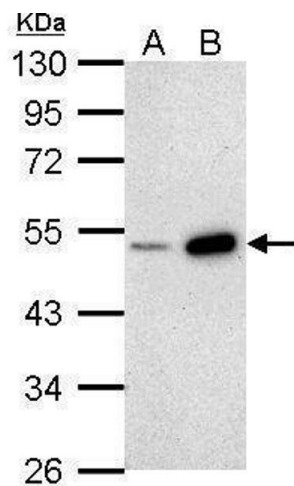
Product cited in:	Hinderer, Sudrow, Schneider, Holeiter, Layland, Seifert, Schenke-Layland: "Surface functionalization of electrospun scaffolds using recombinant human decorin attracts circulating endothelial progenitor cells." in: Scientific reports , Vol. 8, Issue 1, pp. 110, (2018) (PubMed).
-------------------	--

Images



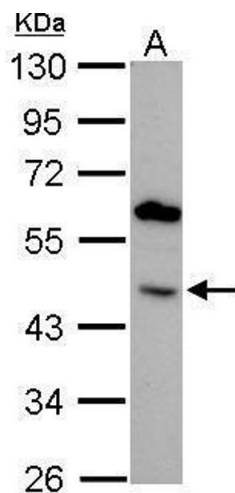
Immunofluorescence

Image 1. ICC/IF Image Immunofluorescence analysis of methanol-fixed HeLa, using BMP4, antibody at 1:100 dilution.



Western Blotting

Image 2. WB Image Sample (30 ug of whole cell lysate) A: NIH-3T3 B: JC 10% SDS PAGE antibody diluted at 1:1000



Western Blotting

Image 3. WB Image BMP4 antibody detects BMP4 protein by Western blot analysis. A. 30 µg A549 whole cell lysate/extract 10 % SDS-PAGE BMP4 antibody , dilution: 1:1000

Please check the [product details page](#) for more images. Overall 9 images are available for ABIN2854883.