

Datasheet for ABIN2854885
anti-NR6A1 antibody (C-Term)[Go to Product page](#)

1 Image

Overview

Quantity:	100 µL
Target:	NR6A1
Binding Specificity:	C-Term
Reactivity:	Human
Host:	Rabbit
Clonality:	Polyclonal
Conjugate:	This NR6A1 antibody is un-conjugated
Application:	Western Blotting (WB)

Product Details

Immunogen:	Recombinant protein encompassing a sequence within the C-terminus region of human GCNF. The exact sequence is proprietary.
Isotype:	IgG
Cross-Reactivity:	Human
Characteristics:	Rabbit Polyclonal antibody to GCNF (nuclear receptor subfamily 6, group A, member 1) GCNF antibody [C1C3]
Purification:	Purified by antigen-affinity chromatography.

Target Details

Target:	NR6A1
---------	-------

Target Details

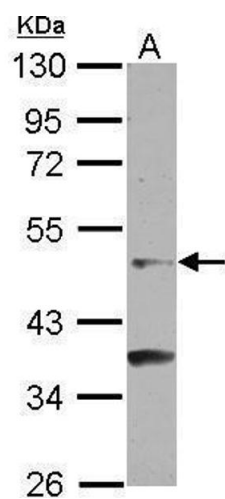
Alternative Name:	nuclear receptor subfamily 6 group A member 1 (NR6A1 Products)
Background:	<p>This gene encodes an orphan nuclear receptor which is a member of the nuclear hormone receptor family. Its expression pattern suggests that it may be involved in neurogenesis and germ cell development. The protein can homodimerize and bind DNA, but in vivo targets have not been identified. The gene expresses at least alternatively spliced transcript variants.</p> <p>Cellular Localization: Nucleus</p>
Molecular Weight:	54 kDa
Gene ID:	2649
UniProt:	Q15406
Pathways:	Nuclear Receptor Transcription Pathway , Steroid Hormone Mediated Signaling Pathway

Application Details

Application Notes:	WB: 1:500-1:3000. Optimal dilutions/concentrations should be determined by the researcher. Not tested in other applications.
Comment:	Positive Control: NT2D1
Restrictions:	For Research Use only

Handling

Format:	Liquid
Concentration:	0.76 mg/mL
Buffer:	0.1M Tris-Glycine (pH 7), 20 % Glycerol, 0.01 % Thimerosal
Preservative:	Thimerosal (Merthiolate)
Precaution of Use:	This product contains Thimerosal (Merthiolate): a POISONOUS AND HAZARDOUS SUBSTANCE which should be handled by trained staff only.
Storage:	4 °C,-20 °C
Storage Comment:	Store as concentrated solution. Centrifuge briefly prior to opening vial. For short-term storage (1-2 weeks), store at 4°C. For long-term storage, aliquot and store at -20°C or below. Avoid multiple freeze-thaw cycles.



Western Blotting

Image 1. WB Image Sample (30 ug of whole cell lysate) A:
NT2D1 10% SDS PAGE antibody diluted at 1:500