

Datasheet for ABIN2854888
anti-Crk antibody (Center)

3 Images

[Go to Product page](#)

Overview

Quantity:	100 µL
Target:	Crk (CRK)
Binding Specificity:	Center
Reactivity:	Human, Mouse
Host:	Rabbit
Clonality:	Polyclonal
Conjugate:	This Crk antibody is un-conjugated
Application:	Western Blotting (WB), Immunofluorescence (IF), Immunocytochemistry (ICC)

Product Details

Immunogen:	Recombinant protein encompassing a sequence within the center region of human CRK. The exact sequence is proprietary.
Isotype:	IgG
Cross-Reactivity:	Cow (Bovine)
Cross-Reactivity (Details):	Bovine (100 %)
Characteristics:	Rabbit Polyclonal antibody to CRK (v-crk sarcoma virus CT10 oncogene homolog (avian)) CRK antibody [N2C3]
Purification:	Purified by antigen-affinity chromatography.

Target Details

Target:	Crk (CRK)
Alternative Name:	CRK (CRK Products)
Background:	This gene encodes a member of an adapter protein family that binds to several tyrosine-phosphorylated proteins. The product of this gene has several SH2 and SH3 domains (src-homology domains) and is involved in several signaling pathways, recruiting cytoplasmic proteins in the vicinity of tyrosine kinase through SH2-phosphotyrosine interaction. The N-terminal SH2 domain of this protein functions as a positive regulator of transformation whereas the C-terminal SH3 domain functions as a negative regulator of transformation. Two alternative transcripts encoding different isoforms with distinct biological activity have been described.
Molecular Weight:	34 kDa
Gene ID:	1398
Pathways:	Neurotrophin Signaling Pathway , CXCR4-mediated Signaling Events , Signaling of Hepatocyte Growth Factor Receptor

Application Details

Application Notes:	Suggested dilution Reference ICC/IF 1:100-1:1000* Western blot 1:500-1:3000* Not tested in other applications. *Optimal dilutions/concentrations should be determined by the researcher.Suggested dilutionReferenceICC/IF1:100-1:1000* Western blot1:500-1:3000*
Comment:	Positive Control: 293T , A431 , H1299 , HepG2 , Raji , NIH-3T3
Restrictions:	For Research Use only

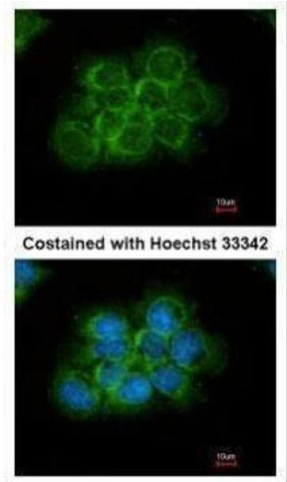
Handling

Format:	Liquid
Concentration:	1 mg/mL
Buffer:	1XPBS, 40 % Glycerol (pH 7). 0.01 % Thimerosal was added as a preservative.
Preservative:	Thimerosal (Merthiolate)
Precaution of Use:	This product contains Thimerosal (Merthiolate): a POISONOUS AND HAZARDOUS SUBSTANCE which should be handled by trained staff only.
Storage:	-20 °C

Handling

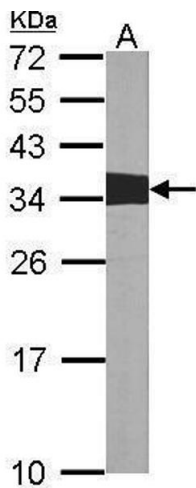
Storage Comment: Keep as concentrated solution. Aliquot and store at -20°C or below. Avoid multiple freeze-thaw cycles.

Images



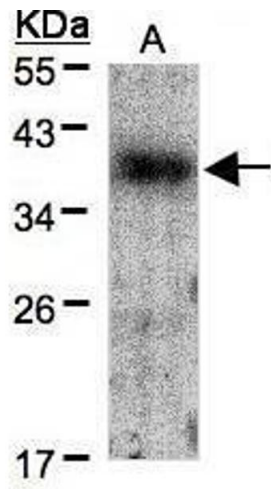
Immunofluorescence

Image 1. ICC/IF Image Immunofluorescence analysis of methanol-fixed A431, using CRK, antibody at 1:200 dilution.



Western Blotting

Image 2. WB Image Sample (30 ug of whole cell lysate)
A:NIH-3T3 12% SDS PAGE antibody diluted at 1:1000



Western Blotting

Image 3. WB Image Sample(30 μg of whole cell lysate)
A:A431, 12% SDS PAGE antibody diluted at 1:1500