

Datasheet for ABIN2854894
anti-SNRPE antibody (Internal Region)

5 Images

[Go to Product page](#)

Overview

Quantity:	100 µL
Target:	SNRPE
Binding Specificity:	Internal Region
Reactivity:	Human, Mouse, Rat
Host:	Rabbit
Clonality:	Polyclonal
Conjugate:	This SNRPE antibody is un-conjugated
Application:	Western Blotting (WB), Immunohistochemistry (Paraffin-embedded Sections) (IHC (p)), Immunoprecipitation (IP)

Product Details

Immunogen:	Recombinant protein encompassing a sequence within the center region of human B-Raf. The exact sequence is proprietary.
Isotype:	IgG
Characteristics:	Rabbit polyclonal antibody to B-Raf (v-raf murine sarcoma viral oncogene homolog B1) B-Raf antibody [N2C1], Internal
Purification:	Purified by antigen-affinity chromatography.

Target Details

Target:	SNRPE
Alternative Name:	B-Raf (SNRPE Products)

Target Details

Background: This gene encodes a protein belonging to the raf/mil family of serine/threonine protein kinases. This protein plays a role in regulating the MAP kinase/ERKs signaling pathway, which affects cell division, differentiation, and secretion. Mutations in this gene are associated with cardiofaciocutaneous syndrome, a disease characterized by heart defects, mental retardation and a distinctive facial appearance. Mutations in this gene have also been associated with various cancers, including non-Hodgkin lymphoma, colorectal cancer, malignant melanoma, thyroid carcinoma, non-small cell lung carcinoma, and adenocarcinoma of lung. A pseudogene, which is located on chromosome X, has been identified for this gene.

Cellular Localization: Cytoplasm

Molecular Weight: 84 kDa

Gene ID: 673

Pathways: [Ribonucleoprotein Complex Subunit Organization](#), [Hepatitis C](#)

Application Details

Application Notes: Suggested dilution Reference IHC (Formalin-fixed paraffin-embedded sections) 1:100-1:1000* Immunoprecipitation 1:100-1:500* Western blot 1:500-1:10000* Not tested in other applications. *Optimal dilutions/concentrations should be determined by the researcher. Suggested dilution Reference IHC (Formalin-fixed paraffin-embedded sections) 1:100-1:1000* Immunoprecipitation 1:100-1:500* Western blot 1:500-1:10000*

Comment: Positive Control: A549 , H1299 , HCT116 , PC-12

Restrictions: For Research Use only

Handling

Format: Liquid

Concentration: 1 mg/mL

Buffer: 1XPBS, 1 % BSA, 20 % Glycerol (pH 7). 0.01 % Thimerosal was added as a preservative.

Preservative: Thimerosal (Merthiolate)

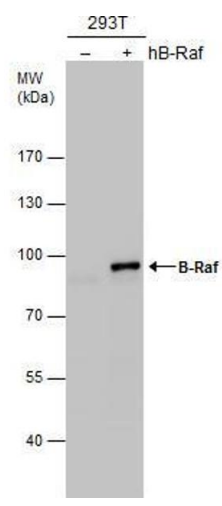
Precaution of Use: This product contains Thimerosal (Merthiolate): a POISONOUS AND HAZARDOUS SUBSTANCE which should be handled by trained staff only.

Storage: -20 °C

Handling

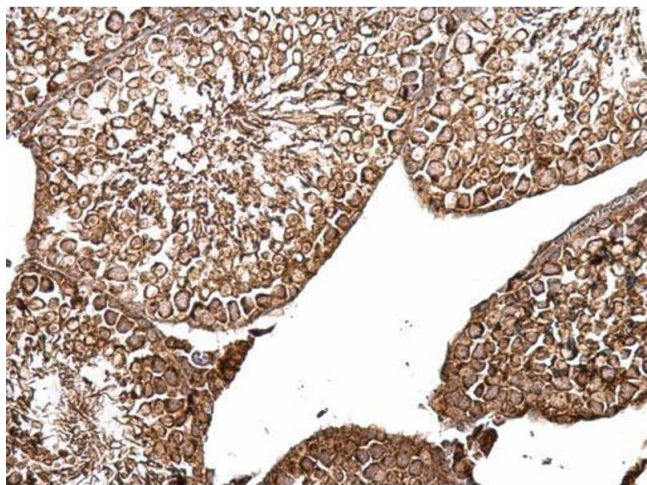
Storage Comment: Keep as concentrated solution. Aliquot and store at -20°C or below. Avoid multiple freeze-thaw cycles.

Validation report #104437 for Cleavage Under Targets and Release Using Nuclease (CUT&RUN)



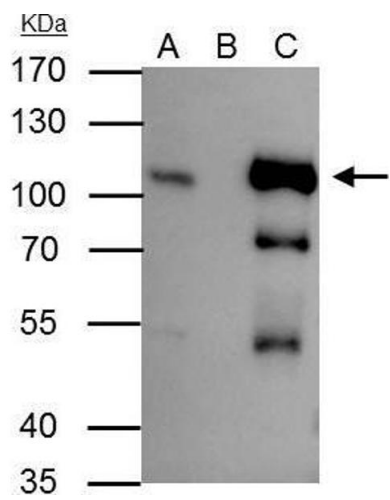
Western Blotting

Image 1. WB Image B-Raf antibody [N2C1], Internal detects B-Raf protein by western blot analysis. Non-transfected (-) and B-Raf-transfected (+) 293T whole cell extracts (30 µg) were separated by 7.5% SDS-PAGE, and the membrane was blotted with B-Raf antibody [N2C1], Internal , diluted at 1:5000.



Immunohistochemistry

Image 2. IHC-P Image B-Raf antibody [N2C1], Internal detects B-Raf protein at cytosol on mouse testis by immunohistochemical analysis. Sample: Paraffin-embedded mouse testis. B-Raf antibody [N2C1], Internal , dilution: 1:500.



Immunoprecipitation

Image 3. IP Image B-Raf antibody [N2C1], Internal immunoprecipitates B-Raf protein in IP experiments.

Please check the [product details page](#) for more images. Overall 5 images are available for ABIN2854894.