



Datasheet for ABIN2854897
anti-Amphiregulin antibody



[Go to Product page](#)

3 Images

2 Publications

Overview

Quantity:	100 µL
Target:	Amphiregulin (AREG)
Reactivity:	Human
Host:	Rabbit
Clonality:	Polyclonal
Conjugate:	This Amphiregulin antibody is un-conjugated
Application:	Western Blotting (WB), Immunohistochemistry (Paraffin-embedded Sections) (IHC (p))

Product Details

Immunogen:	Recombinant protein encompassing a sequence within the center region of human Amphiregulin. The exact sequence is proprietary.
Isotype:	IgG
Cross-Reactivity:	Human
Characteristics:	Rabbit Polyclonal antibody to Amphiregulin (amphiregulin) Amphiregulin antibody
Purification:	Purified by antigen-affinity chromatography.

Target Details

Target:	Amphiregulin (AREG)
Alternative Name:	amphiregulin (AREG Products)

Target Details

Background: The protein encoded by this gene is a member of the epidermal growth factor family. It is an autocrine growth factor as well as a mitogen for astrocytes, Schwann cells, and fibroblasts. It is related to epidermal growth factor (EGF) and transforming growth factor alpha (TGF-alpha). This protein interacts with the EGF/TGF-alpha receptor to promote the growth of normal epithelial cells and inhibits the growth of certain aggressive carcinoma cell lines. This encoded protein is associated with a psoriasis-like skin phenotype.

Cellular Localization: Membrane

Molecular Weight: 28 kDa

Gene ID: 374

UniProt: [P15514](#)

Pathways: [RTK Signaling, EGFR Signaling Pathway](#)

Application Details

Application Notes: WB: 1:500-1:3000. IHC-P: 1:100-1:1000. Optimal dilutions/concentrations should be determined by the researcher. Not tested in other applications.

Comment: Positive Control: AREG-transfected 293T

Restrictions: For Research Use only

Handling

Format: Liquid

Concentration: 0.17 mg/mL

Buffer: 1XPBS (pH 7), 1 % BSA, 20 % Glycerol, 0.025 % ProClin 300

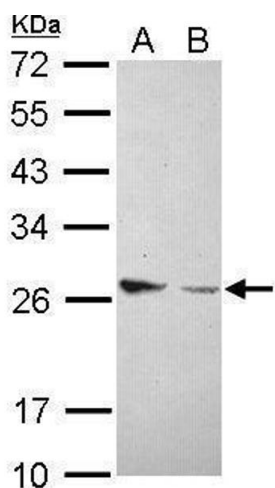
Preservative: ProClin

Precaution of Use: This product contains ProClin: a POISONOUS AND HAZARDOUS SUBSTANCE which should be handled by trained staff only.

Storage: 4 °C,-20 °C

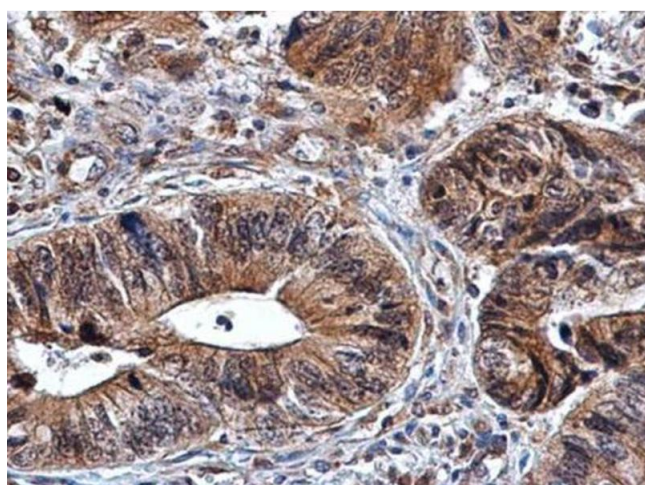
Storage Comment: Store as concentrated solution. Centrifuge briefly prior to opening vial. For short-term storage (1-2 weeks), store at 4°C. For long-term storage, aliquot and store at -20°C or below. Avoid multiple freeze-thaw cycles.

Product cited in: Ochiai, Hayashi, Umeda, Yoshimura, Harada, Shimizu, Nakano, Saitoh, Liu, Yamamoto, Okamura, Ohkawa, Kimura, Nikaido: "Genome-wide kinetic properties of transcriptional bursting in mouse embryonic stem cells." in: **Science advances**, Vol. 6, Issue 25, pp. eaaz6699, (2020) ([PubMed](#)).



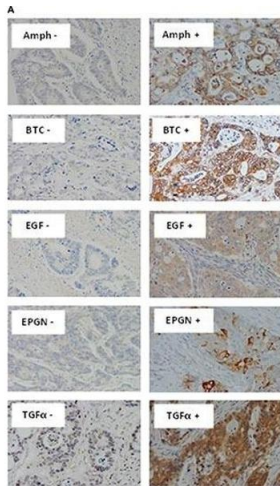
Western Blotting

Image 1. WB Image Sample (30 ug of whole cell lysate) A: IMR32 B: U87-MG 12% SDS PAGE antibody diluted at 1:1000



Immunohistochemistry

Image 2. IHC-P Image Amphiregulin antibody detects Amphiregulin protein at cytoplasm in human colon cancer by immunohistochemical analysis. Sample: Paraffin-embedded human colon cancer. Amphiregulin antibody, diluted at 1:750.



Immunohistochemistry

Image 3. Immunostaining of EGFR ligands and co-expression with wtEGFR in mCRC specimens. Expression of Amphiregulin, BTC, EGF, Epigen, and TGF α (A), and co-expression of wtEGFR, Amphiregulin, BTC, EGF, epigen, and TGF α in a particular patient (B) in formalin fixed paraffin embedded tumour sections stained immunohistochemically as described under methods and patients section. Magnification: x200 - figure provided by CiteAb. Source: PMID28032593