

Datasheet for ABIN2854912 anti-SEC13 antibody (Center)



[Go to Product page](#)

4 Images

1 Publication

Overview

| | |
|----------------------|---|
| Quantity: | 100 µL |
| Target: | SEC13 |
| Binding Specificity: | Center |
| Reactivity: | Human |
| Host: | Rabbit |
| Clonality: | Polyclonal |
| Conjugate: | This SEC13 antibody is un-conjugated |
| Application: | Western Blotting (WB), Immunoprecipitation (IP), Immunofluorescence (IF), Immunohistochemistry (Paraffin-embedded Sections) (IHC (p)), Immunocytochemistry (ICC) |

Product Details

| | |
|-----------------------------|--|
| Immunogen: | Recombinant protein encompassing a sequence within the center region of human SEC13L1. The exact sequence is proprietary. |
| Isotype: | IgG |
| Cross-Reactivity: | Mouse (Murine), Rat (Rattus), Xenopus laevis, Zebrafish (Danio rerio), Cow (Bovine), Xenopus tropicalis |
| Cross-Reactivity (Details): | Mouse (97 %), Rat (97 %), Xenopus laevis (88 %), Zebrafish (87 %), Bovine (96 %), Xenopus tropicalis (89 %) |
| Characteristics: | Rabbit Polyclonal antibody to SEC13L1 (SEC13 homolog (S. cerevisiae)) SEC13L1 antibody [N1C3] |
| Purification: | Purified by antigen-affinity chromatography. |

Target Details

| | |
|-------------------|--|
| Target: | SEC13 |
| Alternative Name: | SEC13L1 (SEC13 Products) |
| Background: | The protein encoded by this gene belongs to the SEC13 family of WD-repeat proteins. It is a constituent of the endoplasmic reticulum and the nuclear pore complex. It has similarity to the yeast SEC13 protein, which is required for vesicle biogenesis from endoplasmic reticulum during the transport of proteins. Multiple alternatively spliced transcript variants have been found. |
| Molecular Weight: | 36 kDa |
| Gene ID: | 6396 |

Application Details

| | |
|--------------------|--|
| Application Notes: | Suggested dilution Reference ICC/IF 1:100-1:1000* IHC (Formalin-fixed paraffin-embedded sections) 1:100-1:1000* Immunoprecipitation 1:100-1:1000* Western blot 1:500-1:3000* Not tested in other applications. *Optimal dilutions/concentrations should be determined by the researcher.Suggested dilutionReferenceICC/IF1:100-1:1000* IHC (Formalin-fixed paraffin-embedded sections)1:100-1:1000* Immunoprecipitation1:100-1:1000* Western blot1:500-1:3000* |
| Comment: | Positive Control: 293T , A431 , H1299 , HeLa , HepG2 , Molt-4 , Raji |
| Restrictions: | For Research Use only |

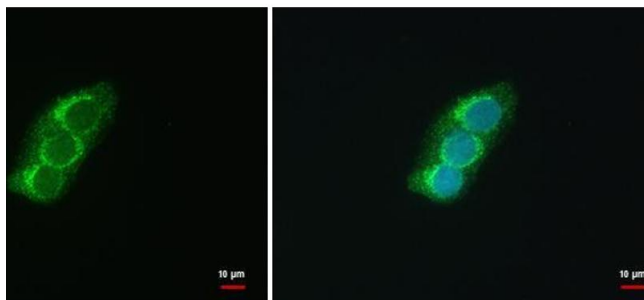
Handling

| | |
|--------------------|--|
| Format: | Liquid |
| Concentration: | 1 mg/mL |
| Buffer: | 0.1M Tris, 0.1M Glycine, 10 % Glycerol (pH 7). 0.01 % Thimerosal was added as a preservative. |
| Preservative: | Thimerosal (Merthiolate) |
| Precaution of Use: | This product contains Thimerosal (Merthiolate): a POISONOUS AND HAZARDOUS SUBSTANCE which should be handled by trained staff only. |
| Storage: | -20 °C |
| Storage Comment: | Keep as concentrated solution. Aliquot and store at -20°C or below. Avoid multiple freeze-thaw cycles. |

Publications

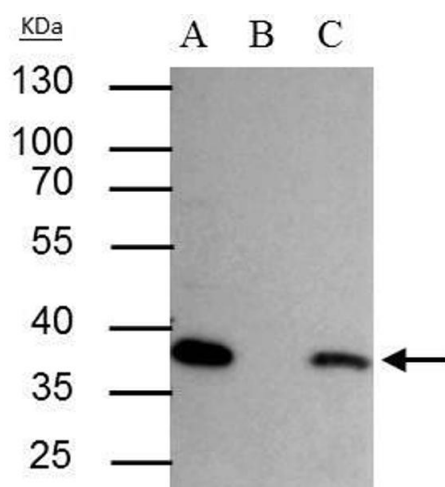
Product cited in: Hinderer, Sudrow, Schneider, Holeiter, Layland, Seifert, Schenke-Layland: "Surface functionalization of electrospun scaffolds using recombinant human decorin attracts circulating endothelial progenitor cells." in: **Scientific reports**, Vol. 8, Issue 1, pp. 110, (2018) ([PubMed](#)).

Images



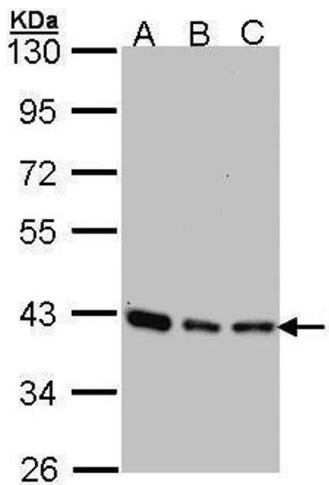
Immunofluorescence

Image 1. ICC/IF Image SEC13L1 antibody [N1C3] detects SEC13L1 protein at COP II vesicles by immunofluorescent analysis. Sample: HepG2 cells were fixed in 4% paraformaldehyde at RT for 15 min. Green: SEC13L1 protein stained by SEC13L1 antibody [N1C3], diluted at 1:500. Blue: Hoechst 33342 staining.



Immunoprecipitation

Image 2. IP Image SEC13L1 antibody immunoprecipitates SEC13L1 protein in IP experiments. IP Sample: HepG2 whole cell lysate/extract A : 30 µg whole cell lysate/extract of SEC13L1 protein expressing HepG2 cells B : Control with 2.5 µg of pre-immune rabbit IgG C : Immunoprecipitation of SEC13L1 by 2.5 µg of SEC13L1 antibody, 10% SDS-PAGE The immunoprecipitated SEC13L1 protein was detected by SEC13L1 antibody, diluted at 1 : 1000. EasyBlot anti-rabbit IgG (HRP) was used as a secondary reagent.



Western Blotting

Image 3. WB Image Sample (30 ug of whole cell lysate) A: 293T B: A431 , C: H1299 10% SDS PAGE antibody diluted at 1:1000

Please check the [product details page](#) for more images. Overall 4 images are available for ABIN2854912.