

Datasheet for ABIN2854918
anti-APAF1 antibody (C-Term)[Go to Product page](#)

1 Image

Overview

Quantity:	100 µL
Target:	APAF1
Binding Specificity:	C-Term
Reactivity:	Human
Host:	Rabbit
Clonality:	Polyclonal
Conjugate:	This APAF1 antibody is un-conjugated
Application:	Immunohistochemistry (Paraffin-embedded Sections) (IHC (p))

Product Details

Immunogen:	Recombinant protein encompassing a sequence within the C-terminus region of human APAF1. The exact sequence is proprietary.
Isotype:	IgG
Cross-Reactivity:	Human, Mouse, Rat
Characteristics:	Rabbit Polyclonal antibody to APAF1 (apoptotic peptidase activating factor 1) APAF1 antibody [C3], C-term
Purification:	Purified by antigen-affinity chromatography.

Target Details

Target:	APAF1
---------	-------

Target Details

Alternative Name:	apoptotic peptidase activating factor 1 (APAF1 Products)
Background:	<p>This gene encodes a cytoplasmic protein that initiates apoptosis. This protein contains several copies of the WD-40 domain, a caspase recruitment domain (CARD), and an ATPase domain (NB-ARC). Upon binding cytochrome c and dATP, this protein forms an oligomeric apoptosome. The apoptosome binds and cleaves caspase 9 preproprotein, releasing its mature, activated form. Activated caspase 9 stimulates the subsequent caspase cascade that commits the cell to apoptosis. Alternative splicing results in several transcript variants encoding different isoforms.</p> <p>Cellular Localization: Cytoplasm</p>
Molecular Weight:	142 kDa
Gene ID:	317
UniProt:	O14727
Pathways:	p53 Signaling , Apoptosis , Caspase Cascade in Apoptosis , Tube Formation , Positive Regulation of Endopeptidase Activity

Application Details

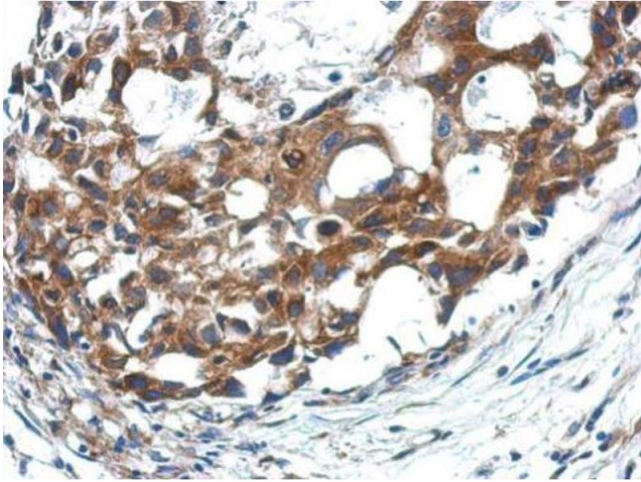
Application Notes:	IHC-P: 1:100-1:1000. Optimal dilutions/concentrations should be determined by the researcher. Not tested in other applications.
Restrictions:	For Research Use only

Handling

Format:	Liquid
Concentration:	0.51 mg/mL
Buffer:	1XPBS (pH 7), 1 % BSA, 20 % Glycerol, 0.01 % Thimerosal
Preservative:	Thimerosal (Merthiolate)
Precaution of Use:	This product contains Thimerosal (Merthiolate): a POISONOUS AND HAZARDOUS SUBSTANCE which should be handled by trained staff only.
Storage:	4 °C,-20 °C
Storage Comment:	Store as concentrated solution. Centrifuge briefly prior to opening vial. For short-term storage (1-2 weeks), store at 4°C. For long-term storage, aliquot and store at -20°C or below. Avoid

multiple freeze-thaw cycles.

Validation report #104342 for Multiplex Immunohistochemistry (mIHC)



Immunohistochemistry

Image 1. IHC-P Image Immunohistochemical analysis of paraffin-embedded human breast cancer, using APAF1, antibody at 1:500 dilution.