

Datasheet for ABIN2854920
anti-Annexin a1 antibody

6 Images

[Go to Product page](#)

Overview

Quantity:	100 µL
Target:	Annexin a1 (ANXA1)
Reactivity:	Human
Host:	Rabbit
Clonality:	Polyclonal
Conjugate:	This Annexin a1 antibody is un-conjugated
Application:	Western Blotting (WB), Immunoprecipitation (IP), Immunofluorescence (IF), Immunohistochemistry (Paraffin-embedded Sections) (IHC (p)), Immunocytochemistry (ICC)

Product Details

Immunogen:	Recombinant protein encompassing a sequence within the center region of human Annexin A1. The exact sequence is proprietary.
Isotype:	IgG
Cross-Reactivity:	Human, Mouse, Rat
Characteristics:	Rabbit Polyclonal antibody to Annexin A1 (annexin A1) Annexin A1 antibody
Purification:	Purified by antigen-affinity chromatography.

Target Details

Target:	Annexin a1 (ANXA1)
Alternative Name:	annexin A1 (ANXA1 Products)

Target Details

Background:	<p>Annexin I belongs to a family of Ca(2+)-dependent phospholipid binding proteins which have a molecular weight of approximately 35,000 to 40,000 and are preferentially located on the cytosolic face of the plasma membrane. Annexin I protein has an apparent relative molecular mass of 40 kDa, with phospholipase A2 inhibitory activity. Since phospholipase A2 is required for the biosynthesis of the potent mediators of inflammation, prostaglandins and leukotrienes, annexin I may have potential anti-inflammatory activity.</p> <p>Cellular Localization: Nucleus , Cytoplasm , Cell projection , cilium , Basolateral cell membrane</p>
Molecular Weight:	39 kDa
Gene ID:	301
UniProt:	P04083
Pathways:	Hormone Transport

Application Details

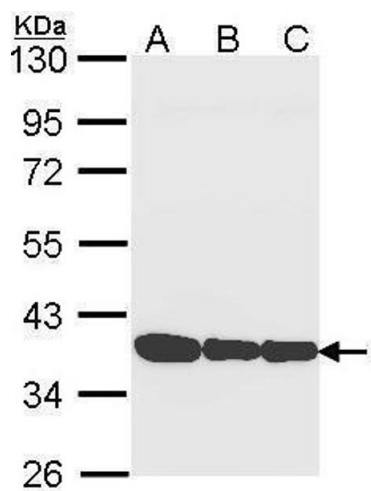
Application Notes:	WB: 1:500-1:3000. ICC/IF: 1:100-1:1000. IHC-P: 1:100-1:1000. IP: 1:100-1:500. Optimal dilutions/concentrations should be determined by the researcher. Not tested in other applications.
Comment:	<p>Positive Control: NIH-3T3 , JC</p> <p>Validation: Comparison, KO/KD, Orthogonal, Overexpression</p>
Restrictions:	For Research Use only

Handling

Format:	Liquid
Concentration:	0.95 mg/mL
Buffer:	1XPBS (pH 7), 20 % Glycerol, 0.025 % ProClin 300
Preservative:	ProClin
Precaution of Use:	This product contains ProClin: a POISONOUS AND HAZARDOUS SUBSTANCE which should be handled by trained staff only.
Storage:	4 °C,-20 °C
Storage Comment:	Store as concentrated solution. Centrifuge briefly prior to opening vial. For short-term storage (1-2 weeks), store at 4°C. For long-term storage, aliquot and store at -20°C or below. Avoid

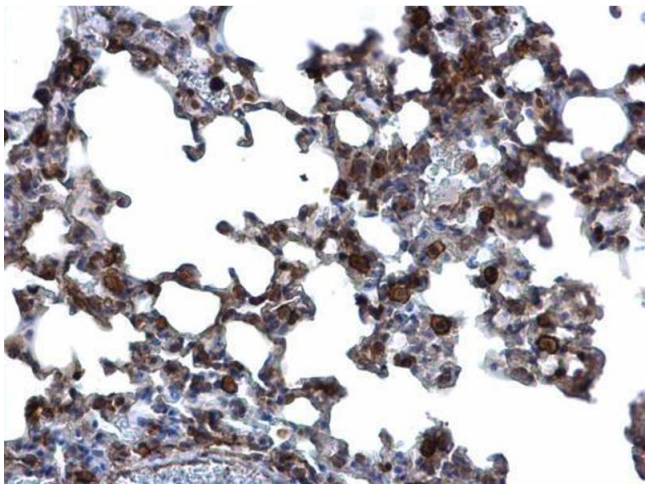
multiple freeze-thaw cycles.

Validation report #104426 for Immunohistochemistry (IHC)



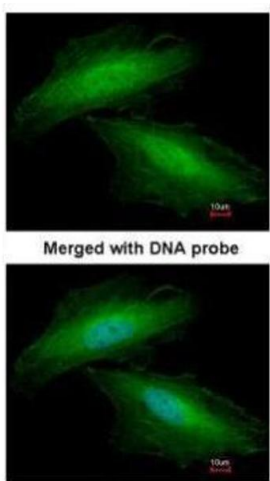
Western Blotting

Image 1. WB Image Sample (30 ug of whole cell lysate) A: A431 , B: H1299 C: HeLa 10% SDS PAGE antibody diluted at 1:1000



Immunohistochemistry

Image 2. IHC-P Image Annexin A1 antibody detects Annexin A1 protein at cytosol and nucleus on mouse lung by immunohistochemical analysis. Sample: Paraffin-embedded mouse lung. Annexin A1 antibody , dilution: 1:500.



Immunofluorescence

Image 3. ICC/IF Image Immunofluorescence analysis of paraformaldehyde-fixed HeLa, using Annexin I, antibody at 1:200 dilution.

Please check the [product details page](#) for more images. Overall 6 images are available for ABIN2854920.