

Datasheet for ABIN2854923
anti-14-3-3 zeta antibody (Center)



[Go to Product page](#)

5 Images

Overview

Quantity:	100 µL
Target:	14-3-3 zeta (YWHAZ)
Binding Specificity:	Center
Reactivity:	Human, Mouse
Host:	Rabbit
Clonality:	Polyclonal
Conjugate:	This 14-3-3 zeta antibody is un-conjugated
Application:	Western Blotting (WB), Immunofluorescence (IF), Immunohistochemistry (Paraffin-embedded Sections) (IHC (p)), Immunocytochemistry (ICC)

Product Details

Immunogen:	Recombinant protein encompassing a sequence within the center region of human 14-3-3 zeta. The exact sequence is proprietary.
Isotype:	IgG
Cross-Reactivity:	Rhesus Monkey, Cow (Bovine)
Cross-Reactivity (Details):	Rhesus Monkey (100 %), Bovine (100 %)
Characteristics:	Rabbit Polyclonal antibody to 14-3-3 zeta (tyrosine 3-monooxygenase/tryptophan 5-monooxygenase activation protein, zeta polypeptide) 14-3-3 zeta antibody
Purification:	Purified by antigen-affinity chromatography.

Target Details

Target: 14-3-3 zeta (YWHAZ)

Alternative Name: 14-3-3 zeta ([YWHAZ Products](#))

Background: This gene product belongs to the 14-3-3 family of proteins which mediate signal transduction by binding to phosphoserine-containing proteins. This highly conserved protein family is found in both plants and mammals, and this protein is 99 % identical to the mouse, rat and sheep orthologs. The encoded protein interacts with IRS1 protein, suggesting a role in regulating insulin sensitivity. Several transcript variants that differ in the 5' UTR but that encode the same protein have been identified for this gene.

Cellular Localization: Cytoplasm , Melanosome

Molecular Weight: 28 kDa

Gene ID: 7534

Pathways: [Apoptosis](#), [Hormone Transport](#), [Myometrial Relaxation and Contraction](#), [Regulation of Leukocyte Mediated Immunity](#), [Positive Regulation of Immune Effector Process](#), [Synaptic Membrane](#), [Production of Molecular Mediator of Immune Response](#), [Maintenance of Protein Location](#)

Application Details

Application Notes: Suggested dilution Reference ICC/IF 1:100-1:1000* IHC (Formalin-fixed paraffin-embedded sections) 1:100-1:1000* Western blot 1:500-1:3000* Not tested in other applications. *Optimal dilutions/concentrations should be determined by the researcher.Suggested dilutionReferenceICC/IF1:100-1:1000* IHC (Formalin-fixed paraffin-embedded sections)1:100-1:1000* Western blot1:500-1:3000*

Comment: Positive Control: 293T , A431 , H1299 , HeLaS3 , HepG2 , Molt-4 , Raji , NIH-3T3

Restrictions: For Research Use only

Handling

Format: Liquid

Concentration: 0.7 mg/mL

Buffer: 0.1M Tris, 0.1M Glycine, 10 % Glycerol (pH 7). 0.01 % Thimerosal was added as a preservative.

Preservative: Thimerosal (Merthiolate)

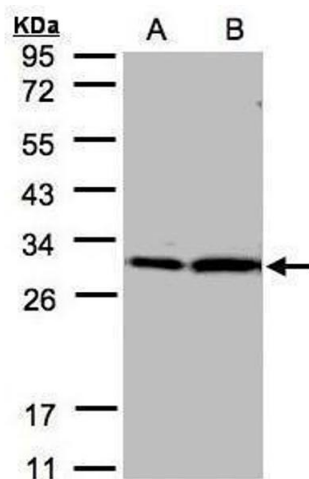
Handling

Precaution of Use: This product contains Thimerosal (Merthiolate): a POISONOUS AND HAZARDOUS SUBSTANCE which should be handled by trained staff only.

Storage: -20 °C

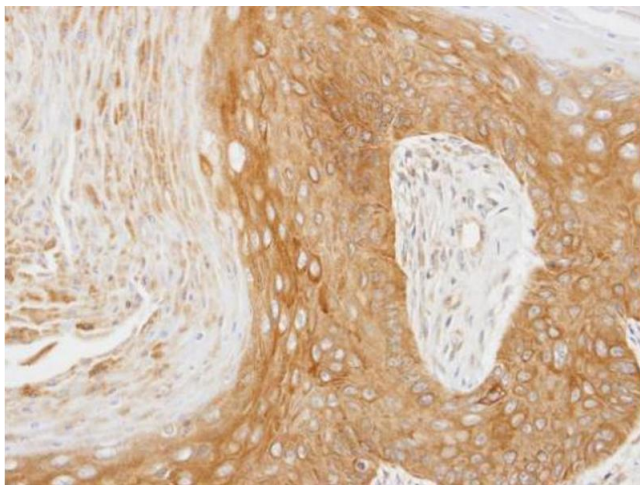
Storage Comment: Keep as concentrated solution. Aliquot and store at -20°C or below. Avoid multiple freeze-thaw cycles.

Validation report #104437 for Cleavage Under Targets and Release Using Nuclease (CUT&RUN)



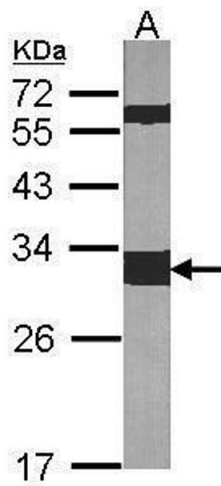
Western Blotting

Image 1. WB Image Sample(30 µg of whole cell lysate)
A:Hep G2, B:MOLT4, 12% SDS PAGE antibody diluted at 1:2000



Immunohistochemistry

Image 2. IHC-P Image Immunohistochemical analysis of paraffin-embedded Cal27 xenograft, using 14-3-3 zeta, antibody at 1:100 dilution.



Western Blotting

Image 3. WB Image Sample (30 ug of whole cell lysate)
A:NIH-3T3 12% SDS PAGE antibody diluted at 1:1000

Please check the [product details page](#) for more images. Overall 5 images are available for ABIN2854923.