

Datasheet for ABIN2854925
anti-RECQL2 antibody (Center)[Go to Product page](#)

3 Images

Overview

Quantity:	100 µL
Target:	RECQL2 (WRN)
Binding Specificity:	Center
Reactivity:	Human
Host:	Rabbit
Clonality:	Polyclonal
Conjugate:	This RECQL2 antibody is un-conjugated
Application:	Western Blotting (WB), Immunofluorescence (IF), Immunocytochemistry (ICC), Immunohistochemistry (Paraffin-embedded Sections) (IHC (p))

Product Details

Immunogen:	Recombinant protein encompassing a sequence within the center region of human WRN. The exact sequence is proprietary.
Isotype:	IgG
Characteristics:	Rabbit Polyclonal antibody to WRN (Werner syndrome, RecQ helicase-like) WRN antibody
Purification:	Purified by antigen-affinity chromatography.

Target Details

Target:	RECQL2 (WRN)
Alternative Name:	WRN (WRN Products)

Target Details

Background: This gene encodes a member of the RecQ subfamily and the DEAH (Asp-Glu-Ala-His) subfamily of DNA and RNA helicases. DNA helicases are involved in many aspects of DNA metabolism, including transcription, replication, recombination, and repair. This protein contains a nuclear localization signal in the C-terminus and shows a predominant nucleolar localization. It possesses an intrinsic 3' to 5' DNA helicase activity, and is also a 3' to 5' exonuclease. Based on interactions between this protein and Ku70/80 heterodimer in DNA end processing, this protein may be involved in the repair of double strand DNA breaks. Defects in this gene are the cause of Werner syndrome, an autosomal recessive disorder characterized by premature aging.

Cellular Localization: Nucleus , nucleolus

Molecular Weight: 162 kDa

Gene ID: 7486

Pathways: [DNA Damage Repair](#)

Application Details

Application Notes: Suggested dilution Reference ICC/IF 1:100-1:1000* IHC (Formalin-fixed paraffin-embedded sections) 1:100-1:1000* Western blot 1:500-1:3000* Not tested in other applications. *Optimal dilutions/concentrations should be determined by the researcher.Suggested dilutionReferenceICC/IF1:100-1:1000* IHC (Formalin-fixed paraffin-embedded sections)1:100-1:1000* Western blot1:500-1:3000*

Comment: Positive Control: 293T , A431

Restrictions: For Research Use only

Handling

Format: Liquid

Concentration: 1 mg/mL

Buffer: 0.1M Tris, 0.1M Glycine, 10 % Glycerol (pH 7). 0.01 % Thimerosal was added as a preservative.

Preservative: Thimerosal (Merthiolate)

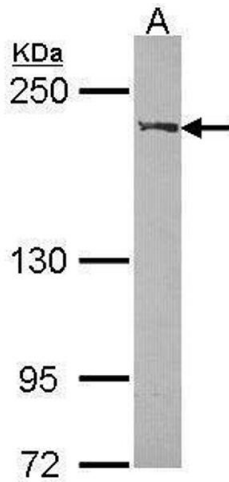
Precaution of Use: This product contains Thimerosal (Merthiolate): a POISONOUS AND HAZARDOUS SUBSTANCE which should be handled by trained staff only.

Storage: -20 °C

Handling

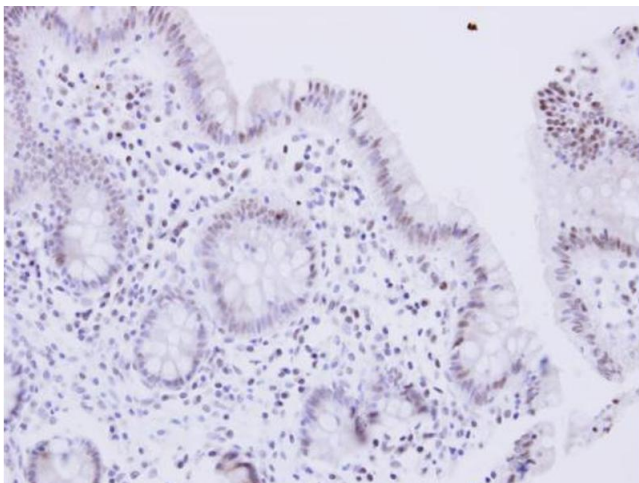
Storage Comment: Keep as concentrated solution. Aliquot and store at -20°C or below. Avoid multiple freeze-thaw cycles.

Validation report #104252 for Cleavage Under Targets and Release Using Nuclease (CUT&RUN)



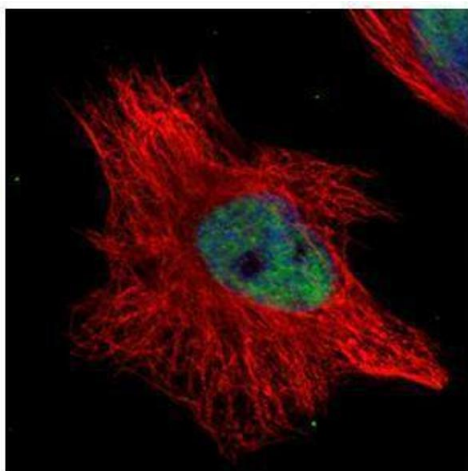
Western Blotting

Image 1. WB Image Sample (30 ug of whole cell lysate) A: A431, 5% SDS PAGE antibody diluted at 1:1000



Immunohistochemistry

Image 2. IHC-P Image WRN antibody detects WRN protein at nucleus on human normal colon by immunohistochemical analysis. Sample: Paraffin-embedded human normal colon. WRN antibody, dilution: 1:250.



Immunofluorescence

Image 3. ICC/IF Image Confocal immunofluorescence analysis (Olympus FV10i) of paraformaldehyde-fixed HeLa, using WRN, antibody (Green) at 1:500 dilution. Alpha-tubulin filaments were labeled with (Red) at 1:2500.