

Datasheet for ABIN2854928

anti-VHL antibody

8 Images

1 Publication

[Go to Product page](#)

Overview

Quantity:	100 µL
Target:	VHL
Reactivity:	Human
Host:	Rabbit
Clonality:	Polyclonal
Conjugate:	This VHL antibody is un-conjugated
Application:	Western Blotting (WB), Immunofluorescence (IF), Immunohistochemistry (Paraffin-embedded Sections) (IHC (p)), Immunoprecipitation (IP), Immunocytochemistry (ICC)

Product Details

Immunogen:	Recombinant protein encompassing a sequence within the center region of human Von Hippel Lindau. The exact sequence is proprietary.
Isotype:	IgG
Cross-Reactivity:	Human, Mouse
Characteristics:	Rabbit Polyclonal antibody to Von Hippel Lindau (von Hippel-Lindau tumor suppressor) Von Hippel Lindau antibody
Purification:	Purified by antigen-affinity chromatography.

Target Details

Target:	VHL
Alternative Name:	von Hippel-Lindau tumor suppressor (VHL Products)

Target Details

Background: Von Hippel-Lindau syndrome (VHL) is a dominantly inherited familial cancer syndrome predisposing to a variety of malignant and benign tumors. A germline mutation of this gene is the basis of familial inheritance of VHL syndrome. The protein encoded by this gene is a component of the protein complex that includes elongin B, elongin C, and cullin-2, and possesses ubiquitin ligase E3 activity. This protein is involved in the ubiquitination and degradation of hypoxia-inducible-factor (HIF), which is a transcription factor that plays a central role in the regulation of gene expression by oxygen. RNA polymerase II subunit POLR2G/RPB7 is also reported to be a target of this protein. Alternatively spliced transcript variants encoding distinct isoforms have been observed.

Cellular Localization: Isoform 1: Cytoplasm , Membrane, Peripheral membrane protein , Nucleus , Isoform 3: Cytoplasm

Molecular Weight: 24 kDa

Gene ID: 7428

UniProt: [P40337](#)

Pathways: [Tube Formation, Signaling Events mediated by VEGFR1 and VEGFR2, Ubiquitin Proteasome Pathway](#)

Application Details

Application Notes: WB: 1:500-1:10000. ICC/IF: 1:100-1:1000. IHC-P: 1:100-1:1000. Optimal dilutions/concentrations should be determined by the researcher. Not tested in other applications.

Comment: Positive Control: Myc-DDK-tagged VHL-transfected 293T
Validation: Overexpression

Restrictions: For Research Use only

Handling

Format: Liquid

Concentration: 1.27 mg/mL

Buffer: 1XPBS pH 7, 20 % Glycerol, 0.025 % ProClin 300

Preservative: ProClin

Precaution of Use: This product contains ProClin: a POISONOUS AND HAZARDOUS SUBSTANCE which should be

Handling

handled by trained staff only.

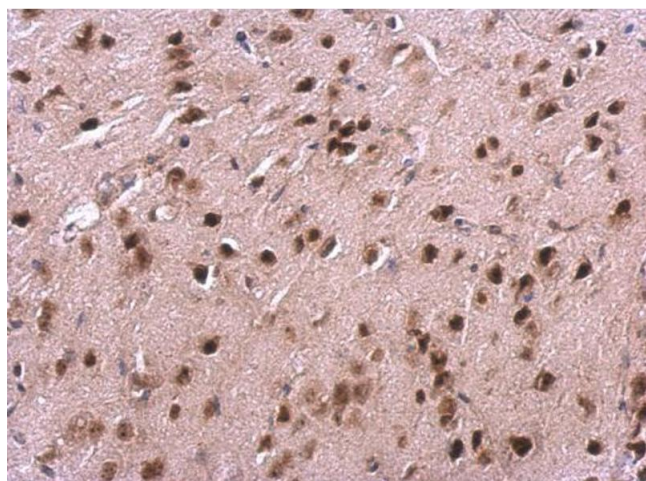
Storage: 4 °C,-20 °C

Storage Comment: Store as concentrated solution. Centrifuge briefly prior to opening vial. For short-term storage (1-2 weeks), store at 4°C. For long-term storage, aliquot and store at -20°C or below. Avoid multiple freeze-thaw cycles.

Publications

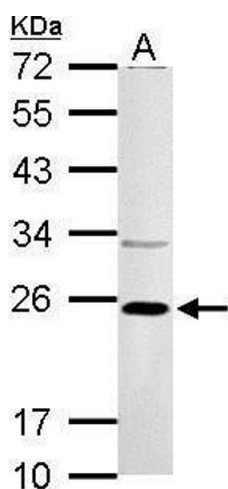
Product cited in: Rodriguez-Gil, Hu, Greer: "Dishevelled proteins are associated with olfactory sensory neuron presynaptic terminals." in: **PLoS ONE**, Vol. 8, Issue 2, pp. e56561, (2013) ([PubMed](#)).

Validation report #104437 for Cleavage Under Targets and Release Using Nuclease (CUT&RUN)



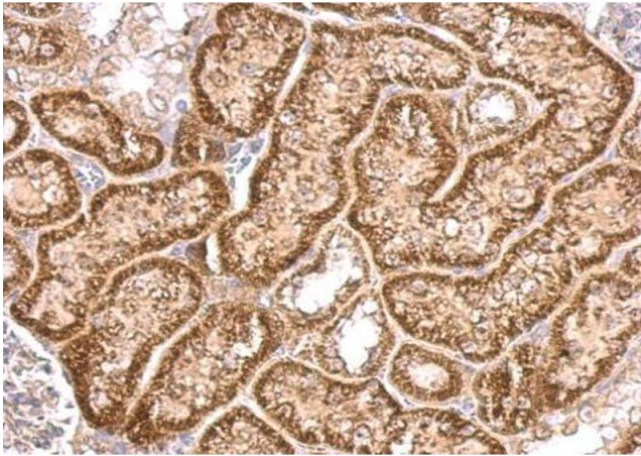
Immunohistochemistry

Image 1. IHC-P Image VHL antibody detects VHL protein at cytosol and nucleus on mouse fore brain by immunohistochemical analysis. Sample: Paraffin-embedded mouse fore brain. VHL antibody , dilution: 1:500.



Western Blotting

Image 2. WB Image VHL antibody detects VHL protein by Western blot analysis. A. 30 µg Neuro2A whole cell lysate/extract B. 30 µg GL261 whole cell lysate/extract 12 % SDS-PAGE VHL antibody , dilution: 1:1000



Immunohistochemistry

Image 3. IHC-P Image VHL antibody detects VHL protein at cytosol on mouse kidney by immunohistochemical analysis. Sample: Paraffin-embedded mouse kidney. VHL antibody , dilution: 1:500.

Please check the [product details page](#) for more images. Overall 8 images are available for ABIN2854928.