



## Datasheet for ABIN2854929 anti-VCP antibody (C-Term)



[Go to Product page](#)

8 Images

1 Publication

### Overview

Quantity:	100 µL
Target:	VCP
Binding Specificity:	C-Term
Reactivity:	Human
Host:	Rabbit
Clonality:	Polyclonal
Conjugate:	This VCP antibody is un-conjugated
Application:	Western Blotting (WB), Immunofluorescence (IF), Immunoprecipitation (IP), Immunohistochemistry (Paraffin-embedded Sections) (IHC (p)), Immunocytochemistry (ICC), Immunohistochemistry (Frozen Sections) (IHC (fro)), Immunohistochemistry (Whole Mount) (IHC (wm))

### Product Details

Immunogen:	Recombinant protein encompassing a sequence within the C-terminus region of human VCP. The exact sequence is proprietary.
Isotype:	IgG
Specificity:	Knockdown/Knockout validation was supported by customer review data.
Cross-Reactivity:	Human, Mouse, Rat, Zebrafish (Danio rerio)
Characteristics:	Rabbit Polyclonal antibody to VCP (valosin containing protein) VCP antibody
Purification:	Purified by antigen-affinity chromatography.

## Product Details

---

Grade: KO Validated

## Target Details

---

Target: VCP

Alternative Name: valosin containing protein ([VCP Products](#))

Background: The protein encoded by this gene is a member of a family that includes putative ATP-binding proteins involved in vesicle transport and fusion, 26S proteasome function, and assembly of peroxisomes. This protein, as a structural protein, is associated with clathrin, and heat-shock protein Hsc70, to form a complex. It has been implicated in a number of cellular events that are regulated during mitosis, including homotypic membrane fusion, spindle pole body function, and ubiquitin-dependent protein degradation.

Cellular Localization: Cytoplasm , cytosol , Nucleus

Molecular Weight: 89 kDa

Gene ID: 7415

UniProt: [P55072](#)

Pathways: [ER-Nucleus Signaling](#), [Positive Regulation of Endopeptidase Activity](#), [Ubiquitin Proteasome Pathway](#)

## Application Details

---

Application Notes: WB: 1:500-1:10000. ICC/IF: 1:100-1:1000. IHC-P: 1:100-1:1000. IHC-Fr: 1:100-1:1000. IP: 1:100-1:500. Optimal dilutions/concentrations should be determined by the researcher. Not tested in other applications.

Comment: Positive Control: Mouse brain , Rat brain

Validation: KO/KD, Orthogonal

Restrictions: For Research Use only

## Handling

---

Format: Liquid

Concentration: 1 mg/mL

Buffer: 1XPBS ( pH 7), 20 % Glycerol, 0.025 % ProClin 300

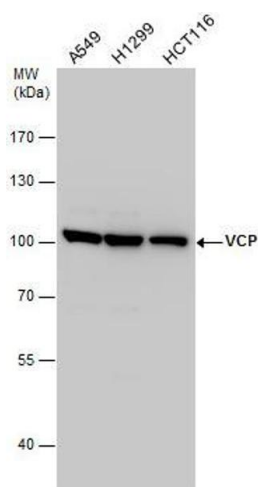
## Handling

Preservative:	ProClin
Precaution of Use:	This product contains ProClin: a POISONOUS AND HAZARDOUS SUBSTANCE which should be handled by trained staff only.
Storage:	4 °C,-20 °C
Storage Comment:	Store as concentrated solution. Centrifuge briefly prior to opening vial. For short-term storage (1-2 weeks), store at 4°C. For long-term storage, aliquot and store at -20°C or below. Avoid multiple freeze-thaw cycles.

## Publications

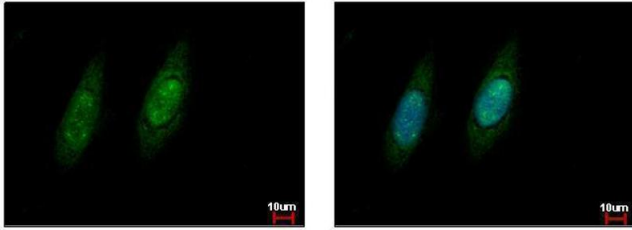
Product cited in:	Sarin, Engel, Rothweiler, Cinatl, Michaelis, Frötschl, Fröhlich, Kalayda: "Key Players of Cisplatin Resistance: Towards a Systems Pharmacology Approach." in: <b>International journal of molecular sciences</b> , Vol. 19, Issue 3, (2018) ( <a href="#">PubMed</a> ).
-------------------	---

## Images



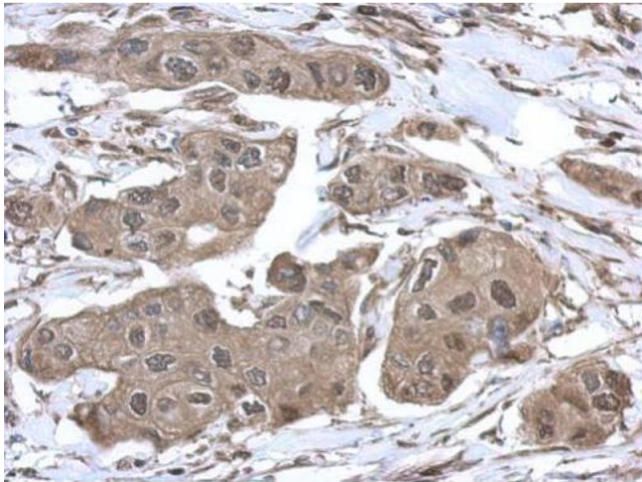
### Western Blotting

**Image 1.** WB Image VCP antibody detects VCP protein by western blot analysis. Various whole cell extracts (30 µg) were separated by 7.5% SDS-PAGE, and the membrane was blotted with VCP antibody, diluted by 1:2000.



### Immunofluorescence

**Image 2.** ICC/IF Image VCP antibody detects VCP protein at cytoplasm and nucleus by immunofluorescent analysis. Sample: HeLa cells were fixed in ice-cold MeOH for 5 min. Green: VCP protein stained by VCP antibody , diluted at 1:500. Blue: Hoechst 33343 staining.



### Immunohistochemistry

**Image 3.** IHC-P Image Immunohistochemical analysis of paraffin-embedded human breast cancer, using VCP, antibody at 1:500 dilution.

Please check the [product details page](#) for more images. Overall 8 images are available for ABIN2854929.