

Datasheet for ABIN2854930  
**anti-ube3a antibody**



[Go to Product page](#)

2 Images

Overview

Quantity:	100 µL
Target:	ube3a
Reactivity:	Human
Host:	Rabbit
Clonality:	Polyclonal
Conjugate:	This ube3a antibody is un-conjugated
Application:	Immunofluorescence (IF), Immunohistochemistry (Paraffin-embedded Sections) (IHC (p)), Immunocytochemistry (ICC)

Product Details

Immunogen:	Recombinant protein encompassing a sequence within the center region of human UBE3A. The exact sequence is proprietary.
Isotype:	IgG
Cross-Reactivity:	Human, Mouse, Rat
Characteristics:	Rabbit Polyclonal antibody to UBE3A (ubiquitin protein ligase E3A) UBE3A antibody
Purification:	Purified by antigen-affinity chromatography.

Target Details

Target:	ube3a
Alternative Name:	ubiquitin protein ligase E3A ( <a href="#">ube3a Products</a> )

## Target Details

---

**Background:** This gene encodes an E3 ubiquitin-protein ligase, part of the ubiquitin protein degradation system. This imprinted gene is maternally expressed in brain and biallelically expressed in other tissues. Maternally inherited deletion of this gene causes Angelman Syndrome, characterized by severe motor and intellectual retardation, ataxia, hypotonia, epilepsy, absence of speech, and characteristic facies. The protein also interacts with the E6 protein of human papillomavirus types 16 and 18, resulting in ubiquitination and proteolysis of tumor protein p53. Alternative splicing of this gene results in three transcript variants encoding three isoforms with different N-termini. Additional transcript variants have been described, but their full length nature has not been determined.

Cellular Localization: Nucleus

---

**Molecular Weight:** 100 kDa

---

**Gene ID:** 7337

---

**UniProt:** [Q05086](#)

---

**Pathways:** [Intracellular Steroid Hormone Receptor Signaling Pathway](#)

## Application Details

---

**Application Notes:** ICC/IF: 1:100-1:1000. IHC-P: 1:100-1:1000. Optimal dilutions/concentrations should be determined by the researcher. Not tested in other applications.

---

**Restrictions:** For Research Use only

## Handling

---

**Format:** Liquid

---

**Concentration:** 1.26 mg/mL

---

**Buffer:** 1XPBS pH 7, 20 % Glycerol, 0.025 % ProClin 300

---

**Preservative:** ProClin

---

**Precaution of Use:** This product contains ProClin: a POISONOUS AND HAZARDOUS SUBSTANCE which should be handled by trained staff only.

---

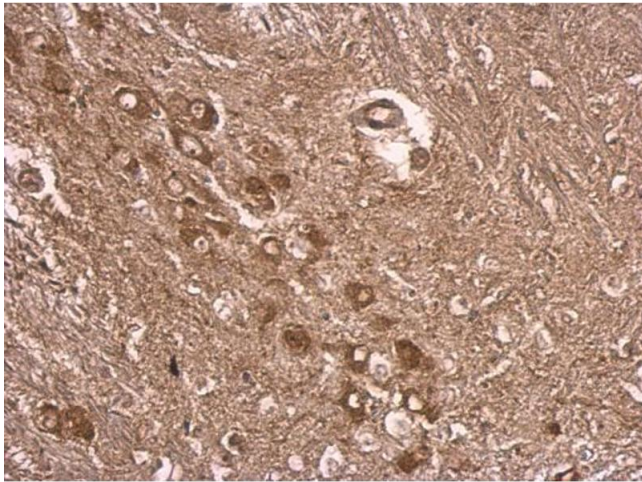
**Storage:** 4 °C,-20 °C

---

**Storage Comment:** Store as concentrated solution. Centrifuge briefly prior to opening vial. For short-term storage (1-2 weeks), store at 4°C. For long-term storage, aliquot and store at -20°C or below. Avoid

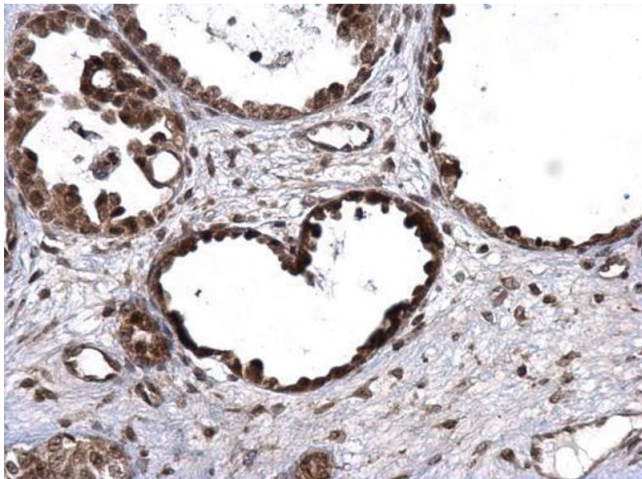
multiple freeze-thaw cycles.

Validation report #104339 for Multiplex Immunohistochemistry (mIHC)



**Immunohistochemistry**

**Image 1.** IHC-P Image UBE3A antibody detects UBE3A protein at cytosol on mouse middle brain by immunohistochemical analysis. Sample: Paraffin-embedded mouse middle brain. UBE3A antibody , dilution: 1:500.



**Immunohistochemistry**

**Image 2.** IHC-P Image UBE3A antibody detects UBE3A protein at nucleus on human ovarian carcinoma by immunohistochemical analysis. Sample: Paraffin-embedded human ovarian carcinoma. UBE3A antibody , dilution: 1:500.