

Datasheet for ABIN2854931  
**anti-UCHL1 antibody (C-Term)**



[Go to Product page](#)

4 Images

## Overview

Quantity:	100 µL
Target:	UCHL1
Binding Specificity:	C-Term
Reactivity:	Human
Host:	Rabbit
Clonality:	Polyclonal
Conjugate:	This UCHL1 antibody is un-conjugated
Application:	Western Blotting (WB), Immunohistochemistry (Paraffin-embedded Sections) (IHC (p)), Immunohistochemistry (Frozen Sections) (IHC (fro))

## Product Details

Immunogen:	Recombinant protein encompassing a sequence within the center region of human PGP9.5. The exact sequence is proprietary.
Isotype:	IgG
Cross-Reactivity:	Human, Mouse, Rat
Characteristics:	Rabbit Polyclonal antibody to PGP9.5 (ubiquitin carboxyl-terminal esterase L1 (ubiquitin thiolesterase)) PGP9.5 antibody
Purification:	Purified by antigen-affinity chromatography.

## Target Details

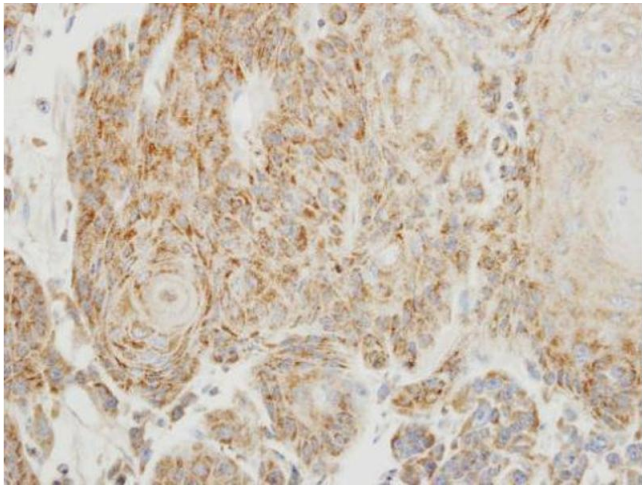
Target:	UCHL1
Alternative Name:	ubiquitin hydrolase L1 ( <a href="#">UCHL1 Products</a> )
Background:	<p>UCHL1 is a member of a gene family whose products hydrolyze small C-terminal adducts of ubiquitin to generate the ubiquitin monomer. Expression of UCHL1 is highly specific to neurons and to cells of the diffuse neuroendocrine system and their tumors. It is present in all neurons (Doran et al., 1983 [PubMed 6343558]).[supplied by OMIM]</p> <p>Cellular Localization: Cytoplasm</p>
Molecular Weight:	25 kDa
Gene ID:	7345
UniProt:	<a href="#">P09936</a>
Pathways:	<a href="#">Feeding Behaviour</a>

## Application Details

Application Notes:	WB: 1:500-1:10000. IHC-P: 1:100-1:1000. IHC-Fr: 1:100-1:1000. Optimal dilutions/concentrations should be determined by the researcher. Not tested in other applications.
Comment:	Positive Control: Mouse brain , rat brain
Restrictions:	For Research Use only

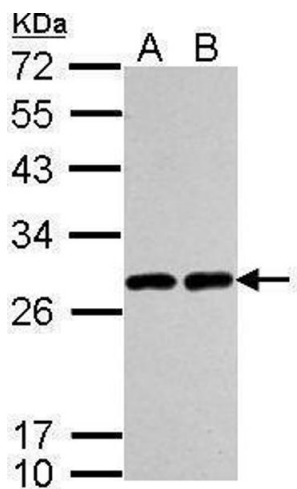
## Handling

Format:	Liquid
Concentration:	0.56 mg/mL
Buffer:	0.1M Tris-Glycine ( pH 7), 10 % Glycerol, 0.01 % Thimerosal
Preservative:	Thimerosal (Merthiolate)
Precaution of Use:	This product contains Thimerosal (Merthiolate): a POISONOUS AND HAZARDOUS SUBSTANCE which should be handled by trained staff only.
Storage:	4 °C,-20 °C
Storage Comment:	Store as concentrated solution. Centrifuge briefly prior to opening vial. For short-term storage (1-2 weeks), store at 4°C. For long-term storage, aliquot and store at -20°C or below. Avoid multiple freeze-thaw cycles.



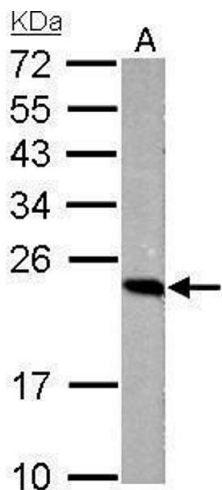
#### Immunohistochemistry

**Image 1.** IHC-P Image Immunohistochemical analysis of paraffin-embedded human oral cancer, using PGP9.5, antibody at 1:100 dilution.



#### Western Blotting

**Image 2.** WB Image Sample (30 ug of whole cell lysate) A: A549 B: H1299 12% SDS PAGE antibody diluted at 1:5000



#### Western Blotting

**Image 3.** WB Image PGP9.5 antibody detects UCHL1 protein by Western blot analysis. A. 50 µg rat brain lysate/extract 12 % SDS-PAGE PGP9.5 antibody , dilution: 1:1000

Please check the [product details page](#) for more images. Overall 4 images are available for ABIN2854931.