

Datasheet for ABIN2854941

anti-Lipoprotein Lipase antibody

3 Images

[Go to Product page](#)

Overview

Quantity:	100 µL
Target:	Lipoprotein Lipase (LPL)
Reactivity:	Human
Host:	Rabbit
Clonality:	Polyclonal
Conjugate:	This Lipoprotein Lipase antibody is un-conjugated
Application:	Western Blotting (WB), Immunocytochemistry (ICC), Immunofluorescence (IF), Immunohistochemistry (Paraffin-embedded Sections) (IHC (p))

Product Details

Immunogen:	Recombinant protein encompassing a sequence within the center region of human LPL. The exact sequence is proprietary.
Isotype:	IgG
Cross-Reactivity:	Chicken, Human, Mouse, Sheep
Characteristics:	Rabbit Polyclonal antibody to LPL (lipoprotein lipase) LPL antibody
Purification:	Purified by antigen-affinity chromatography.

Target Details

Target:	Lipoprotein Lipase (LPL)
Alternative Name:	lipoprotein lipase (LPL Products)

Target Details

Background: LPL encodes lipoprotein lipase, which is expressed in heart, muscle, and adipose tissue. LPL functions as a homodimer, and has the dual functions of triglyceride hydrolase and ligand/bridging factor for receptor-mediated lipoprotein uptake. Severe mutations that cause LPL deficiency result in type I hyperlipoproteinemia, while less extreme mutations in LPL are linked to many disorders of lipoprotein metabolism.

Cellular Localization: Cell membrane, Lipid-anchor , GPI-anchor , Secreted

Molecular Weight: 53 kDa

Gene ID: 4023

UniProt: [P06858](#)

Pathways: [Lipid Metabolism](#)

Application Details

Application Notes: WB: 1:500-1:3000. ICC/IF: 1:100-1:1000. Optimal dilutions/concentrations should be determined by the researcher. Not tested in other applications.

Restrictions: For Research Use only

Handling

Format: Liquid

Concentration: 0.11 mg/mL

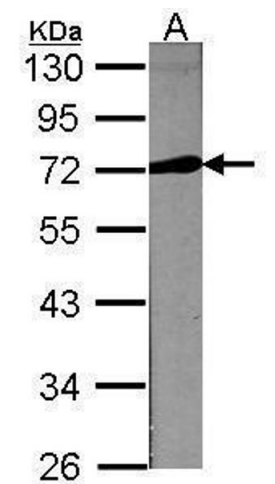
Buffer: 1XPBS (pH 7), 1 % BSA, 20 % Glycerol, 0.025 % ProClin 300

Preservative: ProClin

Precaution of Use: This product contains ProClin: a POISONOUS AND HAZARDOUS SUBSTANCE which should be handled by trained staff only.

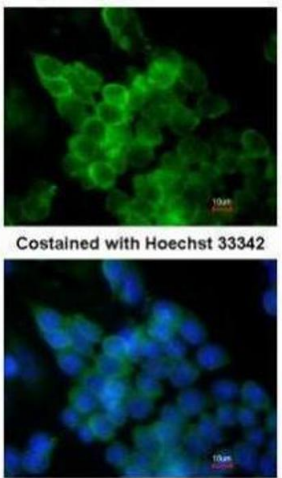
Storage: 4 °C, -20 °C

Storage Comment: Store as concentrated solution. Centrifuge briefly prior to opening vial. For short-term storage (1-2 weeks), store at 4°C. For long-term storage, aliquot and store at -20°C or below. Avoid multiple freeze-thaw cycles.



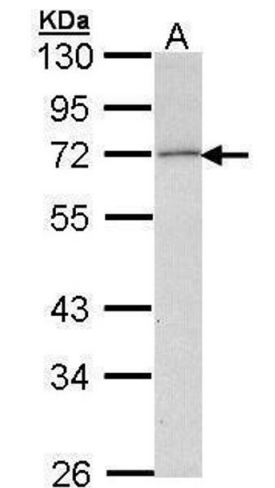
Western Blotting

Image 1. WB Image Sample (30 ug of whole cell lysate)
A:NIH-3T3 10% SDS PAGE antibody diluted at 1:1000



Immunofluorescence

Image 2. ICC/IF Image Immunofluorescence analysis of paraformaldehyde-fixed mouse ESC D3, using LPL, antibody at 1:200 dilution.



Western Blotting

Image 3. WB Image Sample (30 ug of whole cell lysate) A:
Molt-4 , 10% SDS PAGE antibody diluted at 1:1000