

Datasheet for ABIN2854943
anti-Lamin A/C antibody

8 Images

4 Publications

[Go to Product page](#)

Overview

Quantity:	100 µL
Target:	Lamin A/C (LMNA)
Reactivity:	Human
Host:	Rabbit
Clonality:	Polyclonal
Conjugate:	This Lamin A/C antibody is un-conjugated
Application:	Western Blotting (WB), Immunofluorescence (IF), Immunoprecipitation (IP), Immunohistochemistry (Paraffin-embedded Sections) (IHC (p)), Immunocytochemistry (ICC)

Product Details

Immunogen:	Recombinant protein encompassing a sequence within the center region of human Lamin A + C. The exact sequence is proprietary.
Isotype:	IgG
Cross-Reactivity:	Human, Mouse, Rat
Characteristics:	Rabbit Polyclonal antibody to Lamin A + C Lamin A + C antibody
Purification:	Purified by antigen-affinity chromatography.
Grade:	KO Validated

Target Details

Target:	Lamin A/C (LMNA)
---------	------------------

Target Details

Alternative Name:	lamin A/C (LMNA Products)
Background:	<p>The nuclear lamina consists of a two-dimensional matrix of proteins located next to the inner nuclear membrane. The lamin family of proteins make up the matrix and are highly conserved in evolution. During mitosis, the lamina matrix is reversibly disassembled as the lamin proteins are phosphorylated. Lamin proteins are thought to be involved in nuclear stability, chromatin structure and gene expression. Vertebrate lamins consist of two types, A and B. Through alternate splicing, this gene encodes three type A lamin isoforms. Mutations in this gene lead to several diseases: Emery-Dreifuss muscular dystrophy, familial partial lipodystrophy, limb girdle muscular dystrophy, dilated cardiomyopathy, Charcot-Marie-Tooth disease, and Hutchinson-Gilford progeria syndrome.</p> <p>Cellular Localization: Nucleus</p>
Molecular Weight:	74 kDa
Gene ID:	4000
UniProt:	P02545
Pathways:	Apoptosis , Caspase Cascade in Apoptosis , ER-Nucleus Signaling , Protein targeting to Nucleus

Application Details

Application Notes:	WB: 1:500-1:3000. ICC/IF: 1:100-1:1000. IHC-P: 1:100-1:1000. IP: 1:100-1:500. Optimal dilutions/concentrations should be determined by the researcher. Not tested in other applications.
Comment:	Positive Control: NIH-3T3 Validation: Comparison, KO/KD, Orthogonal
Restrictions:	For Research Use only

Handling

Format:	Liquid
Concentration:	0.73 mg/mL
Buffer:	1XPBS (pH 7), 20 % Glycerol, 0.025 % ProClin 300
Preservative:	ProClin
Precaution of Use:	This product contains ProClin: a POISONOUS AND HAZARDOUS SUBSTANCE which should be

Handling

handled by trained staff only.

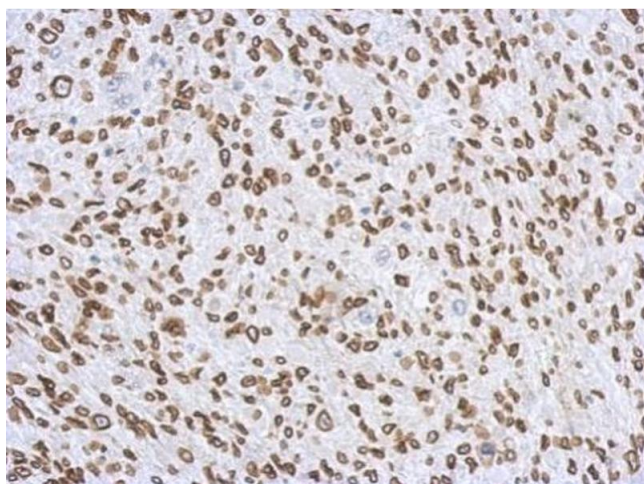
Storage: 4 °C,-20 °C

Storage Comment: Store as concentrated solution. Centrifuge briefly prior to opening vial. For short-term storage (1-2 weeks), store at 4°C. For long-term storage, aliquot and store at -20°C or below. Avoid multiple freeze-thaw cycles.

Publications

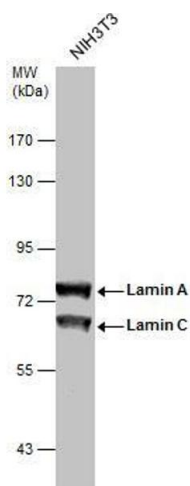
Product cited in: Wu, Yen, Kou, Wu: "Luteolin and Apigenin Attenuate 4-Hydroxy-2-Nonenal-Mediated Cell Death through Modulation of UPR, Nrf2-ARE and MAPK Pathways in PC12 Cells." in: **PLoS ONE**, Vol. 10, Issue 6, pp. e0130599, (2016) ([PubMed](#)).

Validation report #104426 for Immunohistochemistry (IHC)



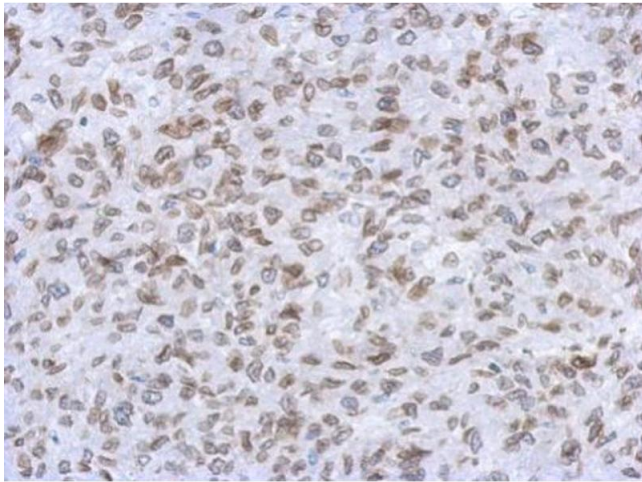
Immunohistochemistry

Image 1. IHC-P Image Immunohistochemical analysis of paraffin-embedded C2C12 xenograft, using Lamin A + C, antibody at 1:500 dilution.



Western Blotting

Image 2. WB Image Sample (30 ug of whole cell lysate) A: NIH-3T3 7.5% SDS PAGE antibody diluted at 1:1000



Immunohistochemistry

Image 3. IHC-P Image Immunohistochemical analysis of paraffin-embedded RT2 xenograft, using Lamin A + C, antibody at 1:500 dilution.

Please check the [product details page](#) for more images. Overall 8 images are available for ABIN2854943.