

Datasheet for ABIN2854945  
**anti-Insulin Receptor antibody (C-Term)**

## 4 Images

[Go to Product page](#)

## Overview

Quantity:	100 µL
Target:	Insulin Receptor (INSR)
Binding Specificity:	C-Term
Reactivity:	Human
Host:	Rabbit
Clonality:	Polyclonal
Conjugate:	This Insulin Receptor antibody is un-conjugated
Application:	Western Blotting (WB), Immunocytochemistry (ICC), Immunohistochemistry (Paraffin-embedded Sections) (IHC (p)), Immunofluorescence (IF)

## Product Details

Immunogen:	Recombinant protein encompassing a sequence within the C-terminus region of human Insulin Receptor. The exact sequence is proprietary.
Isotype:	IgG
Cross-Reactivity:	Human, Mouse, Rat, Zebrafish (Danio rerio)
Characteristics:	Rabbit Polyclonal antibody to Insulin Receptor (insulin receptor) Insulin Receptor antibody
Purification:	Purified by antigen-affinity chromatography.
Grade:	KO Validated

## Target Details

Target:	Insulin Receptor (INSR)
Alternative Name:	insulin receptor ( <a href="#">INSR Products</a> )
Background:	<p>After removal of the precursor signal peptide, the insulin receptor precursor is post-translationally cleaved into two chains (alpha and beta) that are covalently linked. Binding of insulin to the insulin receptor (INSR) stimulates glucose uptake. Two transcript variants encoding different isoforms have been found for this gene.</p> <p>Cellular Localization: Membrane, Single-pass type I membrane protein</p>
Molecular Weight:	156 kDa
Gene ID:	3643
UniProt:	<a href="#">P06213</a>
Pathways:	<a href="#">NF-kappaB Signaling</a> , <a href="#">RTK Signaling</a> , <a href="#">AMPK Signaling</a> , <a href="#">Carbohydrate Homeostasis</a> , <a href="#">Regulation of Cell Size</a> , <a href="#">Regulation of Carbohydrate Metabolic Process</a> , <a href="#">Growth Factor Binding</a> , <a href="#">Negative Regulation of Transporter Activity</a>

## Application Details

Application Notes:	WB: 1:500-1:3000. IHC-P: 1:100-1:1000. Optimal dilutions/concentrations should be determined by the researcher. Not tested in other applications.
Comment:	Positive Control: NIH-3T3 , PC-12 , rat liver Validation: KO/KD
Restrictions:	For Research Use only

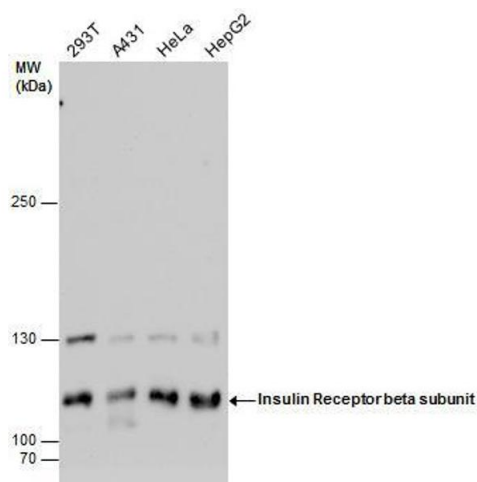
## Handling

Format:	Liquid
Concentration:	1.31 mg/mL
Buffer:	1XPBS pH 7, 20 % Glycerol, 0.025 % ProClin 300
Preservative:	ProClin
Precaution of Use:	This product contains ProClin: a POISONOUS AND HAZARDOUS SUBSTANCE which should be handled by trained staff only.
Storage:	4 °C, -20 °C

## Handling

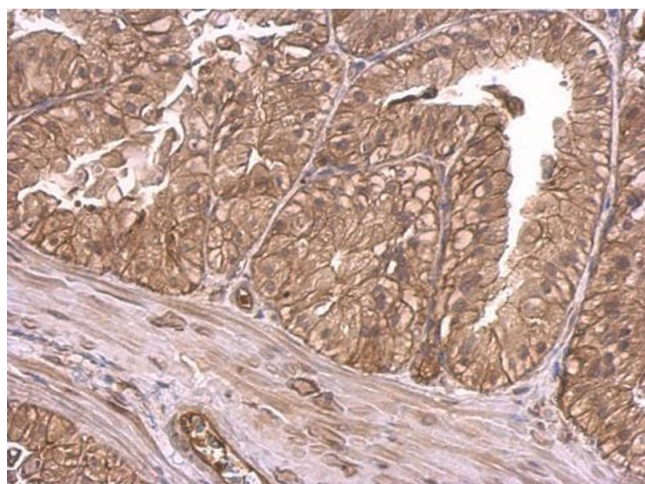
**Storage Comment:** Store as concentrated solution. Centrifuge briefly prior to opening vial. For short-term storage (1-2 weeks), store at 4°C. For long-term storage, aliquot and store at -20°C or below. Avoid multiple freeze-thaw cycles.

## Images



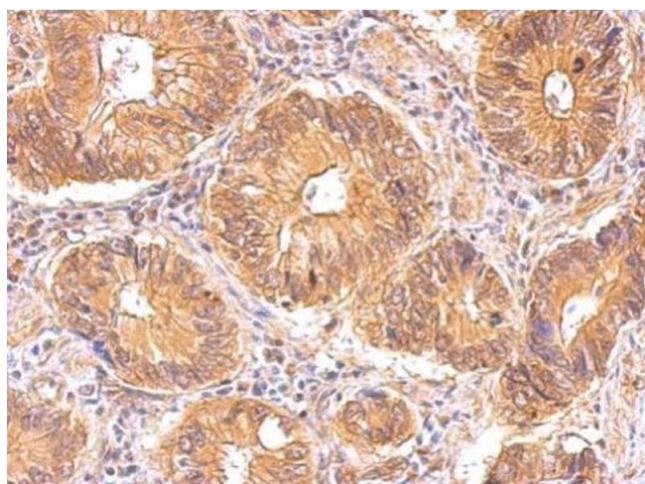
### Western Blotting

**Image 1.** WB Image Insulin Receptor beta subunit antibody detects Insulin Receptor beta subunit protein by western blot analysis. Various whole cell extracts (30 µg) were separated by 5% SDS-PAGE, and the membrane was blotted with Insulin Receptor beta subunit antibody, diluted by 1:1000.



### Immunohistochemistry

**Image 2.** IHC-P Image Insulin Receptor antibody detects Insulin Receptor protein at membrane on mouse prostate by immunohistochemical analysis. Sample: Paraffin-embedded mouse prostate. Insulin Receptor antibody, dilution: 1:500.



### Immunohistochemistry

**Image 3.** IHC-P Image Insulin Receptor antibody detects INSR protein at cytosol on human gastric cancer by immunohistochemical analysis. Sample: Paraffin-embedded gastric cancer. Insulin Receptor antibody, dilution: 1:500.

Please check the [product details page](#) for more images. Overall 4 images are available for ABIN2854945.