

Datasheet for ABIN2854951  
**anti-HSP27 antibody (Center)**[Go to Product page](#)

5 Images

2 Publications

## Overview

Quantity:	100 µL
Target:	HSP27 (HSPB1)
Binding Specificity:	Center
Reactivity:	Human, Rat, Mouse
Host:	Rabbit
Clonality:	Polyclonal
Conjugate:	This HSP27 antibody is un-conjugated
Application:	Western Blotting (WB), Immunofluorescence (IF), Flow Cytometry (FACS), Immunohistochemistry (Paraffin-embedded Sections) (IHC (p)), Immunoprecipitation (IP), Immunocytochemistry (ICC)

## Product Details

Immunogen:	Recombinant protein encompassing a sequence within the center region of human HSP27. The exact sequence is proprietary.
Isotype:	IgG
Cross-Reactivity:	Rhesus Monkey
Cross-Reactivity (Details):	Rhesus Monkey (100 %)
Characteristics:	Rabbit Polyclonal antibody to HSP27 (heat shock 27 kDa protein 1) HSP27 antibody
Purification:	Affinity purified by Protein A.

## Target Details

Target:	HSP27 (HSPB1)
Alternative Name:	HSP27 ( <a href="#">HSPB1 Products</a> )
Background:	<p>The protein encoded by this gene is induced by environmental stress and developmental changes. The encoded protein is involved in stress resistance and actin organization and translocates from the cytoplasm to the nucleus upon stress induction. Defects in this gene are a cause of Charcot-Marie-Tooth disease type 2F (CMT2F) and distal hereditary motor neuropathy (dHMN).</p> <p>Cellular Localization: Cytoplasm , Nucleus , Spindle</p>
Molecular Weight:	23 kDa
Gene ID:	3315
Pathways:	<a href="#">MAPK Signaling</a> , <a href="#">Regulation of Actin Filament Polymerization</a> , <a href="#">Signaling Events mediated by VEGFR1 and VEGFR2</a> , <a href="#">Negative Regulation of intrinsic apoptotic Signaling</a> , <a href="#">VEGF Signaling</a>

## Application Details

Application Notes:	<p>Suggested dilution Reference Flow cytometry/FACS Assay-dependent dilution ICC/IF 1:100-1:1000* IHC (Formalin-fixed paraffin-embedded sections) 1:100-1:1000* Immunoprecipitation 1:100-1:1000* Western blot 1:500-1:10000* Not tested in other applications. *Optimal dilutions/concentrations should be determined by the researcher.Suggested dilutionReferenceFlow cytometry/FACSSassay-dependent dilution ICC/IF1:100-1:1000* IHC (Formalin-fixed paraffin-embedded sections)1:100-1:1000* Immunoprecipitation1:100-1:1000* Western blot1:500-1:10000*</p>
Comment:	Positive Control: A431 , HeLa , mouse liver , *HT29
Restrictions:	For Research Use only

## Handling

Format:	Liquid
Concentration:	3.23 mg/mL
Buffer:	1XPBS, 20 % Glycerol ( pH 7). 0.025 % ProClin 300 was added as a preservative.
Preservative:	ProClin
Precaution of Use:	This product contains ProClin: a POISONOUS AND HAZARDOUS SUBSTANCE which should be

Handling

handled by trained staff only.

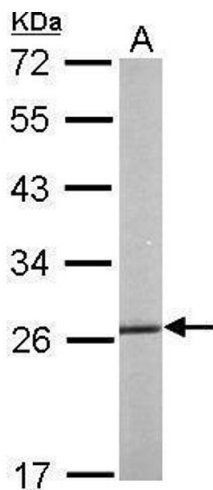
Storage: -20 °C

Storage Comment: Keep as concentrated solution. Aliquot and store at -20°C or below. Avoid multiple freeze-thaw cycles.

Publications

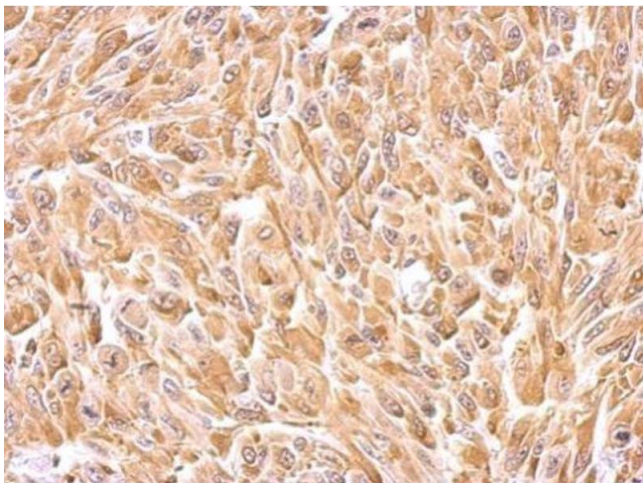
Product cited in: Hinderer, Sudrow, Schneider, Holeiter, Layland, Seifert, Schenke-Layland: "Surface functionalization of electrospun scaffolds using recombinant human decorin attracts circulating endothelial progenitor cells." in: **Scientific reports**, Vol. 8, Issue 1, pp. 110, (2018) ([PubMed](#)).

Images



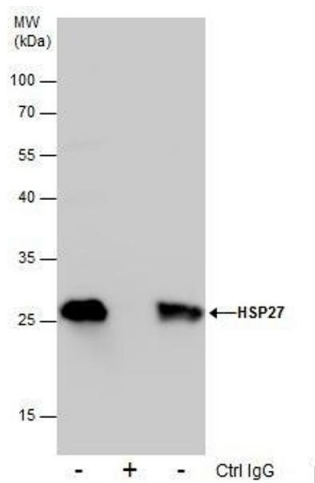
Western Blotting

**Image 1.** WB Image Sample (50 ug of whole cell lysate) A: mouse liver 12% SDS PAGE antibody diluted at 1:1000



Immunohistochemistry

**Image 2.** IHC-P Image HSP27 antibody detects HSPB1 protein at cytosol on U87 xenograft by immunohistochemical analysis. Sample: Paraffin-embedded U87 xenograft. HSP27 antibody , dilution: 1:500.



### Immunoprecipitation

**Image 3.** IP Image Immunoprecipitation of HSP27 protein from HeLa whole cell extracts using 5  $\mu$ g of HSP27 antibody. Western blot analysis was performed using HSP27 antibody, EasyBlot anti-Rabbit IgG was used as a secondary reagent.

Please check the [product details page](#) for more images. Overall 5 images are available for ABIN2854951.