

Datasheet for ABIN2854954  
**anti-HLAG antibody**



[Go to Product page](#)

1 Image

## Overview

Quantity:	100 µL
Target:	HLAG
Reactivity:	Human
Host:	Rabbit
Clonality:	Polyclonal
Conjugate:	This HLAG antibody is un-conjugated
Application:	Western Blotting (WB)

## Product Details

Immunogen:	Recombinant protein encompassing a sequence within the center region of human HLA-G. The exact sequence is proprietary.
Isotype:	IgG
Cross-Reactivity:	Human
Characteristics:	Rabbit polyclonal antibody to HLA-G (major histocompatibility complex, class I, G) HLA-G antibody [N1C3]
Purification:	Purified by antigen-affinity chromatography.

## Target Details

Target:	HLAG
Alternative Name:	major histocompatibility complex, class I, G ( <a href="#">HLAG Products</a> )

## Target Details

Background:	HLA-G belongs to the HLA class I heavy chain paralogues. This class I molecule is a heterodimer consisting of a heavy chain and a light chain (beta-2 microglobulin). The heavy chain is anchored in the membrane. HLA-G is expressed on fetal derived placental cells. The heavy chain is approximately 45 kDa and its gene contains 8 exons. Exon one encodes the leader peptide, exons 2 and 3 encode the alpha1 and alpha2 domain, which both bind the peptide, exon 4 encodes the alpha3 domain, exon 5 encodes the transmembrane region, and exon 6 encodes the cytoplasmic tail.  Cellular Localization: Membrane, Single-pass type I membrane protein
Molecular Weight:	38 kDa
Gene ID:	3135
UniProt:	<a href="#">P17693</a>
Pathways:	<a href="#">Regulation of Leukocyte Mediated Immunity</a> , <a href="#">Positive Regulation of Immune Effector Process</a> , <a href="#">Cancer Immune Checkpoints</a> , <a href="#">Human Leukocyte Antigen (HLA) in Adaptive Immune Response</a>

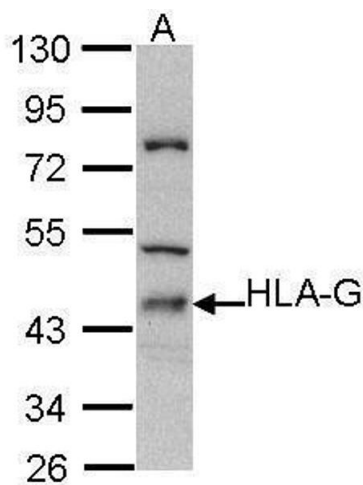
## Application Details

Application Notes:	WB: 1:500-1:3000. Optimal dilutions/concentrations should be determined by the researcher. Not tested in other applications.
Comment:	Positive Control: Molt-4
Restrictions:	For Research Use only

## Handling

Format:	Liquid
Concentration:	0.83 mg/mL
Buffer:	1XPBS ( pH 7), 10 % Glycerol, 0.01 % Thimerosal
Preservative:	Thimerosal (Merthiolate)
Precaution of Use:	This product contains Thimerosal (Merthiolate): a POISONOUS AND HAZARDOUS SUBSTANCE which should be handled by trained staff only.
Storage:	4 °C,-20 °C
Storage Comment:	Store as concentrated solution. Centrifuge briefly prior to opening vial. For short-term storage (1-2 weeks), store at 4°C. For long-term storage, aliquot and store at -20°C or below. Avoid

multiple freeze-thaw cycles.



**Western Blotting**

**Image 1.** WB Image Sample (30 ug of whole cell lysate) A:  
Molt-4 , 10% SDS PAGE antibody diluted at 1:500