

Datasheet for ABIN2854955
anti-NARS antibody



[Go to Product page](#)

3 Images

Overview

Quantity:	100 µL
Target:	NARS
Reactivity:	Human
Host:	Rabbit
Clonality:	Polyclonal
Conjugate:	This NARS antibody is un-conjugated
Application:	Western Blotting (WB), Immunohistochemistry (Paraffin-embedded Sections) (IHC (p))

Product Details

Immunogen:	Recombinant protein encompassing a sequence within the center region of human NARS. The exact sequence is proprietary.
Isotype:	IgG
Cross-Reactivity:	Human, Mouse
Characteristics:	Rabbit Polyclonal antibody to NARS (asparaginyl-tRNA synthetase) NARS antibody
Purification:	Purified by antigen-affinity chromatography.

Target Details

Target:	NARS
Alternative Name:	asparaginyl-tRNA synthetase (NARS Products)

Target Details

Background: Aminoacyl-tRNA synthetases are a class of enzymes that charge tRNAs with their cognate amino acids. Asparaginyl-tRNA synthetase is localized to the cytoplasm and belongs to the class II family of tRNA synthetases. The N-terminal domain represents the signature sequence for the eukaryotic asparaginyl-tRNA synthetases.

Cellular Localization: Cytoplasm

Molecular Weight: 63 kDa

Gene ID: 4677

UniProt: [O43776](#)

Application Details

Application Notes: WB: 1:500-1:3000. IHC-P: 1:100-1:1000. Optimal dilutions/concentrations should be determined by the researcher. Not tested in other applications.

Comment: Positive Control: U87-MG , Mouse liver

Restrictions: For Research Use only

Handling

Format: Liquid

Concentration: 0.51 mg/mL

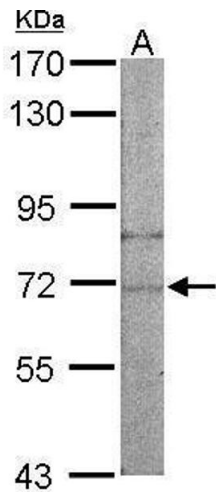
Buffer: 0.1M Tris-Glycine (pH 7), 10 % Glycerol, 0.01 % Thimerosal

Preservative: Thimerosal (Merthiolate)

Precaution of Use: This product contains Thimerosal (Merthiolate): a POISONOUS AND HAZARDOUS SUBSTANCE which should be handled by trained staff only.

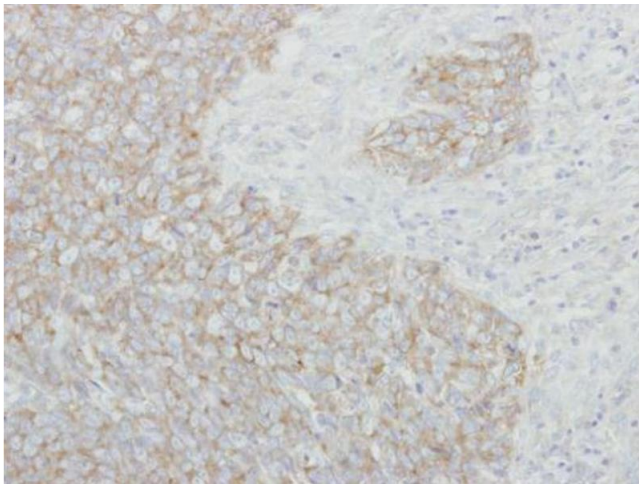
Storage: 4 °C,-20 °C

Storage Comment: Store as concentrated solution. Centrifuge briefly prior to opening vial. For short-term storage (1-2 weeks), store at 4°C. For long-term storage, aliquot and store at -20°C or below. Avoid multiple freeze-thaw cycles.



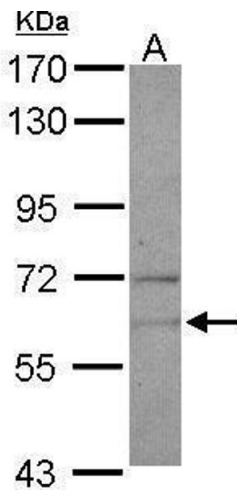
Western Blotting

Image 1. WB Image Sample (50 ug of whole cell lysate) A: mouse liver 7.5% SDS PAGE antibody diluted at 1:500



Immunohistochemistry

Image 2. IHC-P Image Immunohistochemical analysis of paraffin-embedded human breast cancer, using NARS, antibody at 1:250 dilution.



Western Blotting

Image 3. WB Image Sample (30 ug of whole cell lysate) A: U87-MG 7.5% SDS PAGE antibody diluted at 1:500