



[Go to Product page](#)

Datasheet for ABIN2854956

## anti-MLH1 antibody

### 3 Images

#### Overview

|              |   |
|--------------|---|
| Quantity:    | 100 µL  |
| Target:      | MLH1  |
| Reactivity:  | Human   |
| Host:        | Rabbit  |
| Clonality:   | Polyclonal  |
| Conjugate:   | This MLH1 antibody is un-conjugated                                       |
| Application: | Western Blotting (WB), Immunofluorescence (IF), Immunocytochemistry (ICC) |

#### Product Details

|                   |  |
|-------------------|--|
| Immunogen:        | Recombinant protein encompassing a sequence within the center region of human MLH1. The exact sequence is proprietary. |
| Isotype:          | IgG  |
| Cross-Reactivity: | Human  |
| Characteristics:  | Rabbit Polyclonal antibody to MLH1 (mutL homolog 1, colon cancer, nonpolyposis type 2 (E. coli))<br>MLH1 antibody      |
| Purification:     | Purified by antigen-affinity chromatography.   |

#### Target Details

|                   |  |
|-------------------|--|
| Target:           | MLH1   |
| Alternative Name: | mutL homolog 1 ( <a href="#">MLH1 Products</a> ) |

## Target Details

---

**Background:** This gene was identified as a locus frequently mutated in hereditary nonpolyposis colon cancer (HNPCC). It is a human homolog of the E. coli DNA mismatch repair gene mutL, consistent with the characteristic alterations in microsatellite sequences (RER+ phenotype) found in HNPCC. Alternatively spliced transcript variants encoding different isoforms have been described, but their full-length natures have not been determined.

Cellular Localization: Nucleus

---

**Molecular Weight:** 85 kDa

---

**Gene ID:** 4292

---

**UniProt:** [P40692](#)

---

**Pathways:** [DNA Damage Repair](#), [Production of Molecular Mediator of Immune Response](#)

## Application Details

---

**Application Notes:** WB: 1:500-1:20000. ICC/IF: 1:100-1:1000. Optimal dilutions/concentrations should be determined by the researcher. Not tested in other applications.

---

**Comment:** Positive Control: A549 , H1299 , human MLH1-transfected 293T  
Validation: Overexpression

---

**Restrictions:** For Research Use only

## Handling

---

**Format:** Liquid

---

**Concentration:** 0.94 mg/mL

---

**Buffer:** 1XPBS ( pH 7), 1 % BSA, 20 % Glycerol, 0.01 % Thimerosal

---

**Preservative:** Thimerosal (Merthiolate)

---

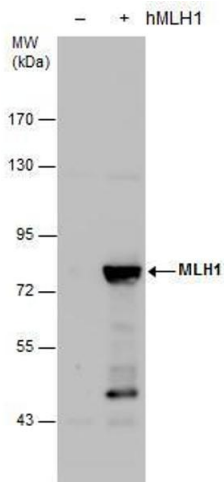
**Precaution of Use:** This product contains Thimerosal (Merthiolate): a POISONOUS AND HAZARDOUS SUBSTANCE which should be handled by trained staff only.

---

**Storage:** 4 °C,-20 °C

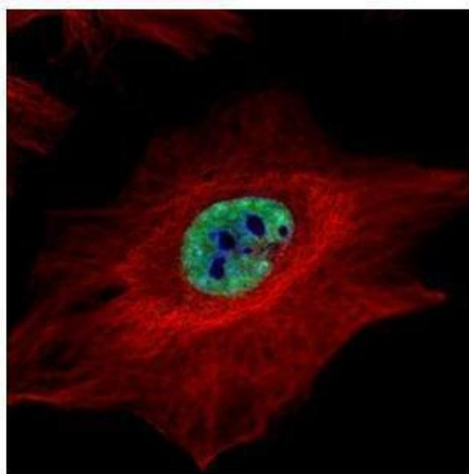
---

**Storage Comment:** Store as concentrated solution. Centrifuge briefly prior to opening vial. For short-term storage (1-2 weeks), store at 4°C. For long-term storage, aliquot and store at -20°C or below. Avoid multiple freeze-thaw cycles.



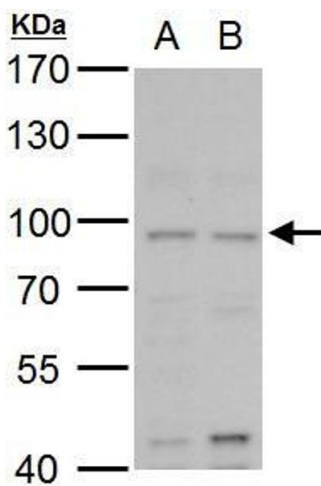
### Western Blotting

**Image 1.** WB Image MLH1 antibody detects MLH1 protein by western blot analysis. Non-transfected (-) and MLH1-transfected (+) 293T whole cell extracts (30 µg) were separated by 7.5% SDS-PAGE, and the membrane was blotted with MLH1 antibody, at a dilution of 1:20000.



### Immunofluorescence

**Image 2.** ICC/IF Image Confocal immunofluorescence analysis (Olympus FV10i) of paraformaldehyde-fixed HeLa, using MLH1, antibody (Green) at 1:500 dilution. Alpha-tubulin filaments were labeled with (Red) at 1:2000.



### Western Blotting

**Image 3.** WB Image MLH1 antibody detects MLH1 protein by western blot analysis. A. 30 µg A549 whole cell lysate/extract B. 30 µg H1299 whole cell lysate/extract 7.5 % SDS-PAGE MLH1 antibody, dilution: 1:500