

Datasheet for ABIN2854961
anti-HADHA antibody (C-Term)

5 Images

[Go to Product page](#)

Overview

Quantity:	100 µL
Target:	HADHA
Binding Specificity:	C-Term
Reactivity:	Human, Mouse, Rat
Host:	Rabbit
Clonality:	Polyclonal
Conjugate:	This HADHA antibody is un-conjugated
Application:	Western Blotting (WB), Immunofluorescence (IF), Immunohistochemistry (Paraffin-embedded Sections) (IHC (p)), Immunocytochemistry (ICC)

Product Details

Immunogen:	Recombinant protein encompassing a sequence within the C-terminus region of human HADHA. The exact sequence is proprietary.
Isotype:	IgG
Characteristics:	Rabbit Polyclonal antibody to HADHA (hydroxyacyl-CoA dehydrogenase/3-ketoacyl-CoA thiolase/enoyl-CoA hydratase (trifunctional protein), alpha subunit) HADHA antibody
Purification:	Purified by antigen-affinity chromatography.

Target Details

Target:	HADHA
---------	-------

Target Details

Alternative Name:	HADHA (HADHA Products)
Background:	<p>This gene encodes the alpha subunit of the mitochondrial trifunctional protein, which catalyzes the last three steps of mitochondrial beta-oxidation of long chain fatty acids. The mitochondrial membrane-bound heterocomplex is composed of four alpha and four beta subunits, with the alpha subunit catalyzing the 3-hydroxyacyl-CoA dehydrogenase and enoyl-CoA hydratase activities. Mutations in this gene result in trifunctional protein deficiency or LCHAD deficiency. The genes of the alpha and beta subunits of the mitochondrial trifunctional protein are located adjacent to each other in the human genome in a head-to-head orientation.</p> <p>Cellular Localization: Mitochondrion</p>
Molecular Weight:	83 kDa
Gene ID:	3030
Pathways:	Monocarboxylic Acid Catabolic Process

Application Details

Application Notes:	<p>Suggested dilution Reference ICC/IF 1:100-1:1000* IHC (Formalin-fixed paraffin-embedded sections) 1:100-1:1000* Western blot 1:500-1:3000* Not tested in other applications. *Optimal dilutions/concentrations should be determined by the researcher.Suggested dilutionReferenceICC/IF1:100-1:1000* IHC (Formalin-fixed paraffin-embedded sections)1:100-1:1000* Western blot1:500-1:3000*</p>
Comment:	Positive Control: Molt-4 , Raji , mouse kidney , rat liver
Restrictions:	For Research Use only

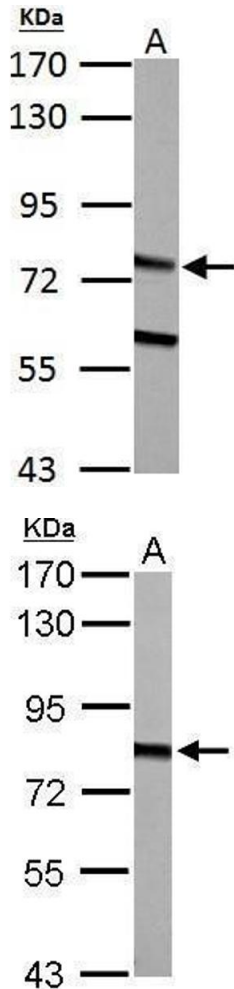
Handling

Format:	Liquid
Concentration:	1 mg/mL
Buffer:	0.1M Tris, 0.1M Glycine, 10 % Glycerol (pH 7). 0.01 % Thimerosal was added as a preservative.
Preservative:	Thimerosal (Merthiolate)
Precaution of Use:	This product contains Thimerosal (Merthiolate): a POISONOUS AND HAZARDOUS SUBSTANCE which should be handled by trained staff only.
Storage:	-20 °C

Handling

Storage Comment: Keep as concentrated solution. Aliquot and store at -20°C or below. Avoid multiple freeze-thaw cycles.

Images

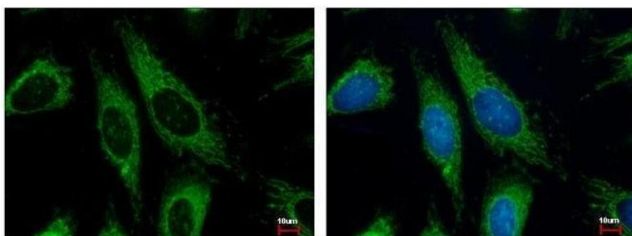


Western Blotting

Image 1. WB Image HADHA antibody detects HADHA protein by Western blot analysis. A. 50 µg rat liver lysate/extract 7.5 % SDS-PAGE HADHA antibody , dilution: 1:500

Western Blotting

Image 2. WB Image HADHA antibody detects HADHA protein by Western blot analysis. A. 50 µg mouse kidney lysate/extract 7.5 % SDS-PAGE HADHA antibody , dilution: 1:500



Immunofluorescence

Image 3. ICC/IF Image HADHA antibody detects HADHA protein at Mitochondria by immunofluorescent analysis. Sample: HeLa cells were fixed in 2% paraformaldehyde/culture medium at 37°C for 30 min. *Green: HADHA protein stained by HADHA antibody , diluted at 1:500. Blue: Hoechst 33343 staining.*

Please check the [product details page](#) for more images. Overall 5 images are available for ABIN2854961.