

Datasheet for ABIN2854962

## anti-GLA antibody



[Go to Product page](#)

5 Images

2 Publications

### Overview

Quantity:	100 µL
Target:	GLA
Reactivity:	Human
Host:	Rabbit
Clonality:	Polyclonal
Conjugate:	This GLA antibody is un-conjugated
Application:	Western Blotting (WB), Immunoprecipitation (IP), Immunohistochemistry (Paraffin-embedded Sections) (IHC (p))

### Product Details

Immunogen:	Recombinant protein encompassing a sequence within the center region of human Galactosidase alpha. The exact sequence is proprietary.
Isotype:	IgG
Specificity:	Knockdown/Knockout validation was supported by customer review data.
Cross-Reactivity:	Human, Rat
Characteristics:	Rabbit Polyclonal antibody to Galactosidase alpha (galactosidase, alpha) Galactosidase alpha antibody [N1C2]
Purification:	Purified by antigen-affinity chromatography.
Grade:	KO Validated

## Target Details

Target:	GLA
Alternative Name:	galactosidase alpha ( <a href="#">GLA Products</a> )
Background:	<p>This gene encodes a homodimeric glycoprotein that hydrolyses the terminal alpha-galactosyl moieties from glycolipids and glycoproteins. This enzyme predominantly hydrolyzes ceramide trihexoside, and it can catalyze the hydrolysis of melibiose into galactose and glucose. A variety of mutations in this gene affect the synthesis, processing, and stability of this enzyme, which causes Fabry disease, a rare lysosomal storage disorder that results from a failure to catabolize alpha-D-galactosyl glycolipid moieties.</p> <p>Cellular Localization: Lysosome</p>
Molecular Weight:	49 kDa
Gene ID:	2717
UniProt:	<a href="#">P06280</a>
Pathways:	<a href="#">SARS-CoV-2 Protein Interactome</a>

## Application Details

Application Notes:	WB: 1:500-1:3000. IHC-P: 1:100-1:1000. IP: 1:100-1:500. Optimal dilutions/concentrations should be determined by the researcher. Not tested in other applications.
Comment:	Positive Control: HeLa , 293T , Rat lung Validation: KO/KD
Restrictions:	For Research Use only

## Handling

Format:	Liquid
Concentration:	0.157 mg/mL
Buffer:	1XPBS ( pH 7), 20 % Glycerol, 0.025 % ProClin 300
Preservative:	ProClin
Precaution of Use:	This product contains ProClin: a POISONOUS AND HAZARDOUS SUBSTANCE which should be handled by trained staff only.
Storage:	4 °C,-20 °C

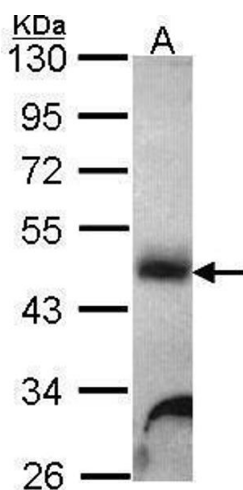
## Handling

**Storage Comment:** Store as concentrated solution. Centrifuge briefly prior to opening vial. For short-term storage (1-2 weeks), store at 4°C. For long-term storage, aliquot and store at -20°C or below. Avoid multiple freeze-thaw cycles.

## Publications

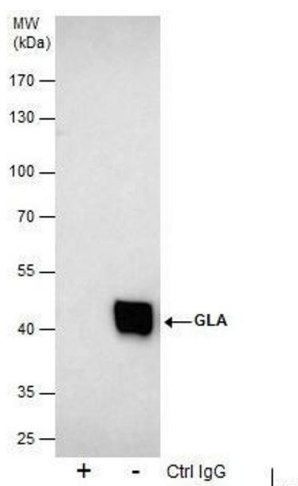
**Product cited in:** Chao, Wroblewski, Ilkayeva, Stevens, Bain, Meyer, Schenk, Martinez, Vergnes, Narkar, Drew, Hong, Boyadjian, Hevener, Evans, Reue, Spencer, Newgard, Tontonoz: "Skeletal muscle Nur77 expression enhances oxidative metabolism and substrate utilization." in: **Journal of lipid research**, Vol. 53, Issue 12, pp. 2610-9, (2012) ([PubMed](#)).

## Validation report #104252 for Cleavage Under Targets and Release Using Nuclease (CUT&RUN)



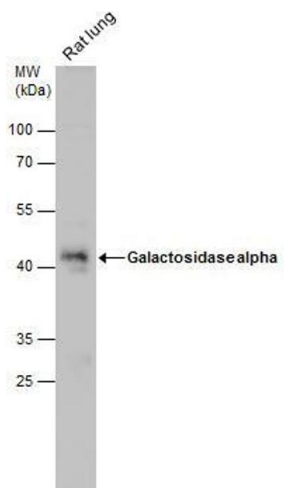
### Western Blotting

**Image 1.** WB Image Sample (30 ug of whole cell lysate) A: Hela 10% SDS PAGE Galactosidase alpha antibody antibody diluted at 1:1000



### Immunoprecipitation

**Image 2.** IP Image Immunoprecipitation of GLA protein from 293T whole cell extracts using 5 µg of Galactosidase alpha antibody [N1C2], Western blot analysis was performed using Galactosidase alpha antibody [N1C2], EasyBlot anti-Rabbit IgG was used as a secondary reagent.



Western Blotting

**Image 3.** WB Image Galactosidase alpha antibody [N1C2] detects Galactosidase alpha protein by western blot analysis. Rat tissue extracts (50 µg) was separated by 10% SDS-PAGE, and the membrane was blotted with Galactosidase alpha antibody [N1C2] , diluted at 1:1000.

Please check the [product details page](#) for more images. Overall 5 images are available for ABIN2854962.