



[Go to Product page](#)

Datasheet for ABIN2854963
anti-Gelsolin antibody (C-Term)

5 Images

Overview

Quantity:	100 µL
Target:	Gelsolin (GSN)
Binding Specificity:	C-Term
Reactivity:	Human
Host:	Rabbit
Clonality:	Polyclonal
Conjugate:	This Gelsolin antibody is un-conjugated
Application:	Western Blotting (WB), Immunocytochemistry (ICC), Immunohistochemistry (Paraffin-embedded Sections) (IHC (p)), Immunofluorescence (IF)

Product Details

Immunogen:	Recombinant protein encompassing a sequence within the C-terminus region of human Gelsolin. The exact sequence is proprietary.
Isotype:	IgG
Cross-Reactivity:	Human, Mouse, Rat
Characteristics:	Rabbit Polyclonal antibody to Gelsolin (gelsolin) Gelsolin antibody [C2C3], C-term
Purification:	Purified by antigen-affinity chromatography.
Grade:	KO Validated

Target Details

Target:	Gelsolin (GSN)
Alternative Name:	gelsolin (GSN Products)
Background:	<p>The protein encoded by this gene binds to the "plus" ends of actin monomers and filaments to prevent monomer exchange. The encoded calcium-regulated protein functions in both assembly and disassembly of actin filaments. Defects in this gene are a cause of familial amyloidosis Finnish type (FAF). Multiple transcript variants encoding several different isoforms have been found for this gene.</p> <p>Cellular Localization: Isoform 2: Cytoplasm , cytoskeleton , Isoform 1: Secreted</p>
Molecular Weight:	86 kDa
Gene ID:	2934
UniProt:	P06396
Pathways:	Caspase Cascade in Apoptosis , Regulation of Actin Filament Polymerization , Autophagy

Application Details

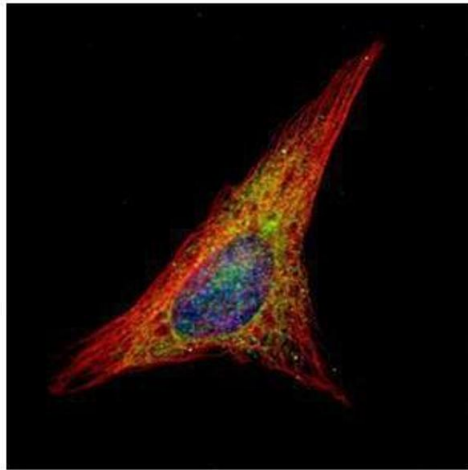
Application Notes:	WB: 1:500-1:3000. ICC/IF: 1:100-1:1000. IHC-P: 1:100-1:1000. Optimal dilutions/concentrations should be determined by the researcher. Not tested in other applications.
Comment:	Positive Control: H1299 , HeLa , human plasma , rat plasma , mouse plasma Validation: KO/KD
Restrictions:	For Research Use only

Handling

Format:	Liquid
Concentration:	0.27 mg/mL
Buffer:	0.1M Tris-Glycine (pH 7), 10 % Glycerol, 0.01 % Thimerosal
Preservative:	Thimerosal (Merthiolate)
Precaution of Use:	This product contains Thimerosal (Merthiolate): a POISONOUS AND HAZARDOUS SUBSTANCE which should be handled by trained staff only.
Storage:	4 °C,-20 °C
Storage Comment:	Store as concentrated solution. Centrifuge briefly prior to opening vial. For short-term storage

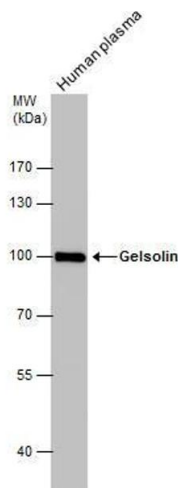
(1-2 weeks), store at 4°C. For long-term storage, aliquot and store at -20°C or below. Avoid multiple freeze-thaw cycles.

Validation report #104437 for Cleavage Under Targets and Release Using Nuclease (CUT&RUN)



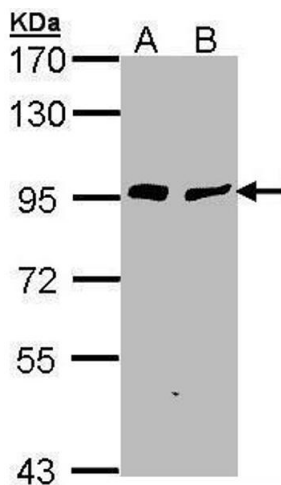
Immunofluorescence

Image 1. ICC/IF Image Confocal immunofluorescence analysis (Olympus FV10i) of methanol-fixed HeLa, using Gelsolin, antibody (Green) at 1:500 dilution. Alpha-tubulin filaments were labeled with (Red) at 1:2000.



Western Blotting

Image 2. WB Image Gelsolin antibody detects Gelsolin protein by western blot analysis. Human tissue extract (30 µg) was separated by 7.5% SDS-PAGE, and the membrane was blotted with Gelsolin antibody, diluted at 1:1000.



Western Blotting

Image 3. WB Image Sample (30 ug of whole cell lysate) A: H1299 B: HeLa 7.5% SDS PAGE antibody diluted at 1:1000

Please check the [product details page](#) for more images. Overall 5 images are available for ABIN2854963.