

Datasheet for ABIN2854965

anti-GALC antibody[Go to Product page](#)**1** Image

Overview

Quantity:	100 µL
Target:	GALC
Reactivity:	Human
Host:	Rabbit
Clonality:	Polyclonal
Conjugate:	This GALC antibody is un-conjugated
Application:	Western Blotting (WB), Immunohistochemistry (Paraffin-embedded Sections) (IHC (p))

Product Details

Immunogen:	Recombinant protein encompassing a sequence within the center region of human Galactosylceramidase. The exact sequence is proprietary.
Isotype:	IgG
Cross-Reactivity:	Human, Mouse
Characteristics:	Rabbit polyclonal antibody to Galactosylceramidase (galactosylceramidase) Galactosylceramidase antibody [N3C3]
Purification:	Purified by antigen-affinity chromatography.

Target Details

Target:	GALC
Alternative Name:	galactosylceramidase (GALC Products)

Target Details

Background: This gene encodes a lysosomal protein which hydrolyzes the galactose ester bonds of galactosylceramide, galactosylsphingosine, lactosylceramide, and monogalactosyldiglyceride. Mutations in this gene have been associated with Krabbe disease, also known as globoid cell leukodystrophy. Alternate transcriptional splice variants, encoding different isoforms, have been characterized.

Cellular Localization: Lysosome

Molecular Weight: 77 kDa

Gene ID: 2581

UniProt: [P54803](#)

Application Details

Application Notes: WB: 1:500-1:3000. IHC-P: 1:100-1:1000. Optimal dilutions/concentrations should be determined by the researcher. Not tested in other applications.

Comment: Validation:Orthogonal, Overexpression

Restrictions: For Research Use only

Handling

Format: Liquid

Concentration: 0.46 mg/mL

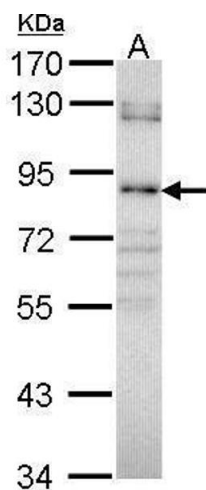
Buffer: 1XPBS pH 7, 20 % Glycerol, 0.025 % ProClin 300

Preservative: ProClin

Precaution of Use: This product contains ProClin: a POISONOUS AND HAZARDOUS SUBSTANCE which should be handled by trained staff only.

Storage: 4 °C,-20 °C

Storage Comment: Store as concentrated solution. Centrifuge briefly prior to opening vial. For short-term storage (1-2 weeks), store at 4°C. For long-term storage, aliquot and store at -20°C or below. Avoid multiple freeze-thaw cycles.



Western Blotting

Image 1. WB Image Sample (30 ug of whole cell lysate) A:
H1299 7.5% SDS PAGE Galactosylceramidase antibody
antibody diluted at 1:1000