

Datasheet for ABIN2854966

**anti-GGT1 antibody**

3 Images

[Go to Product page](#)

## Overview

Quantity:	100 µL
Target:	GGT1
Reactivity:	Human
Host:	Rabbit
Clonality:	Polyclonal
Conjugate:	This GGT1 antibody is un-conjugated
Application:	Western Blotting (WB), Immunohistochemistry (Paraffin-embedded Sections) (IHC (p))

## Product Details

Immunogen:	Recombinant protein encompassing a sequence within the center region of human GGT1. The exact sequence is proprietary.
Isotype:	IgG
Specificity:	Based on sequence homology, this antibody may cross react with GGT2 protein.
Cross-Reactivity:	Human, Mouse
Characteristics:	Rabbit Polyclonal antibody to GGT1 (gamma-glutamyltransferase 1) GGT1 antibody
Purification:	Purified by antigen-affinity chromatography.

## Target Details

Target:	GGT1
---------	------

## Target Details

Alternative Name:	gamma-glutamyltransferase 1 ( <a href="#">GGT1 Products</a> )
Background:	<p>The enzyme encoded by this gene catalyzes the transfer of the glutamyl moiety of glutathione to a variety of amino acids and dipeptide acceptors. The enzyme is composed of a heavy chain and a light chain, which are derived from a single precursor protein, and is present in tissues involved in absorption and secretion. This enzyme is a member of the gamma-glutamyltransferase protein family, of which many members have not yet been fully characterized and some of which may represent pseudogenes. This gene is classified as type I gamma-glutamyltransferase. Multiple alternatively spliced variants, encoding the same protein, have been identified.</p> <p>Cellular Localization: Membrane, Single-pass type II membrane protein</p>
Molecular Weight:	61 kDa
Gene ID:	2678
UniProt:	<a href="#">P19440</a>

## Application Details

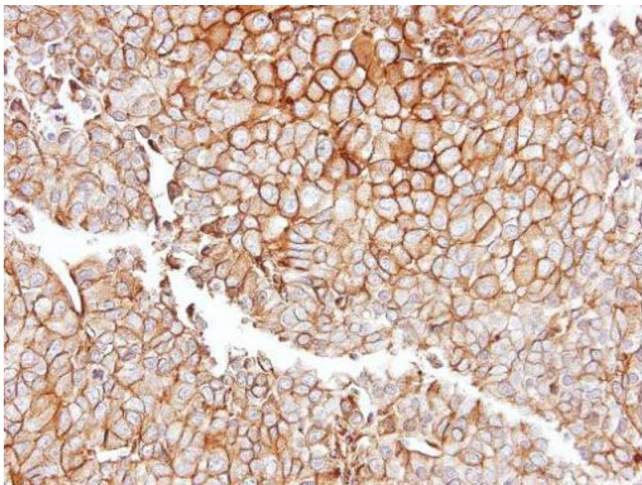
Application Notes:	WB: 1:500-1:3000. IHC-P: 1:100-1:1000. Optimal dilutions/concentrations should be determined by the researcher. Not tested in other applications.
Comment:	Positive Control: Neuro2A , GL261 , C8D30 , NIH-3T3 , Raw264.7 , C2C12
Restrictions:	For Research Use only

## Handling

Format:	Liquid
Concentration:	0.71 mg/mL
Buffer:	1XPBS ( pH 7), 20 % Glycerol, 0.025 % ProClin 300
Preservative:	ProClin
Precaution of Use:	This product contains ProClin: a POISONOUS AND HAZARDOUS SUBSTANCE which should be handled by trained staff only.
Storage:	4 °C,-20 °C
Storage Comment:	Store as concentrated solution. Centrifuge briefly prior to opening vial. For short-term storage (1-2 weeks), store at 4°C. For long-term storage, aliquot and store at -20°C or below. Avoid

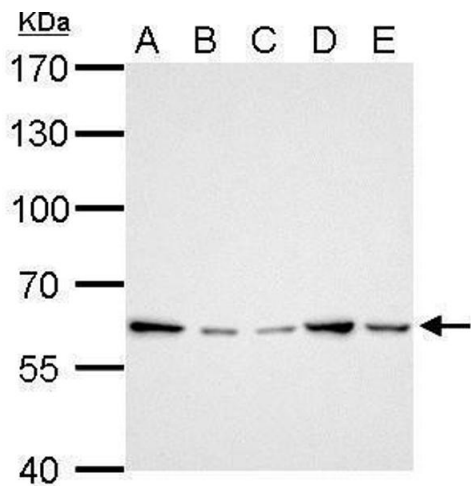
multiple freeze-thaw cycles.

Validation report #104426 for Immunohistochemistry (IHC)



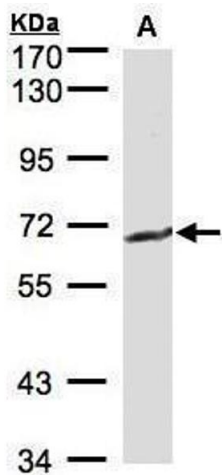
Immunohistochemistry

**Image 1.** IHC-P Image Immunohistochemical analysis of paraffin-embedded PC13 xenograft, using GGT1, antibody at 1:100 dilution.



Western Blotting

**Image 2.** WB Image GGT1 antibody detects GGT1 protein by Western blot analysis. A. 30 µg Neuro2A whole cell lysate/extract B. 30 µg GL261 whole cell lysate/extract C. 30 µg C8D30 whole cell lysate/extract D. 30 µg NIH-3T3 whole cell lysate/extract E. 30 µg Raw264.7 whole cell lysate/extract F. 30 µg C2C12 whole cell lysate/extract 7.5 % SDS-PAGE GGT1 antibody , dilution: 1:1000



Western Blotting

**Image 3.** WB Image Sample(30 µg of whole cell lysate) A:MOLT4, 7.5% SDS PAGE antibody diluted at 1:500