

Datasheet for ABIN2854972

anti-SYCP3 antibody[Go to Product page](#)**1** Image

Overview

Quantity:	100 µL
Target:	SYCP3
Reactivity:	Human
Host:	Rabbit
Clonality:	Polyclonal
Conjugate:	This SYCP3 antibody is un-conjugated
Application:	Western Blotting (WB)

Product Details

Immunogen:	Recombinant protein encompassing a sequence within the center region of human SCP3. The exact sequence is proprietary.
Isotype:	IgG
Cross-Reactivity:	Mouse
Characteristics:	Rabbit Polyclonal antibody to SCP3 (synaptonemal complex protein 3) SYCP3 antibody
Purification:	Purified by antigen-affinity chromatography.

Target Details

Target:	SYCP3
Alternative Name:	synaptonemal complex protein 3 (SYCP3 Products)

Target Details

Background: This gene encodes an essential structural component of the synaptonemal complex. This complex is involved in synapsis, recombination and segregation of meiotic chromosomes. Mutations in this gene are associated with azoospermia in males and susceptibility to pregnancy loss in females. Alternate splicing results in multiple transcript variants that encode the same protein.

Cellular Localization: Nucleus (By similarity)

Molecular Weight: 28 kDa

Gene ID: 50511

UniProt: [Q8IZU3](#)

Application Details

Application Notes: WB: 1:500-1:3000. Optimal dilutions/concentrations should be determined by the researcher. Not tested in other applications.

Comment: Positive Control: mouse testis

Restrictions: For Research Use only

Handling

Format: Liquid

Concentration: 1.01 mg/mL

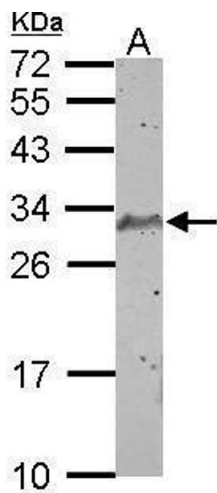
Buffer: 1XPBS (pH 7), 1 % BSA, 20 % Glycerol, 0.01 % Thimerosal

Preservative: Thimerosal (Merthiolate)

Precaution of Use: This product contains Thimerosal (Merthiolate): a POISONOUS AND HAZARDOUS SUBSTANCE which should be handled by trained staff only.

Storage: 4 °C, -20 °C

Storage Comment: Store as concentrated solution. Centrifuge briefly prior to opening vial. For short-term storage (1-2 weeks), store at 4°C. For long-term storage, aliquot and store at -20°C or below. Avoid multiple freeze-thaw cycles.



Western Blotting

Image 1. WB Image Sample (50 ug of whole cell lysate) A:
mouse testis 12% SDS PAGE antibody diluted at 1:1000