

Datasheet for ABIN2854976

anti-Growth Hormone 1 antibody**3** Images[Go to Product page](#)

Overview

| | |
|--------------|--|
| Quantity: | 100 µL |
| Target: | Growth Hormone 1 (GH1) |
| Reactivity: | Human |
| Host: | Rabbit |
| Clonality: | Polyclonal |
| Conjugate: | This Growth Hormone 1 antibody is un-conjugated |
| Application: | Western Blotting (WB), Immunohistochemistry (Paraffin-embedded Sections) (IHC (p)) |

Product Details

| | |
|-------------------|--|
| Immunogen: | Recombinant protein encompassing a sequence within the center region of human Growth Hormone. The exact sequence is proprietary. |
| Isotype: | IgG |
| Cross-Reactivity: | Human |
| Characteristics: | Rabbit Polyclonal antibody to Growth Hormone (growth hormone 1) Growth Hormone antibody [N1C3] |
| Purification: | Purified by antigen-affinity chromatography. |

Target Details

| | |
|-------------------|---|
| Target: | Growth Hormone 1 (GH1) |
| Alternative Name: | growth hormone 1 (GH1 Products) |

Target Details

| | |
|-------------------|--|
| Background: | <p>The protein encoded by this gene is a member of the somatotropin/prolactin family of hormones which play an important role in growth control. The gene, along with four other related genes, is located at the growth hormone locus on chromosome 17 where they are interspersed in the same transcriptional orientation, an arrangement which is thought to have evolved by a series of gene duplications. The five genes share a remarkably high degree of sequence identity. Alternative splicing generates additional isoforms of each of the five growth hormones, leading to further diversity and potential for specialization. This particular family member is expressed in the pituitary but not in placental tissue as is the case for the other four genes in the growth hormone locus. Mutations in or deletions of the gene lead to growth hormone deficiency and short stature.</p> <p>Cellular Localization: Secreted</p> |
| Molecular Weight: | 25 kDa |
| Gene ID: | 2688 |
| UniProt: | P01241 |
| Pathways: | NF-kappaB Signaling , JAK-STAT Signaling , Intracellular Steroid Hormone Receptor Signaling Pathway , Peptide Hormone Metabolism , Regulation of Intracellular Steroid Hormone Receptor Signaling , Regulation of Hormone Metabolic Process , Response to Growth Hormone Stimulus , Regulation of Hormone Biosynthetic Process |

Application Details

| | |
|--------------------|---|
| Application Notes: | WB: 1:500-1:3000. IHC-P: 1:100-1:1000. Optimal dilutions/concentrations should be determined by the researcher. Not tested in other applications. |
| Comment: | Positive Control: 293T |
| Restrictions: | For Research Use only |

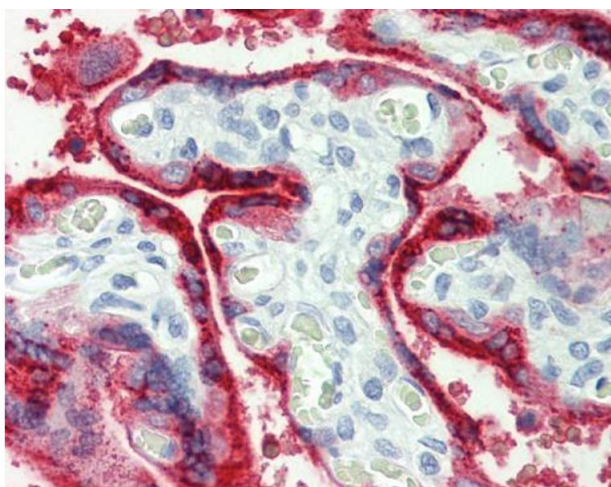
Handling

| | |
|----------------|---|
| Format: | Liquid |
| Concentration: | 1 mg/mL |
| Buffer: | 0.1M Tris-Glycine (pH 7), 10 % Glycerol, 0.01 % Thimerosal |
| Preservative: | Thimerosal (Merthiolate) |

Handling

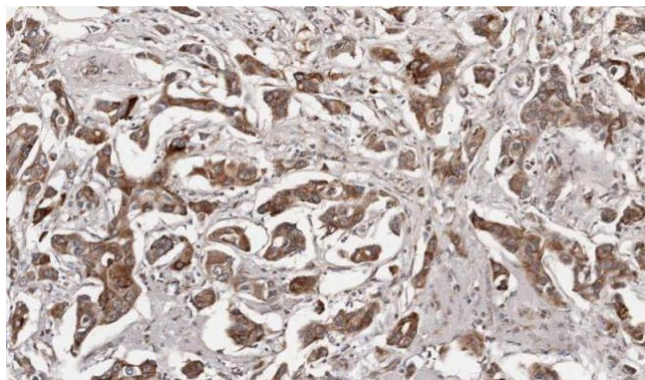
| | |
|--------------------|--|
| Precaution of Use: | This product contains Thimerosal (Merthiolate): a POISONOUS AND HAZARDOUS SUBSTANCE which should be handled by trained staff only. |
| Storage: | 4 °C, -20 °C |
| Storage Comment: | Store as concentrated solution. Centrifuge briefly prior to opening vial. For short-term storage (1-2 weeks), store at 4°C. For long-term storage, aliquot and store at -20°C or below. Avoid multiple freeze-thaw cycles. |

Validation report #104437 for Cleavage Under Targets and Release Using Nuclease (CUT&RUN)



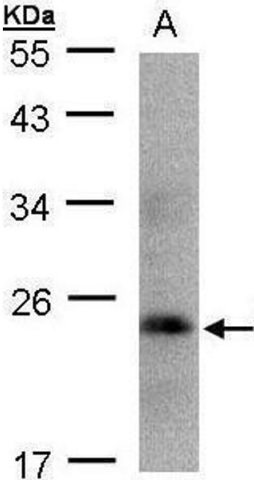
Immunohistochemistry

Image 1. IHC-P Image Immunohistochemical analysis of paraffin-embedded human placenta, using Growth Hormone, antibody(10 µg/ml).



Immunohistochemistry

Image 2. IHC-P Image Immunohistochemical analysis of paraffin-embedded human breast cancer, using Growth Hormone, antibody at 1:100 dilution.



Western Blotting

Image 3. WB Image Sample(30 ug whole cell lysate) A:293T
12% SDS PAGE antibody diluted at 1:1000