

Datasheet for ABIN2854977
anti-LYN antibody (Center)



[Go to Product page](#)

4 Images

Overview

| | |
|----------------------|------------------------------------------------------------------------------------------------------------------------------------------------------------------|
| Quantity: | 100 µL |
| Target: | LYN |
| Binding Specificity: | Center |
| Reactivity: | Human |
| Host: | Rabbit |
| Clonality: | Polyclonal |
| Conjugate: | This LYN antibody is un-conjugated |
| Application: | Western Blotting (WB), Immunoprecipitation (IP), Immunohistochemistry (Paraffin-embedded Sections) (IHC (p)), Immunofluorescence (IF), Immunocytochemistry (ICC) |

Product Details

| | |
|------------------|-----------------------------------------------------------------------------------------------------------------------|
| Immunogen: | Recombinant protein encompassing a sequence within the center region of human LYN. The exact sequence is proprietary. |
| Isotype: | IgG |
| Characteristics: | Rabbit Polyclonal antibody to LYN (v-yes-1 Yamaguchi sarcoma viral related oncogene homolog) LYN antibody |
| Purification: | Purified by antigen-affinity chromatography. |

Target Details

| | |
|---------|-----|
| Target: | LYN |
|---------|-----|

Target Details

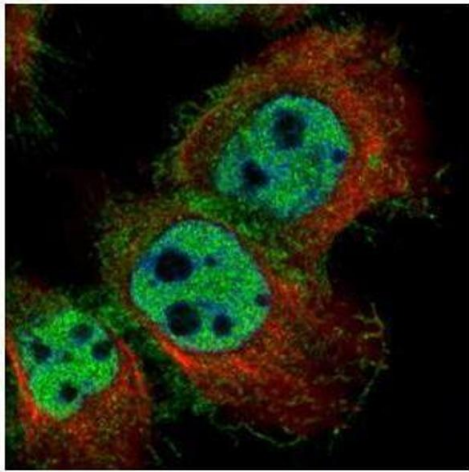
| | |
|-------------------|---------------------------------------------------------------------------------------------------------------------------------------------------------------------------------------------------------------------------------------------------------------------------------------------------------------------------------------------------------------------------------------------------------------------------------------------------------------------------------------------------------------------------|
| Alternative Name: | LYN (LYN Products) |
| Molecular Weight: | 59 kDa |
| Gene ID: | 4067 |
| Pathways: | Fc-epsilon Receptor Signaling Pathway , Hormone Transport , Response to Growth Hormone Stimulus , Cellular Response to Molecule of Bacterial Origin , Regulation of Leukocyte Mediated Immunity , Positive Regulation of Immune Effector Process , CXCR4-mediated Signaling Events , Thromboxane A2 Receptor Signaling , Integrin Complex , BCR Signaling |

Application Details

| | |
|--------------------|--------------------------------------------------------------------------------------------------------------------------------------------------------------------------------------------------------------------------------------------------------------------------------------------------------------------------------------------------------------------------------------------------------------------------------------------------------------|
| Application Notes: | Suggested dilution Reference ICC/IF 1:100-1:1000* IHC (Formalin-fixed paraffin-embedded sections) 1:100-1:1000* Immunoprecipitation 1:100-1:500* Western blot 1:500-1:3000* Not tested in other applications. *Optimal dilutions/concentrations should be determined by the researcher.Suggested dilutionReferenceICC/IF1:100-1:1000* IHC (Formalin-fixed paraffin-embedded sections)1:100-1:1000* Immunoprecipitation1:100-1:500* Western blot1:500-1:3000* |
| Comment: | Positive Control: Raji , K562 , THP-1 |
| Restrictions: | For Research Use only |

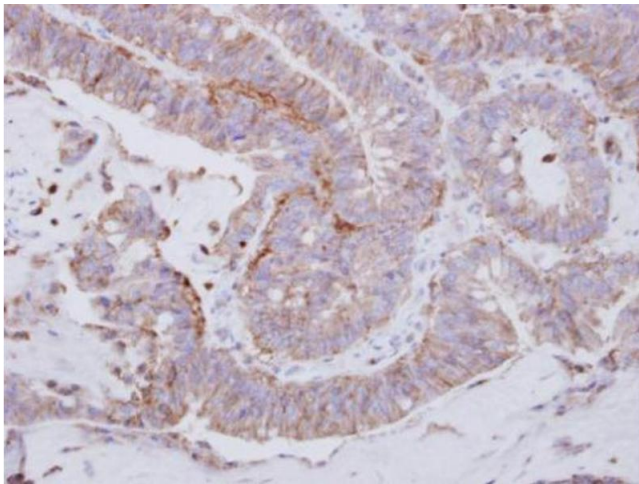
Handling

| | |
|--------------------|------------------------------------------------------------------------------------------------------------------------------------|
| Format: | Liquid |
| Concentration: | 1 mg/mL |
| Buffer: | 1XPBS, 1 % BSA, 20 % Glycerol (pH 7). 0.01 % Thimerosal was added as a preservative. |
| Preservative: | Thimerosal (Merthiolate) |
| Precaution of Use: | This product contains Thimerosal (Merthiolate): a POISONOUS AND HAZARDOUS SUBSTANCE which should be handled by trained staff only. |
| Storage: | -20 °C |
| Storage Comment: | Keep as concentrated solution. Aliquot and store at -20°C or below. Avoid multiple freeze-thaw cycles. |



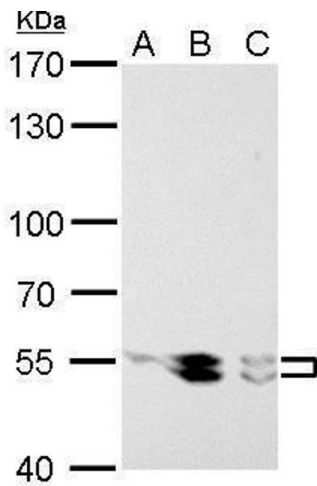
Immunofluorescence

Image 1. ICC/IF Image Confocal immunofluorescence analysis (Olympus FV10i) of paraformaldehyde-fixed A431, using LYN, antibody (Green) at 1:500 dilution. Alpha-tubulin filaments were labeled with (Red) at 1:2000.



Immunohistochemistry

Image 2. IHC-P Image Immunohistochemical analysis of paraffin-embedded human colon carcinoma, using LYN, antibody at 1:250 dilution.



Western Blotting

Image 3. WB Image LYN antibody detects LYN protein by Western blot analysis. A. 30 µg Raji whole cell lysate/extract B. 30 µg K562 whole cell lysate/extract C. 30 µg Raji whole cell lysate/extract 7.5 % SDS-PAGE LYN antibody , dilution: 1:1000

Please check the [product details page](#) for more images. Overall 4 images are available for ABIN2854977.