



[Go to Product page](#)

Datasheet for ABIN2854980

anti-COMT antibody

4 Images

1 Publication

Overview

| | |
|--------------|---|
| Quantity: | 100 µL |
| Target: | COMT |
| Reactivity: | Human |
| Host: | Rabbit |
| Clonality: | Polyclonal |
| Conjugate: | This COMT antibody is un-conjugated |
| Application: | Western Blotting (WB), ELISA, Immunohistochemistry (Paraffin-embedded Sections) (IHC (p)) |

Product Details

| | |
|-------------------|--|
| Immunogen: | Recombinant protein encompassing a sequence within the center region of human COMT. The exact sequence is proprietary. |
| Isotype: | IgG |
| Cross-Reactivity: | Human, Mouse |
| Characteristics: | Rabbit Polyclonal antibody to COMT (catechol-O-methyltransferase) COMT antibody |
| Purification: | Purified by antigen-affinity chromatography. |
| Grade: | KO Validated |

Target Details

| | |
|---------|------|
| Target: | COMT |
|---------|------|

Target Details

| | |
|-------------------|--|
| Alternative Name: | catechol-O-methyltransferase (COMT Products) |
| Background: | <p>Catechol-O-methyltransferase catalyzes the transfer of a methyl group from S-adenosylmethionine to catecholamines, including the neurotransmitters dopamine, epinephrine, and norepinephrine. This O-methylation results in one of the major degradative pathways of the catecholamine transmitters. In addition to its role in the metabolism of endogenous substances, COMT is important in the metabolism of catechol drugs used in the treatment of hypertension, asthma, and Parkinson disease. COMT is found in two forms in tissues, a soluble form (S-COMT) and a membrane-bound form (MB-COMT). The differences between S-COMT and MB-COMT reside within the N-termini. Several transcript variants are formed through the use of alternative translation initiation sites and promoters.</p> <p>Cellular Localization: Isoform Soluble: Cytoplasm , Isoform Membrane-bound: Cell membrane</p> |
| Molecular Weight: | 30 kDa |
| Gene ID: | 1312 |
| UniProt: | P21964 |
| Pathways: | Steroid Hormone Biosynthesis , SARS-CoV-2 Protein Interactome |

Application Details

| | |
|--------------------|--|
| Application Notes: | WB: 1:500-1:3000. IHC-P: 1:100-1:1000. ELISA: 1:1000-1:10000. Optimal dilutions/concentrations should be determined by the researcher. Not tested in other applications. |
| Comment: | Positive Control: mouse spleen , Molt-4 , 293T Validation: KO/KD |
| Restrictions: | For Research Use only |

Handling

| | |
|--------------------|---|
| Format: | Liquid |
| Concentration: | 0.32 mg/mL |
| Buffer: | 0.1M Tris-Glycine (pH 7), 10 % Glycerol, 0.01 % Thimerosal |
| Preservative: | Thimerosal (Merthiolate) |
| Precaution of Use: | This product contains Thimerosal (Merthiolate): a POISONOUS AND HAZARDOUS SUBSTANCE |

Handling

which should be handled by trained staff only.

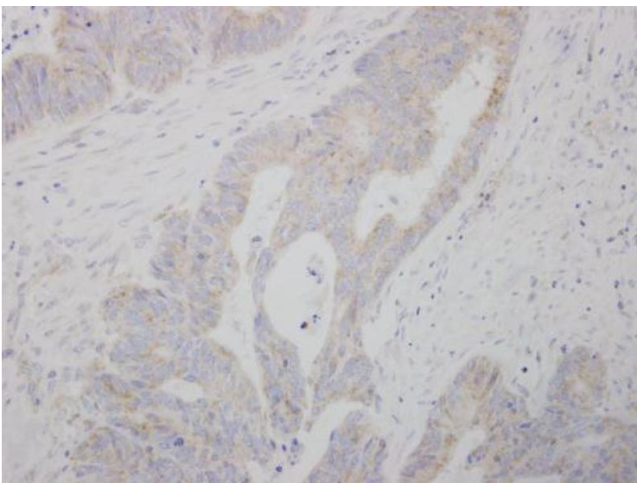
Storage: 4 °C,-20 °C

Storage Comment: Store as concentrated solution. Centrifuge briefly prior to opening vial. For short-term storage (1-2 weeks), store at 4°C. For long-term storage, aliquot and store at -20°C or below. Avoid multiple freeze-thaw cycles.

Publications

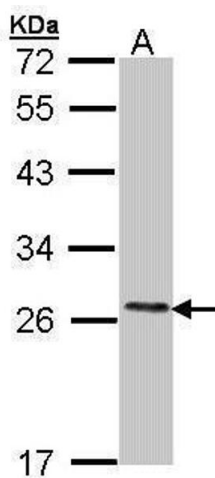
Product cited in: Ikeda, Iijima, Shinoda, Iwamoto, Takeda: "Inhibitory Effect of Bovine Lactoferrin on Catechol-O-Methyltransferase." in: **Molecules (Basel, Switzerland)**, Vol. 22, Issue 8, (2018) ([PubMed](#)).

Images



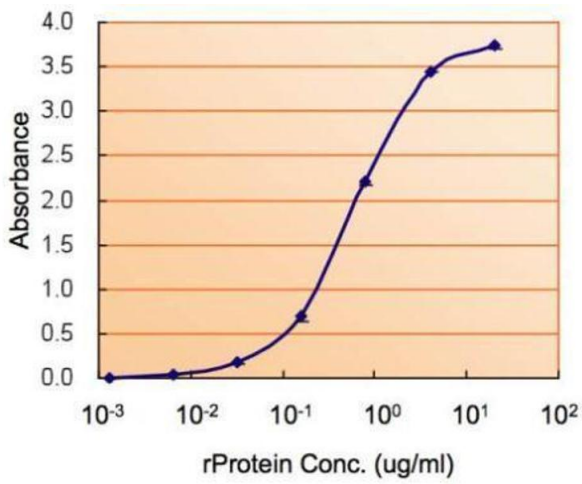
Immunohistochemistry

Image 1. IHC-P Image COMT antibody detects COMT protein at cytosol on human colon carcinoma by immunohistochemical analysis. Sample: Paraffin-embedded human colon carcinoma. COMT antibody, dilution: 1:250.



Western Blotting

Image 2. WB Image Sample (30 ug of whole cell lysate) A: Molt-4, 12% SDS PAGE antibody diluted at 1:1000



ELISA

Image 3. ELISA Image ELISA detection of COMT using for capture at a concentration of 2.5 µg/mL and for detection at a concentration of 0.5 µg/mL.

Please check the [product details page](#) for more images. Overall 4 images are available for ABIN2854980.