

Datasheet for ABIN2854981

anti-E2F1 antibody

4 Images

[Go to Product page](#)

Overview

Quantity:	100 µL
Target:	E2F1
Reactivity:	Human
Host:	Rabbit
Clonality:	Polyclonal
Conjugate:	This E2F1 antibody is un-conjugated
Application:	Western Blotting (WB), Immunofluorescence (IF), Immunoprecipitation (IP), Immunocytochemistry (ICC)

Product Details

Immunogen:	Recombinant protein encompassing a sequence within the center region of human E2F1. The exact sequence is proprietary.
Isotype:	IgG
Cross-Reactivity:	Human
Characteristics:	Rabbit Polyclonal antibody to E2F1 (E2F transcription factor 1) E2F1 antibody [N1N3]
Purification:	Purified by antigen-affinity chromatography.

Target Details

Target:	E2F1
Alternative Name:	E2F transcription factor 1 (E2F1 Products)

Target Details

Background: The protein encoded by this gene is a member of the E2F family of transcription factors. The E2F family plays a crucial role in the control of cell cycle and action of tumor suppressor proteins and is also a target of the transforming proteins of small DNA tumor viruses. The E2F proteins contain several evolutionally conserved domains found in most members of the family. These domains include a DNA binding domain, a dimerization domain which determines interaction with the differentiation regulated transcription factor proteins (DP), a transactivation domain enriched in acidic amino acids, and a tumor suppressor protein association domain which is embedded within the transactivation domain. This protein and another 2 members, E2F2 and E2F3, have an additional cyclin binding domain. This protein binds preferentially to retinoblastoma protein pRB in a cell-cycle dependent manner. It can mediate both cell proliferation and p53-dependent/independent apoptosis.

Cellular Localization: Nucleus

Molecular Weight: 47 kDa

Gene ID: 1869

UniProt: [Q01094](#)

Pathways: [p53 Signaling](#), [Cell Division Cycle](#), [Mitotic G1-G1/S Phases](#), [DNA Replication](#), [M Phase](#), [Autophagy](#)

Application Details

Application Notes: WB: 1:500-1:3000. ICC/IF: 1:100-1:1000. IP: 1:100-1:500. Optimal dilutions/concentrations should be determined by the researcher. Not tested in other applications.

Comment: Positive Control: E2F1-transfected 293T

Restrictions: For Research Use only

Handling

Format: Liquid

Concentration: 1 mg/mL

Buffer: 0.1M Tris-Glycine (pH 7), 10 % Glycerol, 0.01 % Thimerosal

Preservative: Thimerosal (Merthiolate)

Precaution of Use: This product contains Thimerosal (Merthiolate): a POISONOUS AND HAZARDOUS SUBSTANCE

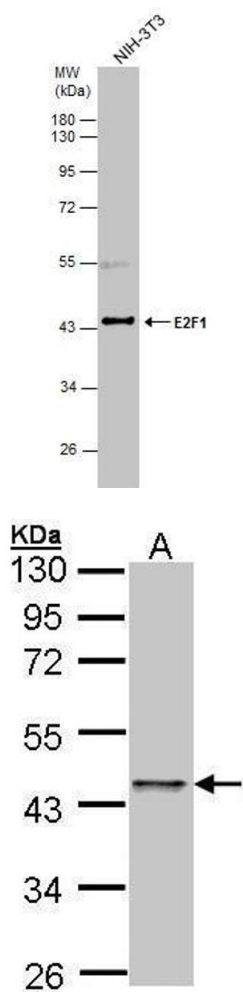
Handling

which should be handled by trained staff only.

Storage: 4 °C,-20 °C

Storage Comment: Store as concentrated solution. Centrifuge briefly prior to opening vial. For short-term storage (1-2 weeks), store at 4°C. For long-term storage, aliquot and store at -20°C or below. Avoid multiple freeze-thaw cycles.

Validation report #104339 for Multiplex Immunohistochemistry (mIHC)

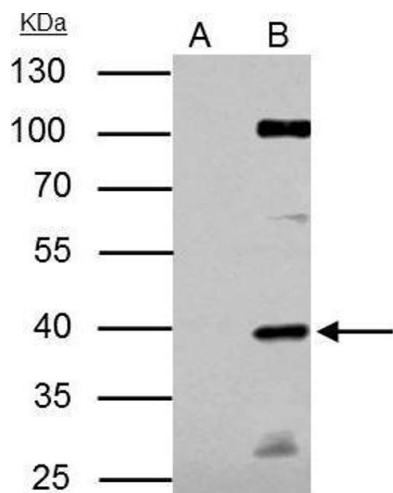


Western Blotting

Image 1. WB Image Whole cell extract (30 µg) was separated by 10% SDS-PAGE, and the membrane was blotted with E2F1 antibody , diluted at 1:3000.

Western Blotting

Image 2. WB Image Sample (30 ug of whole cell lysate) A: A431 , 10% SDS PAGE antibody diluted at 1:500



Immunoprecipitation						
Image	3.	IP	Image	E2F1	antibody	[N1N3]
immunoprecipitates E2F1 protein in IP experiments. IP samples: HeLa whole cell extract A. Control with 4 µg of preimmune Rabbit IgG B. Immunoprecipitation of E2F1 protein by 4 µg E2F1 antibody [N1N3] , 10 % SDS-PAGE The immunoprecipitated E2F1 protein was detected by E2F1 antibody [N1N3] , diluted at 1:500. [EasyBlot anti-rabbit IgG was used as a secondary reagent]						

Please check the [product details page](#) for more images. Overall 4 images are available for ABIN2854981.