



[Go to Product page](#)

Datasheet for ABIN2854985

anti-DLD antibody

5 Images

1 Publication

Overview

Quantity:	100 µL
Target:	DLD
Reactivity:	Human
Host:	Rabbit
Clonality:	Polyclonal
Conjugate:	This DLD antibody is un-conjugated
Application:	Western Blotting (WB), Immunofluorescence (IF), Immunohistochemistry (Paraffin-embedded Sections) (IHC (p)), Immunocytochemistry (ICC)

Product Details

Immunogen:	Recombinant protein encompassing a sequence within the center region of human DLD. The exact sequence is proprietary.
Isotype:	IgG
Cross-Reactivity:	Human, Mouse, Rat
Characteristics:	Rabbit Polyclonal antibody to DLD (dihydrolipoamide dehydrogenase) DLD antibody
Purification:	Affinity purified by Protein A.
Grade:	KO Validated

Target Details

Target:	DLD
---------	-----

Target Details

Alternative Name:	dihydrolipoamide dehydrogenase (DLD Products)
Background:	<p>This gene encodes the L protein of the mitochondrial glycine cleavage system. The L protein, also named dihydrolipoamide dehydrogenase, is also a component of the pyruvate dehydrogenase complex, the alpha-ketoglutarate dehydrogenase complex, and the branched-chain alpha-keto acid dehydrogenase complex. Mutations in this gene have been identified in patients with E3-deficient maple syrup urine disease and lipoamide dehydrogenase deficiency.</p> <p>Cellular Localization: Mitochondrion matrix</p>
Molecular Weight:	54 kDa
Gene ID:	1738
UniProt:	P09622
Pathways:	Ribonucleoside Biosynthetic Process , Cell Redox Homeostasis

Application Details

Application Notes:	WB: 1:500-1:3000. ICC/IF: 1:100-1:1000. IHC-P: 1:100-1:1000. Optimal dilutions/concentrations should be determined by the researcher. Not tested in other applications.
Comment:	Positive Control: Mouse brain , 293T , PC-12 , Rat2 , HeLa Validation: KO/KD
Restrictions:	For Research Use only

Handling

Format:	Liquid
Concentration:	1 mg/mL
Buffer:	1XPBS (pH 7), 20 % Glycerol, 0.01 % Thimerosal
Preservative:	Thimerosal (Merthiolate)
Precaution of Use:	This product contains Thimerosal (Merthiolate): a POISONOUS AND HAZARDOUS SUBSTANCE which should be handled by trained staff only.
Storage:	4 °C, -20 °C
Storage Comment:	Store as concentrated solution. Centrifuge briefly prior to opening vial. For short-term storage (1-2 weeks), store at 4°C. For long-term storage, aliquot and store at -20°C or below. Avoid

multiple freeze-thaw cycles.

Publications

Product cited in:

Chen, Lin, Chen, Cheng, Cheng, Imai et al.: "Effect of prednisolone on glyoxalase 1 in an inbred mouse model of aristolochic acid nephropathy using a proteomics method with fluorogenic derivatization-liquid chromatography-tandem mass ..." in: **PLoS ONE**, Vol. 15, Issue 1, pp. e0227838, (2020) ([PubMed](#)).

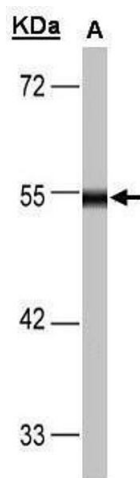
Dawson, Biggar, Storey: "Characterization of fructose-1,6-bisphosphate aldolase during anoxia in the tolerant turtle, *Trachemys scripta elegans*: an assessment of enzyme activity, expression and structure." in: **PLoS ONE**, Vol. 8, Issue 7, pp. e68830, (2014) ([PubMed](#)).

Images



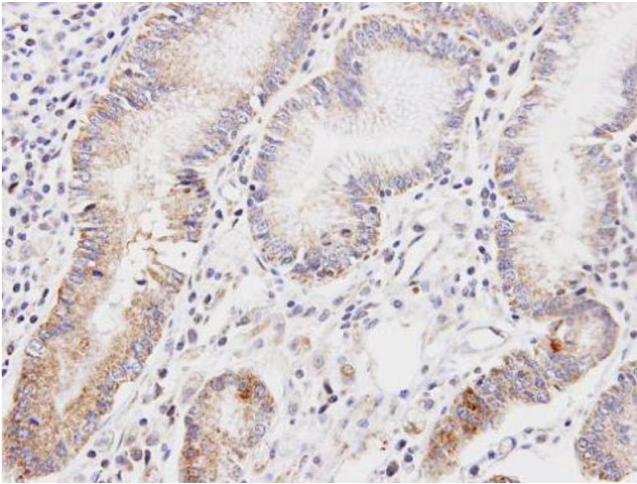
Immunofluorescence

Image 1. ICC/IF Image Immunofluorescence analysis of methanol-fixed Hep3B, using DLD, antibody at 1:100 dilution.



Western Blotting

Image 2. WB Image Sample(30 µg of whole cell lysate)
A:293T 10% SDS PAGE antibody diluted at 1:1000



Immunohistochemistry

Image 3. IHC-P Image Immunohistochemical analysis of paraffin-embedded human gastric cancer, using DLD, antibody at 1:100 dilution.

Please check the [product details page](#) for more images. Overall 5 images are available for ABIN2854985.