

Datasheet for ABIN2854996
anti-LCK antibody (C-Term)



[Go to Product page](#)

2 Images

Overview

Quantity:	100 µL
Target:	LCK
Binding Specificity:	C-Term
Reactivity:	Human, Mouse
Host:	Rabbit
Clonality:	Polyclonal
Conjugate:	This LCK antibody is un-conjugated
Application:	Western Blotting (WB)

Product Details

Immunogen:	Recombinant protein encompassing a sequence within the C-terminus region of human Lck. The exact sequence is proprietary.
Isotype:	IgG
Cross-Reactivity:	Pig (Porcine), Rat (Rattus), Zebrafish (Danio rerio), Cow (Bovine)
Cross-Reactivity (Details):	Pig (96 %), Rat (97 %), Zebrafish (85 %), Bovine (97 %)
Characteristics:	Rabbit polyclonal antibody to Lck (lymphocyte-specific protein tyrosine kinase) Lck antibody [C1C3]
Purification:	Purified by antigen-affinity chromatography.

Target Details

Target:	LCK
Alternative Name:	Lck (LCK Products)
Background:	<p>This gene is a member of the Src family of protein tyrosine kinases (PTKs). The encoded protein is a key signaling molecule in the selection and maturation of developing T-cells. It contains N-terminal sites for myristylation and palmytylation, a PTK domain, and SH2 and SH3 domains which are involved in mediating protein-protein interactions with phosphotyrosine-containing and proline-rich motifs, respectively. The protein localizes to the plasma membrane and pericentrosomal vesicles, and binds to cell surface receptors, including CD4 and CD8, and other signaling molecules. Multiple alternatively spliced variants, encoding the same protein, have been described.</p> <p>Cellular Localization: Cytoplasm , Cell membrane, Lipid-anchor, Cytoplasmic side</p>
Molecular Weight:	58 kDa
Gene ID:	3932
Pathways:	TCR Signaling , Fc-epsilon Receptor Signaling Pathway , EGFR Signaling Pathway , Neurotrophin Signaling Pathway , Transition Metal Ion Homeostasis , Positive Regulation of Endopeptidase Activity , CXCR4-mediated Signaling Events , Thromboxane A2 Receptor Signaling

Application Details

Application Notes:	<p>Suggested dilution Reference Western blot 1:500-1:3000* Not tested in other applications.</p> <p>*Optimal dilutions/concentrations should be determined by the researcher.Suggested dilutionReferenceWestern blot1:500-1:3000*</p>
Comment:	Positive Control: H1299 , NIH-3T3
Restrictions:	For Research Use only

Handling

Format:	Liquid
Concentration:	1 mg/mL
Buffer:	0.1M Tris, 0.1M Glycine, 10 % Glycerol (pH 7). 0.01 % Thimerosal was added as a preservative.
Preservative:	Thimerosal (Merthiolate)
Precaution of Use:	This product contains Thimerosal (Merthiolate): a POISONOUS AND HAZARDOUS SUBSTANCE

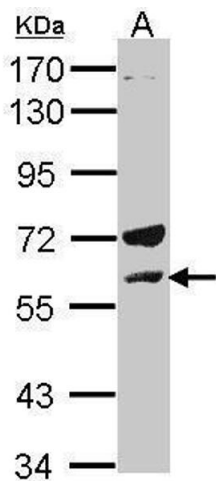
Handling

which should be handled by trained staff only.

Storage: -20 °C

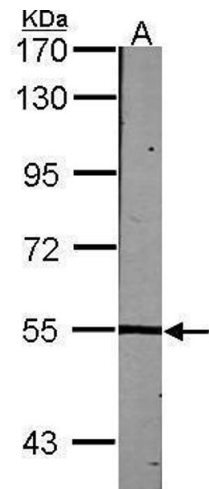
Storage Comment: Keep as concentrated solution. Aliquot and store at -20°C or below. Avoid multiple freeze-thaw cycles.

Images



Western Blotting

Image 1. WB Image Sample(30 µg of whole cell lysate)
A:H1299 7.5% SDS PAGE antibody diluted at 1:500



Western Blotting

Image 2. WB Image Sample (30 ug of whole cell lysate)
A:NIH-3T3 7.5% SDS PAGE antibody diluted at 1:1000