

Datasheet for ABIN2854998

anti-TUBB antibody

8 Images

4 Publications

[Go to Product page](#)

Overview

Quantity:	100 µL
Target:	TUBB
Reactivity:	Human
Host:	Rabbit
Clonality:	Polyclonal
Conjugate:	This TUBB antibody is un-conjugated
Application:	Western Blotting (WB), Immunofluorescence (IF), Immunohistochemistry (Paraffin-embedded Sections) (IHC (p)), Immunocytochemistry (ICC), Immunohistochemistry (Whole Mount) (IHC (wm))

Product Details

Immunogen:	Recombinant protein encompassing a sequence within the center region of human beta Tubulin. The exact sequence is proprietary.
Isotype:	IgG
Cross-Reactivity:	Hamster, Human, Mouse, Rat, Zebrafish (Danio rerio)
Characteristics:	Rabbit Polyclonal antibody to beta Tubulin (tubulin, beta) beta Tubulin antibody
Purification:	Purified by antigen-affinity chromatography.

Target Details

Target:	TUBB
---------	------

Target Details

Alternative Name:	beta Tubulin (TUBB Products)
Gene ID:	203068
Pathways:	Microtubule Dynamics , M Phase

Application Details

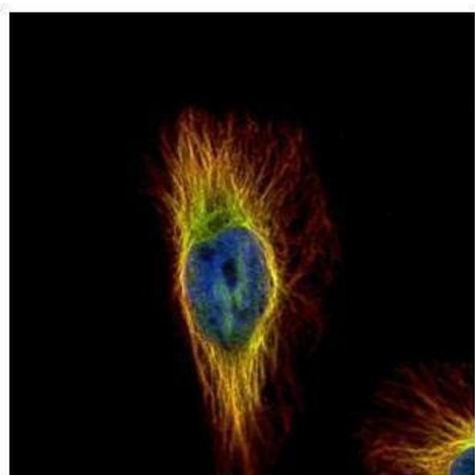
Application Notes:	WB: 1:500-1:20000. ICC/IF: 1:100-1:1000. IHC-P: 1:100-1:1000. Optimal dilutions/concentrations should be determined by the researcher. Not tested in other applications.
Comment:	Positive Control: NIH-3T3 , 293T , A431 , HeLa , HepG2 , A549 , H1299 , HCT116 Validation: Orthogonal
Restrictions:	For Research Use only

Handling

Format:	Liquid
Concentration:	2.44 mg/mL
Buffer:	1XPBS (pH 7), 20 % Glycerol, 0.025 % ProClin 300
Preservative:	ProClin
Precaution of Use:	This product contains ProClin: a POISONOUS AND HAZARDOUS SUBSTANCE which should be handled by trained staff only.
Storage:	4 °C, -20 °C
Storage Comment:	Store as concentrated solution. Centrifuge briefly prior to opening vial. For short-term storage (1-2 weeks), store at 4°C. For long-term storage, aliquot and store at -20°C or below. Avoid multiple freeze-thaw cycles.

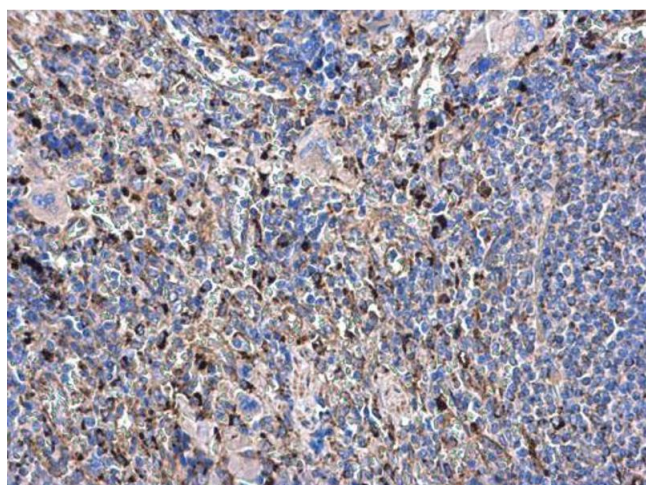
Publications

Product cited in:	Sarin, Engel, Rothweiler, Cinatl, Michaelis, Frötschl, Fröhlich, Kalayda: "Key Players of Cisplatin Resistance: Towards a Systems Pharmacology Approach." in: International journal of molecular sciences , Vol. 19, Issue 3, (2018) (PubMed).
-------------------	---



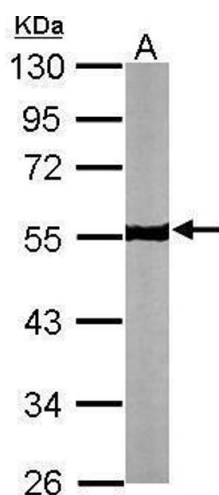
Immunofluorescence

Image 1. ICC/IF Image Confocal immunofluorescence analysis (Olympus FV10i) of paraformaldehyde-fixed HeLa, using beta Tubulin, antibody (Green) at 1:500 dilution. Alpha-tubulin filaments were labeled with (Red) at 1:2000.



Immunohistochemistry

Image 2. IHC-P Image beta Tubulin antibody detects beta Tubulin protein at cytoplasm in rat spleen by immunohistochemical analysis. Sample: Paraffin-embedded rat spleen. beta Tubulin antibody, diluted at 1:500.



Western Blotting

Image 3. WB Image Sample (30 ug of whole cell lysate) A: NIH-3T3 10% SDS PAGE antibody diluted at 1:5000

Please check the [product details page](#) for more images. Overall 8 images are available for ABIN2854998.