

Datasheet for ABIN2855000
anti-MEF2A antibody (C-Term)

5 Images

[Go to Product page](#)

Overview

Quantity:	100 µL
Target:	MEF2A
Binding Specificity:	C-Term
Reactivity:	Human
Host:	Rabbit
Clonality:	Polyclonal
Conjugate:	This MEF2A antibody is un-conjugated
Application:	Western Blotting (WB), Immunofluorescence (IF), Immunohistochemistry (Paraffin-embedded Sections) (IHC (p)), Immunocytochemistry (ICC)

Product Details

Immunogen:	Recombinant protein encompassing a sequence within the C-terminus region of human MEF2A. The exact sequence is proprietary.
Isotype:	IgG
Cross-Reactivity:	Human, Mouse, Rat
Characteristics:	Rabbit Polyclonal antibody to MEF2A (myocyte enhancer factor 2A) MEF2A antibody [C2C3], C-term
Purification:	Purified by antigen-affinity chromatography.

Target Details

Target:	MEF2A
---------	-------

Target Details

Alternative Name:	myocyte enhancer factor 2A (MEF2A Products)
Background:	<p>The process of differentiation from mesodermal precursor cells to myoblasts has led to the discovery of a variety of tissue-specific factors that regulate muscle gene expression. The myogenic basic helix-loop-helix proteins, including myoD (MIM 159970), myogenin (MIM 159980), MYF5 (MIM 159990), and MRF4 (MIM 159991) are one class of identified factors. A second family of DNA binding regulatory proteins is the myocyte-specific enhancer factor-2 (MEF2) family. Each of these proteins binds to the MEF2 target DNA sequence present in the regulatory regions of many, if not all, muscle-specific genes. The MEF2 genes are members of the MADS gene family (named for the yeast mating type-specific transcription factor MCM1, the plant homeotic genes 'agamous' and 'deficiens' and the human serum response factor SRF (MIM 600589)), a family that also includes several homeotic genes and other transcription factors, all of which share a conserved DNA-binding domain.[supplied by OMIM]</p> <p>Cellular Localization: Nucleus</p>
Molecular Weight:	55 kDa
Gene ID:	4205
UniProt:	Q02078
Pathways:	Neurotrophin Signaling Pathway , Activation of Innate immune Response , Carbohydrate Homeostasis , Chromatin Binding , Regulation of Muscle Cell Differentiation , Toll-Like Receptors Cascades

Application Details

Application Notes:	WB: 1:500-1:3000. ICC/IF: 1:100-1:1000. IHC-P: 1:100-1:1000. Optimal dilutions/concentrations should be determined by the researcher. Not tested in other applications.
Comment:	Positive Control: H1299 , PC-12 , Rat-2
Restrictions:	For Research Use only

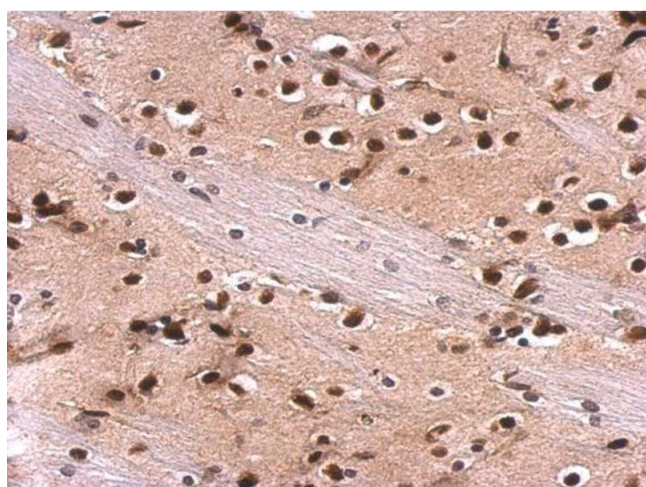
Handling

Format:	Liquid
Concentration:	1 mg/mL
Buffer:	0.1M Tris-Glycine (pH 7), 10 % Glycerol, 0.01 % Thimerosal

Handling

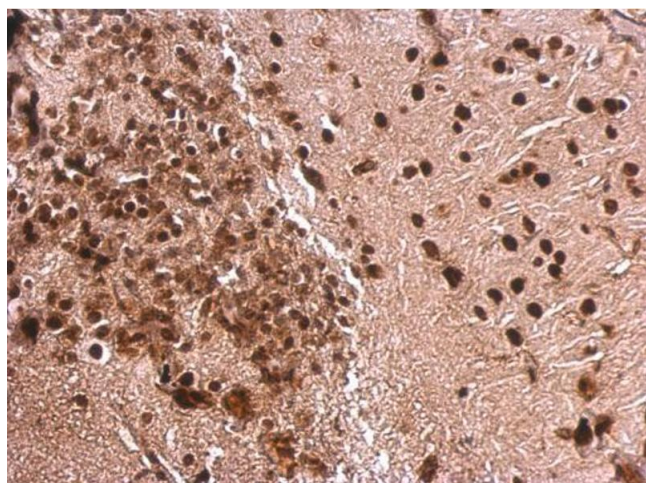
Preservative:	Thimerosal (Merthiolate)
Precaution of Use:	This product contains Thimerosal (Merthiolate): a POISONOUS AND HAZARDOUS SUBSTANCE which should be handled by trained staff only.
Storage:	4 °C,-20 °C
Storage Comment:	Store as concentrated solution. Centrifuge briefly prior to opening vial. For short-term storage (1-2 weeks), store at 4°C. For long-term storage, aliquot and store at -20°C or below. Avoid multiple freeze-thaw cycles.

Images



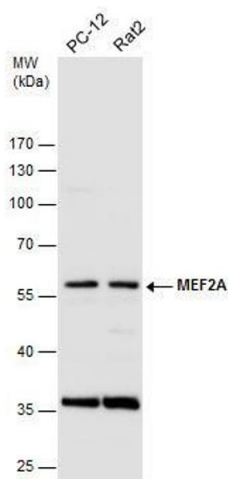
Immunohistochemistry

Image 1. IHC-P Image MEF2A antibody [C2C3], C-term detects MEF2A protein at nucleus on rat fore brain by immunohistochemical analysis. Sample: Paraffin-embedded rat fore brain. MEF2A antibody [C2C3], C-term , dilution: 1:500.



Immunohistochemistry

Image 2. IHC-P Image MEF2A antibody [C2C3], C-term detects MEF2A protein at nucleus on mouse fore brain by immunohistochemical analysis. Sample: Paraffin-embedded mouse fore brain. MEF2A antibody [C2C3], C-term , dilution: 1:500.



Western Blotting

Image 3. WB Image Various whole cell extracts (30 µg) were separated by 10% SDS-PAGE, and the membrane was blotted with MEF2A antibody [C2C3], C-term , diluted at 1:500.

Please check the [product details page](#) for more images. Overall 5 images are available for ABIN2855000.