

Datasheet for ABIN2855003
anti-BLM antibody (C-Term)[Go to Product page](#)

4 Images

Overview

Quantity:	100 µL
Target:	BLM
Binding Specificity:	C-Term
Reactivity:	Human, Mouse
Host:	Rabbit
Clonality:	Polyclonal
Conjugate:	This BLM antibody is un-conjugated
Application:	Western Blotting (WB), Immunofluorescence (IF), Immunohistochemistry (Paraffin-embedded Sections) (IHC (p)), Immunocytochemistry (ICC)

Product Details

Immunogen:	Recombinant protein encompassing a sequence within the C-terminus region of human BLM. The exact sequence is proprietary.
Isotype:	IgG
Characteristics:	Rabbit Polyclonal antibody to BLM (Bloom syndrome, RecQ helicase-like) BLM antibody [C3], C-term
Purification:	Purified by antigen-affinity chromatography.

Target Details

Target:	BLM
Alternative Name:	BLM (BLM Products)

Target Details

Background: The Bloom syndrome gene product is related to the RecQ subset of DExH box-containing DNA helicases and has both DNA-stimulated ATPase and ATP-dependent DNA helicase activities. Mutations causing Bloom syndrome delete or alter helicase motifs and may disable the 3'-5' helicase activity. The normal protein may act to suppress inappropriate recombination.

Cellular Localization: Nucleus

Molecular Weight: 159 kDa

Gene ID: 641

Pathways: [DNA Damage Repair](#)

Application Details

Application Notes: Suggested dilution Reference ICC/IF 1:100-1:1000* IHC (Formalin-fixed paraffin-embedded sections) 1:100-1:1000* Western blot 1:500-1:3000* Not tested in other applications. *Optimal dilutions/concentrations should be determined by the researcher. Suggested dilution Reference ICC/IF 1:100-1:1000* IHC (Formalin-fixed paraffin-embedded sections) 1:100-1:1000* Western blot 1:500-1:3000*

Comment: Positive Control: Jurkat , Raji , K562 , NCI-H929 , NIH-3T3 , JC , BCL-1

Restrictions: For Research Use only

Handling

Format: Liquid

Concentration: 0.35 mg/mL

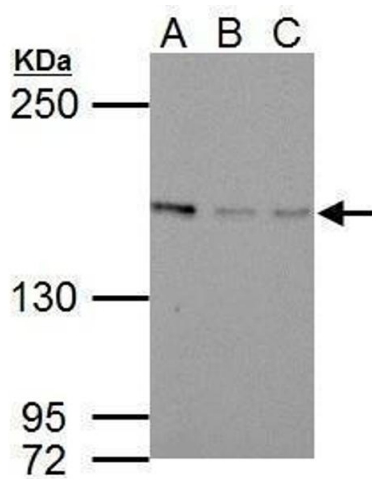
Buffer: 0.1M Tris, 0.1M Glycine, 10 % Glycerol (pH 7). 0.01 % Thimerosal was added as a preservative.

Preservative: Thimerosal (Merthiolate)

Precaution of Use: This product contains Thimerosal (Merthiolate): a POISONOUS AND HAZARDOUS SUBSTANCE which should be handled by trained staff only.

Storage: -20 °C

Storage Comment: Keep as concentrated solution. Aliquot and store at -20°C or below. Avoid multiple freeze-thaw cycles.

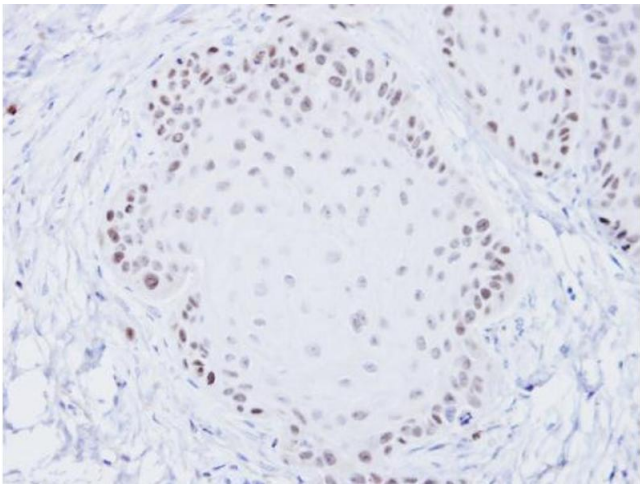


Western Blotting

Image 1. WB Image Sample (30 ug of whole cell lysate)

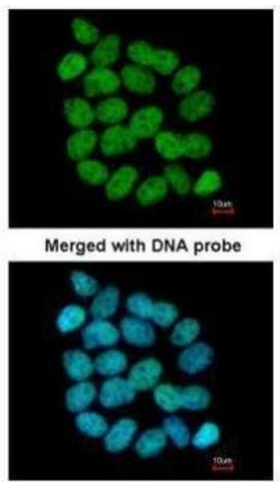
A: NIH-3T3 B: JC C: BCL-1 5% SDS PAGE

antibody diluted at 1:1000



Immunohistochemistry

Image 2. IHC-P Image Immunohistochemical analysis of paraffin-embedded Cal27 xenograft, using BLM, antibody at 1:100 dilution.



Immunofluorescence

Image 3. ICC/IF Image Immunofluorescence analysis of paraformaldehyde-fixed A431, using Bloom syndrome protein, antibody at 1:200 dilution.

Please check the [product details page](#) for more images. Overall 4 images are available for ABIN2855003.