

Datasheet for ABIN2855004
anti-Butyrylcholinesterase antibody

2 Images

[Go to Product page](#)

Overview

Quantity:	100 µL
Target:	Butyrylcholinesterase (BCHE)
Reactivity:	Human
Host:	Rabbit
Clonality:	Polyclonal
Conjugate:	This Butyrylcholinesterase antibody is un-conjugated
Application:	Western Blotting (WB), Immunohistochemistry (Paraffin-embedded Sections) (IHC (p))

Product Details

Immunogen:	Recombinant protein encompassing a sequence within the center region of human BCHE. The exact sequence is proprietary.
Isotype:	IgG
Cross-Reactivity:	Human
Characteristics:	Rabbit Polyclonal antibody to BCHE (butyrylcholinesterase) BCHE antibody [N1N3]
Purification:	Purified by antigen-affinity chromatography.

Target Details

Target:	Butyrylcholinesterase (BCHE)
Alternative Name:	butyrylcholinesterase (BCHE Products)

Target Details

Background: Mutant alleles at the BCHE locus are responsible for suxamethonium sensitivity. Homozygous persons sustain prolonged apnea after administration of the muscle relaxant suxamethonium in connection with surgical anesthesia. The activity of pseudocholinesterase in the serum is low and its substrate behavior is atypical. In the absence of the relaxant, the homozygote is at no known disadvantage.

Molecular Weight: 68 kDa

Gene ID: 590

UniProt: [P06276](#)

Pathways: [Peptide Hormone Metabolism](#)

Application Details

Application Notes: WB: 1:500-1:10000. IHC-P: 1:100-1:1000. Optimal dilutions/concentrations should be determined by the researcher. Not tested in other applications.

Comment: Positive Control: Jurkat , Raji , human BCHE-transfected 293T

Restrictions: For Research Use only

Handling

Format: Liquid

Concentration: 0.27 mg/mL

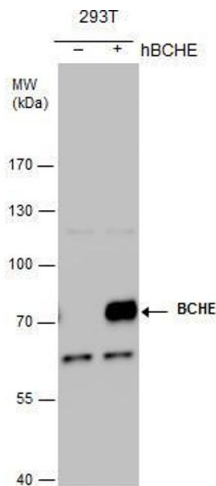
Buffer: 1XPBS (pH 7), 1 % BSA, 20 % Glycerol, 0.025 % ProClin 300

Preservative: ProClin

Precaution of Use: This product contains ProClin: a POISONOUS AND HAZARDOUS SUBSTANCE which should be handled by trained staff only.

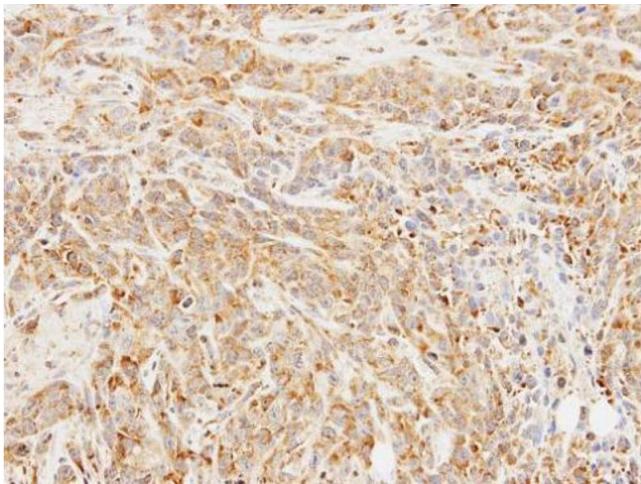
Storage: 4 °C, -20 °C

Storage Comment: Store as concentrated solution. Centrifuge briefly prior to opening vial. For short-term storage (1-2 weeks), store at 4°C. For long-term storage, aliquot and store at -20°C or below. Avoid multiple freeze-thaw cycles.



Western Blotting

Image 1. WB Image BCHE antibody detects BCHE protein by western blot analysis. Non-transfected (-) and BCHE-transfected (+) 293T whole cell extracts (30 µg) were separated by 7.5% SDS-PAGE, and the membrane was blotted with BCHE antibody, at a dilution of 1:1000.



Immunohistochemistry

Image 2. IHC-P Image Immunohistochemical analysis of paraffin-embedded SAS xenograft, using BCHE, antibody at 1:100 dilution.