

Datasheet for ABIN2855005
anti-ATRX antibody (C-Term)[Go to Product page](#)

7 Images

Overview

Quantity:	100 µL
Target:	ATRX
Binding Specificity:	C-Term
Reactivity:	Human, Mouse
Host:	Rabbit
Clonality:	Polyclonal
Conjugate:	This ATRX antibody is un-conjugated
Application:	Western Blotting (WB), Immunofluorescence (IF), Immunohistochemistry (Paraffin-embedded Sections) (IHC (p)), Immunocytochemistry (ICC), Immunoprecipitation (IP)

Product Details

Immunogen:	Recombinant protein encompassing a sequence within the C-terminus region of human ATRX. The exact sequence is proprietary.
Isotype:	IgG
Cross-Reactivity:	Chimpanzee
Cross-Reactivity (Details):	Chimpanzee (100 %)
Characteristics:	Rabbit Polyclonal antibody to ATRX (alpha thalassemia/mental retardation syndrome X-linked (RAD54 homolog, S. cerevisiae)) ATRX antibody [C3], C-term
Purification:	Purified by antigen-affinity chromatography.

Target Details

Target:	ATRX
Alternative Name:	ATRX (ATRX Products)
Background:	<p>The protein encoded by this gene contains an ATPase/helicase domain, and thus it belongs to the SWI/SNF family of chromatin remodeling proteins. The mutations of this gene are associated with an X-linked mental retardation (XLMR) syndrome most often accompanied by alpha-thalassemia (ATRX) syndrome. These mutations have been shown to cause diverse changes in the pattern of DNA methylation, which may provide a link between chromatin remodeling, DNA methylation, and gene expression in developmental processes. This protein is found to undergo cell cycle-dependent phosphorylation, which regulates its nuclear matrix and chromatin association, and suggests its involvement in the gene regulation at interphase and chromosomal segregation in mitosis. Multiple alternatively spliced transcript variants encoding distinct isoforms have been reported.</p>
Molecular Weight:	283 kDa
Gene ID:	546

Application Details

Application Notes:	<p>Suggested dilution Reference ICC/IF 1:100-1:1000* IHC (Formalin-fixed paraffin-embedded sections) 1:100-1:1000* Immunoprecipitation 1:100-1:500* Western blot 1:500-1:3000* Not tested in other applications. *Optimal dilutions/concentrations should be determined by the researcher.Suggested dilutionReferenceICC/IF1:100-1:1000* IHC (Formalin-fixed paraffin-embedded sections)1:100-1:1000* Immunoprecipitation1:100-1:500* Western blot1:500-1:3000*</p>
Comment:	Positive Control: 293T , A431 , HeLa , HepG2 , NIH3T3
Restrictions:	For Research Use only

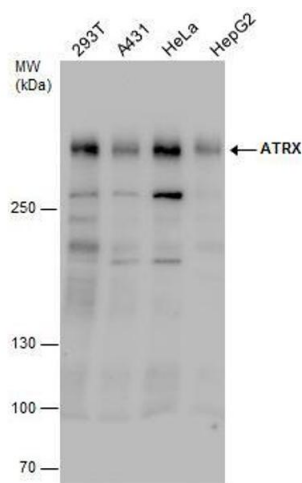
Handling

Format:	Liquid
Concentration:	2.67 mg/mL
Buffer:	1XPBS, 20 % Glycerol (pH 7). 0.025 % ProClin 300 was added as a preservative.
Preservative:	ProClin

Handling

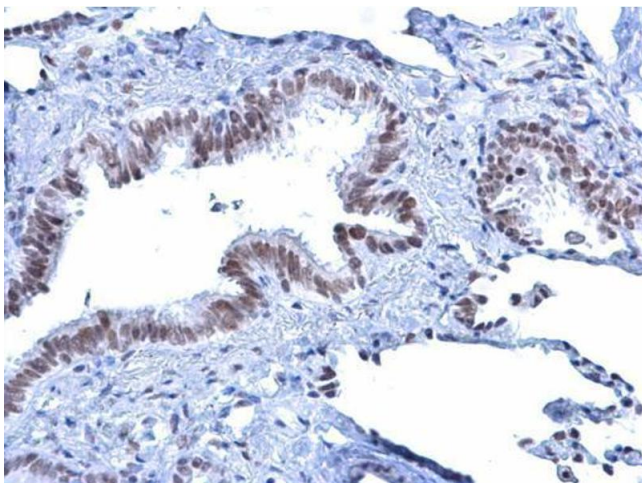
Precaution of Use:	This product contains ProClin: a POISONOUS AND HAZARDOUS SUBSTANCE which should be handled by trained staff only.
Storage:	-20 °C
Storage Comment:	Keep as concentrated solution. Aliquot and store at -20°C or below. Avoid multiple freeze-thaw cycles.

Images



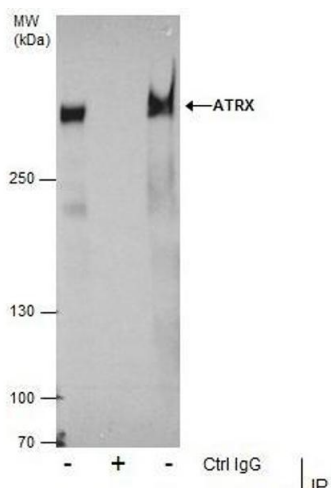
Western Blotting

Image 1. WB Image ATRX antibody detects ATRX protein by western blot analysis. Various whole cell extracts (30 µg) were separated by 5% SDS-PAGE, and the membrane was blotted with ATRX antibody, diluted by 1:1000.



Immunohistochemistry

Image 2. IHC-P Image Rad54 antibody [C3], C-term detects Rad54 protein at nucleus on human lung carcinoma by immunohistochemical analysis. Sample: Paraffin-embedded human lung carcinoma. Rad54 antibody [C3], C-term, dilution: 1:500.



Immunoprecipitation

Image 3. IP Image Immunoprecipitation of ATRX protein from 293T whole cell extracts using 5 µg of ATRX antibody [C3], C-term, Western blot analysis was performed using ATRX antibody [C3], C-term, EasyBlot anti-Rabbit IgG was used as a secondary reagent.

Please check the [product details page](#) for more images. Overall 7 images are available for ABIN2855005.