

Datasheet for ABIN2855012  
**anti-BCL6 antibody (Internal Region)**

## 5 Images

[Go to Product page](#)

## Overview

Quantity:	100 µL
Target:	BCL6
Binding Specificity:	Internal Region
Reactivity:	Human, Mouse
Host:	Rabbit
Clonality:	Polyclonal
Conjugate:	This BCL6 antibody is un-conjugated
Application:	Western Blotting (WB), Immunohistochemistry (Paraffin-embedded Sections) (IHC (p)), Immunoprecipitation (IP), Chromatin Immunoprecipitation (ChIP)

## Product Details

Immunogen:	Recombinant protein encompassing a sequence within the center region of human BCL6. The exact sequence is proprietary.
Isotype:	IgG
Characteristics:	Rabbit Polyclonal antibody to BCL6 (B-cell CLL/lymphoma 6) BCL6 antibody [N2C1], Internal
Purification:	Purified by antigen-affinity chromatography.

## Target Details

Target:	BCL6
Alternative Name:	BCL6 ( <a href="#">BCL6 Products</a> )

## Target Details

**Background:** The protein encoded by this gene is a zinc finger transcription factor and contains an N-terminal POZ domain. This protein acts as a sequence-specific repressor of transcription, and has been shown to modulate the transcription of START-dependent IL-4 responses of B cells. This protein can interact with a variety of POZ-containing proteins that function as transcription corepressors. This gene is found to be frequently translocated and hypermutated in diffuse large-cell lymphoma (DLCL), and may be involved in the pathogenesis of DLCL. Alternatively spliced transcript variants encoding different protein isoforms have been found for this gene.

Cellular Localization: Nucleus

**Molecular Weight:** 79 kDa

**Gene ID:** 604

**Pathways:** [Chromatin Binding](#), [Regulation of Leukocyte Mediated Immunity](#), [Production of Molecular Mediator of Immune Response](#), [Protein targeting to Nucleus](#)

## Application Details

**Application Notes:** Suggested dilution Reference ChIP assay Assay-dependent dilution IHC (Formalin-fixed paraffin-embedded sections) 1:100-1:1000\* Immunoprecipitation 1:100-1:500\* Western blot 1:500-1:3000\* Not tested in other applications. \*Optimal dilutions/concentrations should be determined by the researcher. Suggested dilution Reference ChIP assay Assay-dependent dilution IHC (Formalin-fixed paraffin-embedded sections) 1:100-1:1000\* Immunoprecipitation 1:100-1:500\* Western blot 1:500-1:3000\*

**Comment:** Positive Control: Jurkat , Raji , NCI-H929 , Neuro2A , GL261 , C8D30 , NIH-3T3 , Raw264.7 , C2C12

**Restrictions:** For Research Use only

## Handling

**Format:** Liquid

**Concentration:** 1 mg/mL

**Buffer:** 1XPBS, 1 % BSA, 20 % Glycerol ( pH 7). 0.01 % Thimerosal was added as a preservative.

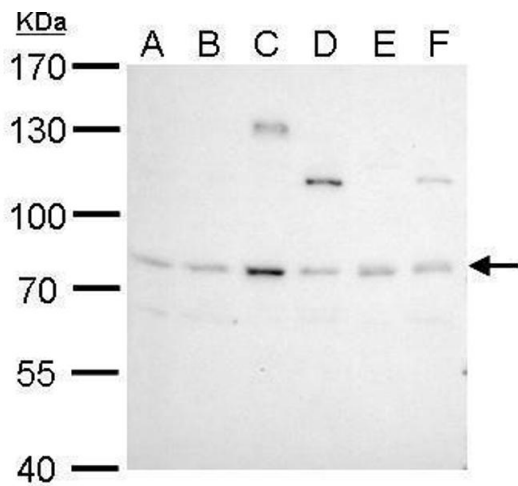
**Preservative:** Thimerosal (Merthiolate)

**Precaution of Use:** This product contains Thimerosal (Merthiolate): a POISONOUS AND HAZARDOUS SUBSTANCE which should be handled by trained staff only.

Handling

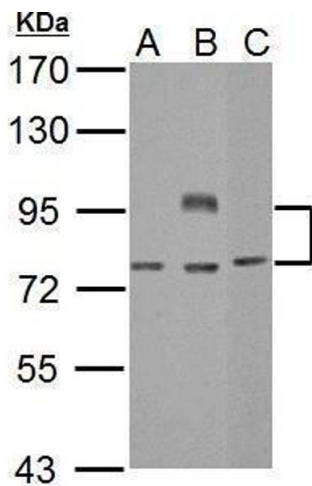
Storage:	-20 °C
Storage Comment:	Keep as concentrated solution. Aliquot and store at -20°C or below. Avoid multiple freeze-thaw cycles.

Validation report #104252 for Cleavage Under Targets and Release Using Nuclease (CUT&RUN)



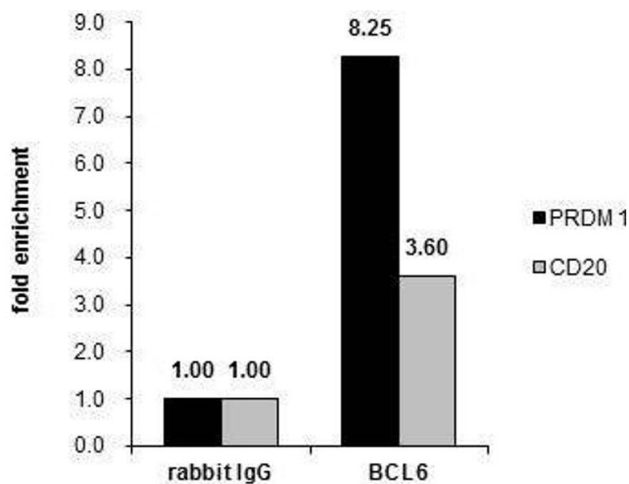
**Western Blotting**

**Image 1.** WB Image BCL6 antibody [N2C1], Internal detects BCL6 protein by Western blot analysis. A. 30 µg Neuro2A whole cell lysate/extract B. 30 µg GL261 whole cell lysate/extract C. 30 µg C8D30 whole cell lysate/extract D. 30 µg NIH-3T3 whole cell lysate/extract E. 30 µg Raw264.7 whole cell lysate/extract F. 30 µg C2C12 whole cell lysate/extract 7.5 % SDS-PAGE BCL6 antibody [N2C1], Internal , dilution: 1:1000



**Western Blotting**

**Image 2.** WB Image Sample (30 ug of whole cell lysate) A: Jurkat B: Raji C: NCI-H929 7.5% SDS PAGE antibody diluted at 1:1000



**Chromatin Immunoprecipitation**

**Image 3.** ChIP Image Cross-linked ChIP was performed with Raji chromatin extract and 5 µg of either control rabbit IgG or anti-BCL6 antibody. The precipitated DNA was detected by PCR with primer set targeting to PRDM1 or CD20.

Please check the [product details page](#) for more images. Overall 5 images are available for ABIN2855012.