

Datasheet for ABIN2855014

anti-ASS1 antibody**2** Images[Go to Product page](#)

Overview

Quantity:	100 µL
Target:	ASS1
Reactivity:	Human
Host:	Rabbit
Clonality:	Polyclonal
Conjugate:	This ASS1 antibody is un-conjugated
Application:	Western Blotting (WB), Immunohistochemistry (Paraffin-embedded Sections) (IHC (p))

Product Details

Immunogen:	Recombinant protein encompassing a sequence within the center region of human ASS1. The exact sequence is proprietary.
Isotype:	IgG
Cross-Reactivity:	Human
Characteristics:	Rabbit Polyclonal antibody to ASS1 (argininosuccinate synthase 1) ASS1 antibody
Purification:	Purified by antigen-affinity chromatography.

Target Details

Target:	ASS1
Alternative Name:	argininosuccinate synthase 1 (ASS1 Products)

Target Details

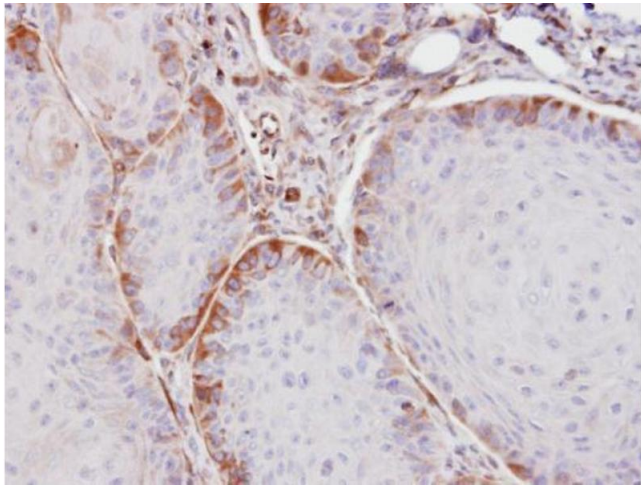
Background:	The protein encoded by this gene catalyzes the penultimate step of the arginine biosynthetic pathway. There are approximately 10 to 14 copies of this gene including the pseudogenes scattered across the human genome, among which the one located on chromosome 9 appears to be the only functional gene for argininosuccinate synthetase. Mutations in the chromosome 9 copy of ASS cause citrullinemia. Two transcript variants encoding the same protein have been found for this gene.
Molecular Weight:	47 kDa
Gene ID:	445
UniProt:	P00966
Pathways:	Response to Growth Hormone Stimulus , Cellular Response to Molecule of Bacterial Origin

Application Details

Application Notes:	WB: 1:500-1:3000. IHC-P: 1:100-1:1000. Optimal dilutions/concentrations should be determined by the researcher. Not tested in other applications.
Comment:	Positive Control: A431
Restrictions:	For Research Use only

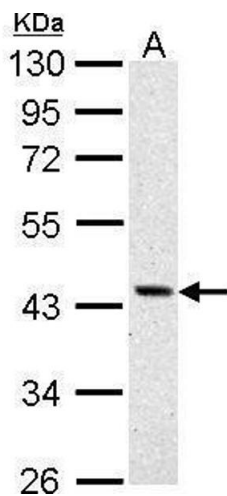
Handling

Format:	Liquid
Concentration:	0.27 mg/mL
Buffer:	0.1M Tris-Glycine (pH 7), 10 % Glycerol, 0.01 % Thimerosal
Preservative:	Thimerosal (Merthiolate)
Precaution of Use:	This product contains Thimerosal (Merthiolate): a POISONOUS AND HAZARDOUS SUBSTANCE which should be handled by trained staff only.
Storage:	4 °C,-20 °C
Storage Comment:	Store as concentrated solution. Centrifuge briefly prior to opening vial. For short-term storage (1-2 weeks), store at 4°C. For long-term storage, aliquot and store at -20°C or below. Avoid multiple freeze-thaw cycles.



Immunohistochemistry

Image 1. IHC-P Image Immunohistochemical analysis of paraffin-embedded Cal27 xenograft, using ASS1, antibody at 1:100 dilution.



Western Blotting

Image 2. WB Image ASS1 antibody detects ASS1 protein by Western blot analysis. A. 30 µg A431 whole cell lysate/extract 10 % SDS-PAGE ASS1 antibody , dilution: 1:1000