

Datasheet for ABIN2855017  
**anti-CCT7 antibody (C-Term)**[Go to Product page](#)

## 1 Image

## Overview

Quantity:	100 µL
Target:	CCT7
Binding Specificity:	C-Term
Reactivity:	Human
Host:	Rabbit
Clonality:	Polyclonal
Conjugate:	This CCT7 antibody is un-conjugated
Application:	Western Blotting (WB)

## Product Details

Immunogen:	Recombinant protein encompassing a sequence within the C-terminus region of human TCP1 eta. The exact sequence is proprietary.
Isotype:	IgG
Cross-Reactivity:	Human
Characteristics:	Rabbit Polyclonal antibody to TCP1 eta (chaperonin containing TCP1, subunit 7 (eta)) TCP1 eta antibody [C1C3]
Purification:	Purified by antigen-affinity chromatography.

## Target Details

Target:	CCT7
---------	------

## Target Details

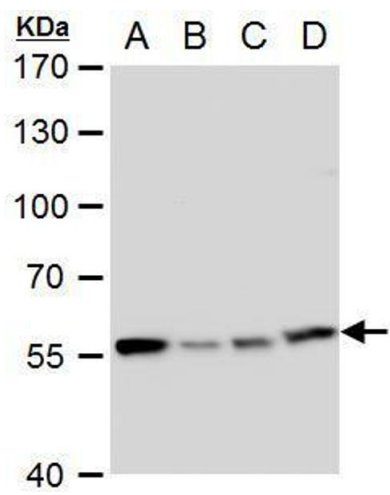
Alternative Name:	chaperonin containing TCP1 subunit 7 ( <a href="#">CCT7 Products</a> )
Background:	This gene encodes a molecular chaperone that is a member of the chaperonin containing TCP1 complex (CCT), also known as the TCP1 ring complex (TRiC). This complex consists of two identical stacked rings, each containing eight different proteins. Unfolded polypeptides enter the central cavity of the complex and are folded in an ATP-dependent manner. The complex folds various proteins, including actin and tubulin. Alternate transcriptional splice variants encoding different isoforms have been found for this gene, but only two of them have been characterized to date.
Molecular Weight:	59 kDa
Gene ID:	10574
UniProt:	<a href="#">Q99832</a>

## Application Details

Application Notes:	WB: 1:500-1:3000. Optimal dilutions/concentrations should be determined by the researcher. Not tested in other applications.
Restrictions:	For Research Use only

## Handling

Format:	Liquid
Concentration:	0.44 mg/mL
Buffer:	1XPBS ( pH 7), 1 % BSA, 20 % Glycerol, 0.01 % Thimerosal
Preservative:	Thimerosal (Merthiolate)
Precaution of Use:	This product contains Thimerosal (Merthiolate): a POISONOUS AND HAZARDOUS SUBSTANCE which should be handled by trained staff only.
Storage:	4 °C,-20 °C
Storage Comment:	Store as concentrated solution. Centrifuge briefly prior to opening vial. For short-term storage (1-2 weeks), store at 4°C. For long-term storage, aliquot and store at -20°C or below. Avoid multiple freeze-thaw cycles.



Western Blotting

**Image 1.** WB Image TCP1 eta antibody [C1C3] detects TCP1 eta protein by western blot analysis. A. 30 µg 293T whole cell extract B. 30 µg A431 whole cell extract C. 30 µg HeLa whole cell extract D. 30 µg HepG2 whole cell extract 7.5 % SDS-PAGE TCP1 eta antibody [C1C3] , dilution: 1:1000